



MLS 6457836 Lake Land

\$20,000

Description:

Welcome to Todd County !! This lakeshore lot is located on Little Pine Lake. Build your own lake home on this affordable lake lot in Sylvan Shores. Open to the builder of your choice. You will be able to enjoy all the amenities the association provides; pool, community center, camp ground, club house and access to other lakes within the Sylvan Shores Association. Local fishing and public hunting land nearby are huge pluses. Little Pine Lake itself is 25 acres in size and 6 feet deep. Escape the noise and commotion of the big cities!! The Sylvan Shores Community is located just over 2 hours from the Twin Cities. Come check out this affordable lake lot.

Additional Details:

Lot Acres	0.48
Lot Dimensions	130x205
School District	2170
Taxes	\$140
Taxes with Assessments	\$140
Tax Year	2025

Additional Features:

Driving Directions:

from Browerville, turn E on 6th St E continue onto Co Rd 16, left on 62 continue straight on co Rd 79, turn R on 400th St. then a R on Osage Dr. GPS users can use the neighbors house 39817 Osage for the cabin to the east



Listed By:
Timber Ghost Realty, LLC

Affinity Real Estate Inc. participates in the Regional Multiple Listing Service of Minnesota, Inc Broker Reciprocity (sm) program, allowing us to display other broker's listings on our website. All properties are subject to prior sale, change or withdrawal.



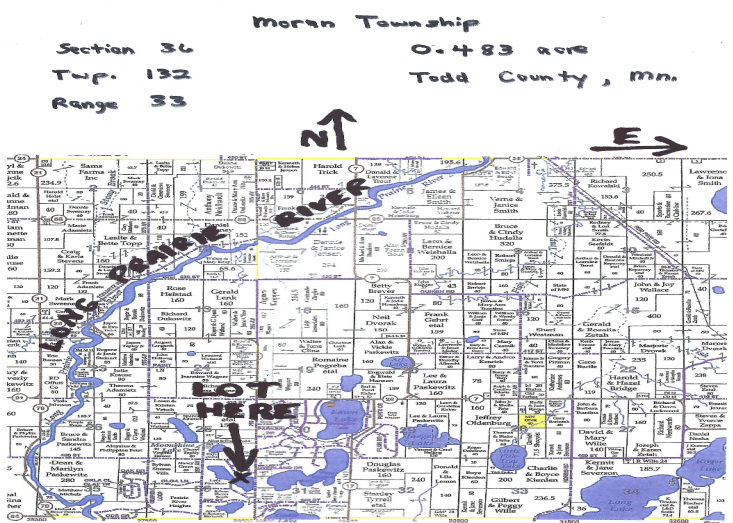
Call Affinity Real Estate

218-237-3333

info@affinityrealestate.com



Affinity Real Estate - 600 Park Avenue South - Park Rapids MN 56470



website: www.AffinityRealEstate.com | email: info@affinityrealestate.com | office: 218-237-3333 | fax: 218-237-3377

Affinity
REAL ESTATE INC

\$20,000
MLS 6457836 Lake Land
39xxx Osage Drive
Browerville MN 56438



website: www.AffinityRealEstate.com | email: info@affinityrealestate.com | office: 218-237-3333 | fax: 218-237-3377



\$20,000
 MLS 6457836 Lake Land
 39xxx Osage Drive
 Browerville MN 56438



website: www.AffinityRealEstate.com | email: info@affinityrealestate.com | office: 218-237-3333 | fax: 218-237-3377



\$20,000
 MLS 6457836 Lake Land
 39xxx Osage Drive
 Browerville MN 56438



website: www.AffinityRealEstate.com | email: info@affinityrealestate.com | office: 218-237-3333 | fax: 218-237-3377



\$20,000
 MLS 6457836 Lake Land
 39xxx Osage Drive
 Browerville MN 56438



website: www.AffinityRealEstate.com | email: info@affinityrealestate.com | office: 218-237-3333 | fax: 218-237-3377

Affinity
REAL ESTATE INC

\$20,000
MLS 6457836 Lake Land
39xxx Osage Drive
Browerville MN 56438



website: www.AffinityRealEstate.com | email: info@affinityrealestate.com | office: 218-237-3333 | fax: 218-237-3377



\$20,000
MLS 6457836 Lake Land
39xxx Osage Drive
Browerville MN 56438