



MLS 6458277 Residential

**\$359,000**

1,425 sq ft  
2 bedrooms  
2 baths

1615 30th Street  
Bemidji MN 56601

Status: Canceled

**Description:**

Beautiful townhome located in North Ridge Cottages, Home features open floor plan with two bdrm two baths and a sunroom, many features such as stainless appliances, gas range, Boiler Radiant floor heat, kinetico water softener that is a dechlorinator. added amenities include a community room which also features exercise equipment. Home has been smoke and pet free, Heated double car garage, a great community close to medical, shopping and much more.

**Additional Details:**

Year Built	2021
Lot Acres	0.01
Lot Dimensions	43x46
Garage Stalls	2
School District	31
Taxes	\$181
Taxes with Assessments	\$181
Tax Year	2023

**Additional Features:**

**Basement:** None **Fuel:** Natural Gas **Garage:** 2 **Heat:** Ductless Mini-Split, Radiant Floor **Sewer:** City Sewer/Connected **Water:** City Water/Connected **Air Conditioning:** Ductless Mini-Split

**Driving Directions:**

N on Irvine to 30th left to North ridge cottages on the right



Listed By:  
RE/MAX Bemidji

Affinity Real Estate Inc. participates in the Regional Multiple Listing Service of Minnesota, Inc Broker Reciprocity (sm) program, allowing us to display other broker's listings on our website. All properties are subject to prior sale, change or withdrawal.



**Call Affinity Real Estate**

**218-237-3333**

**info@affinityrealestate.com**



**Affinity Real Estate - 600 Park Avenue South - Park Rapids MN 56470**



website: [www.AffinityRealEstate.com](http://www.AffinityRealEstate.com) | email: [info@affinityrealestate.com](mailto:info@affinityrealestate.com) | office: 218-237-3333 | fax: 218-237-3377

**Affinity**  
REAL ESTATE INC

**\$359,000**  
MLS 6458277 Residential  
1615 30th Street  
Bemidji MN 56601



website: [www.AffinityRealEstate.com](http://www.AffinityRealEstate.com) | email: [info@affinityrealestate.com](mailto:info@affinityrealestate.com) | office: 218-237-3333 | fax: 218-237-3377

**Affinity**  
REAL ESTATE INC

**\$359,000**  
MLS 6458277 Residential  
1615 30th Street  
Bemidji MN 56601



website: [www.AffinityRealEstate.com](http://www.AffinityRealEstate.com) | email: [info@affinityrealestate.com](mailto:info@affinityrealestate.com) | office: 218-237-3333 | fax: 218-237-3377

**Affinity**  
REAL ESTATE INC

**\$359,000**  
MLS 6458277 Residential  
1615 30th Street  
Bemidji MN 56601



website: [www.AffinityRealEstate.com](http://www.AffinityRealEstate.com) | email: [info@affinityrealestate.com](mailto:info@affinityrealestate.com) | office: 218-237-3333 | fax: 218-237-3377

**Affinity**  
REAL ESTATE INC

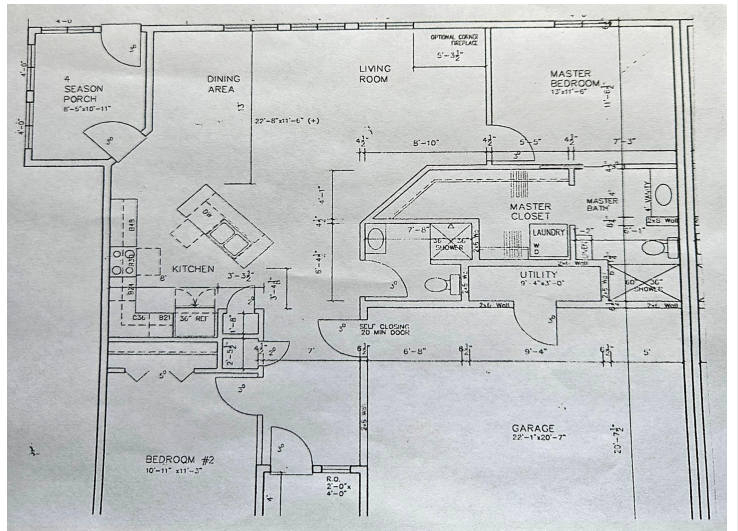
**\$359,000**  
MLS 6458277 Residential  
1615 30th Street  
Bemidji MN 56601



website: [www.AffinityRealEstate.com](http://www.AffinityRealEstate.com) | email: [info@affinityrealestate.com](mailto:info@affinityrealestate.com) | office: 218-237-3333 | fax: 218-237-3377



**\$359,000**  
 MLS 6458277 Residential  
 1615 30th Street  
 Bemidji MN 56601



website: [www.AffinityRealEstate.com](http://www.AffinityRealEstate.com) | email: [info@affinityrealestate.com](mailto:info@affinityrealestate.com) | office: 218-237-3333 | fax: 218-237-3377

**Affinity**  
REAL ESTATE INC

**\$359,000**  
MLS 6458277 Residential  
1615 30th Street  
Bemidji MN 56601



website: [www.AffinityRealEstate.com](http://www.AffinityRealEstate.com) | email: [info@affinityrealestate.com](mailto:info@affinityrealestate.com) | office: 218-237-3333 | fax: 218-237-3377



**\$359,000**  
 MLS 6458277 Residential  
 1615 30th Street  
 Bemidji MN 56601



website: [www.AffinityRealEstate.com](http://www.AffinityRealEstate.com) | email: [info@affinityrealestate.com](mailto:info@affinityrealestate.com) | office: 218-237-3333 | fax:218-237-3377



**\$359,000**  
MLS 6458277 Residential  
1615 30th Street  
Bemidji MN 56601