



MLS 6458461 Residential

\$339,500

2,240 sq ft
3 bedrooms
2 baths

15851 Conifer Circle
Park Rapids MN 56470

Status: Expired

Description:

Beautiful home in an excellent location approx. 2 miles from town. Home is exceptionally well maintained and updated. All bedrooms are larger than normal and upper level has the open concept feeling. Convenient deck just off the dining room for great grilling opportunities. Attached double garage and a detached 28' x 48' shop. Home is situated on a large, wooded 2.5 acre lot.

Additional Details:

Year Built	1992
Lot Acres	2.5
Lot Dimensions	295x375
Garage Stalls	2
School District	309
Taxes	\$1,350
Taxes with Assessments	\$1,550
Tax Year	2023

Additional Features:

Fuel: Propane **Heat:** Baseboard, Boiler, Ductless Mini-Split

Driving Directions:

From Hwys. 71/34 in Park Rapids. East on Hwy 34 to a right on Cty Rd 6. Follow approx. 2 miles to Conifer Circle on your right. Follow to property on your right. #15851



Listed By:
Coldwell Banker Crown Realtors

Affinity Real Estate Inc. participates in the Regional Multiple Listing Service of Minnesota, Inc Broker Reciprocity (sm) program, allowing us to display other broker's listings on our website. All properties are subject to prior sale, change or withdrawal.



Call Affinity Real Estate

218-237-3333

info@affinityrealestate.com



Affinity Real Estate - 600 Park Avenue South - Park Rapids MN 56470



website: www.AffinityRealEstate.com | email: info@affinityrealestate.com | office: 218-237-3333 | fax: 218-237-3377



\$339,500
 MLS 6458461 Residential
 15851 Conifer Circle
 Park Rapids MN 56470



website: www.AffinityRealEstate.com | email: info@affinityrealestate.com | office: 218-237-3333 | fax: 218-237-3377

Affinity
REAL ESTATE INC

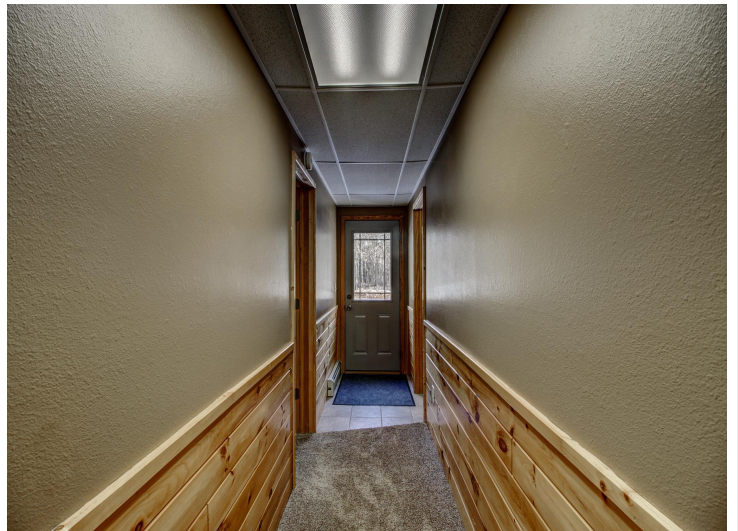
\$339,500
MLS 6458461 Residential
15851 Conifer Circle
Park Rapids MN 56470



website: www.AffinityRealEstate.com | email: info@affinityrealestate.com | office: 218-237-3333 | fax: 218-237-3377



\$339,500
 MLS 6458461 Residential
 15851 Conifer Circle
 Park Rapids MN 56470



website: www.AffinityRealEstate.com | email: info@affinityrealestate.com | office: 218-237-3333 | fax: 218-237-3377



\$339,500
MLS 6458461 Residential
15851 Conifer Circle
Park Rapids MN 56470



website: www.AffinityRealEstate.com | email: info@affinityrealestate.com | office: 218-237-3333 | fax: 218-237-3377



\$339,500
 MLS 6458461 Residential
 15851 Conifer Circle
 Park Rapids MN 56470



website: www.AffinityRealEstate.com | email: info@affinityrealestate.com | office: 218-237-3333 | fax: 218-237-3377



\$339,500
 MLS 6458461 Residential
 15851 Conifer Circle
 Park Rapids MN 56470

