



MLS 6458660 Lake Land

**\$109,900**

**Description:**

Set on 6.84 acres with 209' of natural shoreline, this lot offers a peaceful setting with a nice building site and wonderful tree cover. Complete with dock slip in the Grey Goose Association.

**Additional Details:**

Lot Acres	6.84
Lot Dimensions	209x734xirr
School District	309
Taxes	\$338
Taxes with Assessments	\$338
Tax Year	2023

**Additional Features:**

**Driving Directions:**

From 34/71 in Park Rapids, North on 71 to a right on 230th St. Follow to a left on 141st Ave to Gazelle Trail to property.



Listed By:  
Wolff & Simon Real Estate

Affinity Real Estate Inc. participates in the Regional Multiple Listing Service of Minnesota, Inc Broker Reciprocity (sm) program, allowing us to display other broker's listings on our website. All properties are subject to prior sale, change or withdrawal.



**Call Affinity Real Estate**

**218-237-3333**

**info@affinityrealestate.com**



**Affinity Real Estate - 600 Park Avenue South - Park Rapids MN 56470**



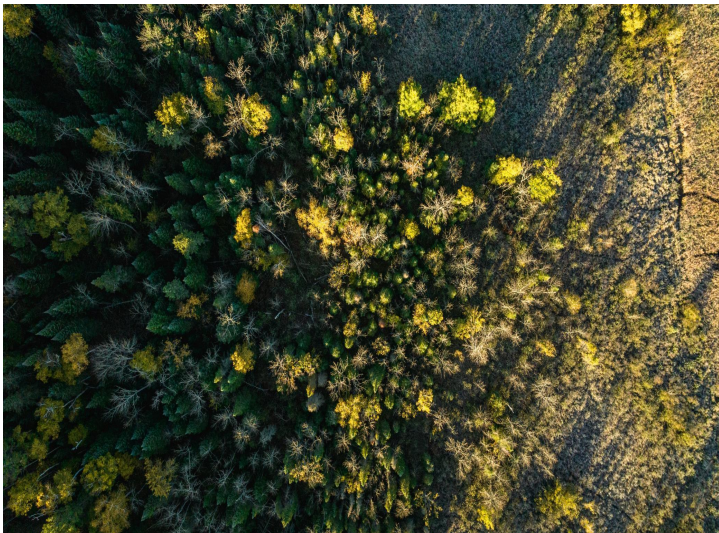


website: [www.AffinityRealEstate.com](http://www.AffinityRealEstate.com) | email: [info@affinityrealestate.com](mailto:info@affinityrealestate.com) | office: 218-237-3333 | fax:218-237-3377



**\$109,900**  
MLS 6458660 Lake Land  
13895 Gazelle Trail  
Park Rapids MN 56470





website: [www.AffinityRealEstate.com](http://www.AffinityRealEstate.com) | email: [info@affinityrealestate.com](mailto:info@affinityrealestate.com) | office: 218-237-3333 | fax:218-237-3377



**\$109,900**  
MLS 6458660 Lake Land  
13895 Gazelle Trail  
Park Rapids MN 56470