



MLS 6459404 Residential

\$175,000

1,124 sq ft
2 bedrooms
1 baths

2245 State 84
Pine River MN 56474

Status: Closed

Description:

BACK ON MARKET!!! Move-in condition is this 2 bedroom, 1 bath home on a large corner 1.55-acre corner lot in the outskirts Pine River. Home features main floor updated laundry room with new washer and dryer 2023, spacious kitchen w/ updated appliances, informal dining, large living room, spacious bedrooms and full bath. Property has over sized two car detached garage and 18x31 pole shed. Partially fenced in back yard for extra privacy. 2020 New Septic installed. All complete with a home warranty! BACK ON MARKET Due to the buyer's financing falling through, satisfactory FHA appraisal and water test are complete.

Additional Details:

Year Built	1979
Lot Acres	1.55
Lot Dimensions	330x205
Garage Stalls	4
School District	2174
Taxes	\$604
Taxes with Assessments	\$670
Tax Year	2023

Additional Features:

Basement: Sump Pump, Unfinished **Fuel:** Natural Gas **Garage:** 4 **Heat:** Forced Air **Sewer:** Mound Septic, Septic System Compliant - Yes
Water: Sand Point, Well **Air Conditioning:** Window Unit(s)

Driving Directions:

HWY 371 N to Stoplight East on Barclay to Left at T onto State 84 SW, follow to property on Left



Listed By:
Edina Realty, Inc.

Affinity Real Estate Inc. participates in the Regional Multiple Listing Service of Minnesota, Inc Broker Reciprocity (sm) program, allowing us to display other broker's listings on our website. All properties are subject to prior sale, change or withdrawal.



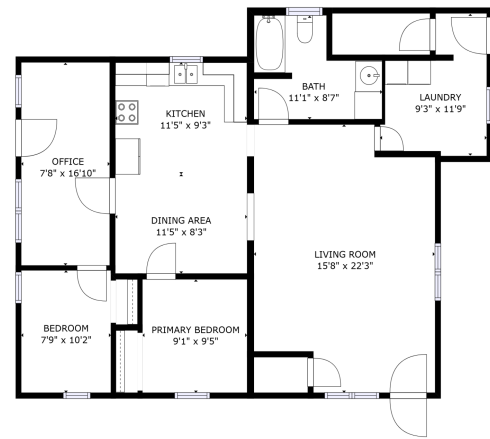
Call Affinity Real Estate

218-237-3333

info@affinityrealestate.com



Affinity Real Estate - 600 Park Avenue South - Park Rapids MN 56470



FLOOR 1
GROSS INTERNAL AREA
FLOOR 1: 1,100 sq. ft.
TOTAL: 1,100 sq. ft.
SIZES AND DIMENSIONS ARE APPROXIMATE, ACTUAL MAY VARY

Matterport



website: www.AffinityRealEstate.com | email: info@affinityrealestate.com | office: 218-237-3333 | fax: 218-237-3377

Affinity
REAL ESTATE INC

\$175,000
MLS 6459404 Residential
2245 State 84
Pine River MN 56474



website: www.AffinityRealEstate.com | email: info@affinityrealestate.com | office: 218-237-3333 | fax: 218-237-3377

Affinity
REAL ESTATE INC

\$175,000
MLS 6459404 Residential
2245 State 84
Pine River MN 56474



website: www.AffinityRealEstate.com | email: info@affinityrealestate.com | office: 218-237-3333 | fax: 218-237-3377

Affinity
REAL ESTATE INC

\$175,000
MLS 6459404 Residential
2245 State 84
Pine River MN 56474



website: www.AffinityRealEstate.com | email: info@affinityrealestate.com | office: 218-237-3333 | fax: 218-237-3377

Affinity
REAL ESTATE INC

\$175,000
MLS 6459404 Residential
2245 State 84
Pine River MN 56474



website: www.AffinityRealEstate.com | email: info@affinityrealestate.com | office: 218-237-3333 | fax: 218-237-3377



\$175,000
 MLS 6459404 Residential
 2245 State 84
 Pine River MN 56474



website: www.AffinityRealEstate.com | email: info@affinityrealestate.com | office: 218-237-3333 | fax: 218-237-3377



\$175,000
 MLS 6459404 Residential
 2245 State 84
 Pine River MN 56474