



MLS 6459414 Residential

**\$152,000**

1,135 sq ft  
3 bedrooms  
1 baths

2011 3rd Street  
Bemidji MN 56601

Status: Hold

**Description:**

Looking for the country feel yet close to town to access all its amenities? This is what you are looking for! This property has just over 4 acres on the edge of town. Walking distance to the Sanford Center and Northwest Technical College. This property was part of the original farmstead on this side of town. 3 bedrooms 1 bathroom. Unique features including some of the original hardwood floors. Possibility to turn the upstairs into 2 separate bedrooms. Endless opportunities to make this into your cute cozy home! Property is being sold as is

**Additional Details:**

Year Built	1920
Lot Acres	4.38
Lot Dimensions	172.51x295x315.9x285.77x483.14x583.4
	9
Garage Stalls	1
School District	31
Taxes	\$880
Taxes with Assessments	\$880
Tax Year	2023

**Additional Features:**

**Basement:** Other **Fuel:** Natural Gas **Garage:** 1 **Heat:** Forced Air **Sewer:** Tank with Drainage Field **Water:** Well **Air Conditioning:** None

**Driving Directions:**

Turn onto First st se from Paul Bunyan Drive. Turn right on Lake Ave SE. Take a left on Third St SE and the home the third house on the left.



Listed By:  
Northland Sotheby's International Realty

Affinity Real Estate Inc. participates in the Regional Multiple Listing Service of Minnesota, Inc Broker Reciprocity (sm) program, allowing us to display other broker's listings on our website. All properties are subject to prior sale, change or withdrawal.



**Call Affinity Real Estate**

**218-237-3333**

**info@affinityrealestate.com**



**Affinity Real Estate - 600 Park Avenue South - Park Rapids MN 56470**



website: [www.AffinityRealEstate.com](http://www.AffinityRealEstate.com) | email: [info@affinityrealestate.com](mailto:info@affinityrealestate.com) | office: 218-237-3333 | fax: 218-237-3377

**Affinity**  
REAL ESTATE INC

**\$152,000**  
MLS 6459414 Residential  
2011 3rd Street  
Bemidji MN 56601



website: [www.AffinityRealEstate.com](http://www.AffinityRealEstate.com) | email: [info@affinityrealestate.com](mailto:info@affinityrealestate.com) | office: 218-237-3333 | fax: 218-237-3377

**Affinity**  
REAL ESTATE INC

**\$152,000**  
MLS 6459414 Residential  
2011 3rd Street  
Bemidji MN 56601



website: [www.AffinityRealEstate.com](http://www.AffinityRealEstate.com) | email: [info@affinityrealestate.com](mailto:info@affinityrealestate.com) | office: 218-237-3333 | fax: 218-237-3377

**Affinity**  
REAL ESTATE INC

**\$152,000**  
MLS 6459414 Residential  
2011 3rd Street  
Bemidji MN 56601



website: [www.AffinityRealEstate.com](http://www.AffinityRealEstate.com) | email: [info@affinityrealestate.com](mailto:info@affinityrealestate.com) | office: 218-237-3333 | fax:218-237-3377

**Affinity**  
REAL ESTATE INC

**\$152,000**  
MLS 6459414 Residential  
2011 3rd Street  
Bemidji MN 56601



website: [www.AffinityRealEstate.com](http://www.AffinityRealEstate.com) | email: [info@affinityrealestate.com](mailto:info@affinityrealestate.com) | office: 218-237-3333 | fax:218-237-3377



**\$152,000**  
MLS 6459414 Residential  
2011 3rd Street  
Bemidji MN 56601



website: [www.AffinityRealEstate.com](http://www.AffinityRealEstate.com) | email: [info@affinityrealestate.com](mailto:info@affinityrealestate.com) | office: 218-237-3333 | fax:218-237-3377



**\$152,000**  
MLS 6459414 Residential  
2011 3rd Street  
Bemidji MN 56601

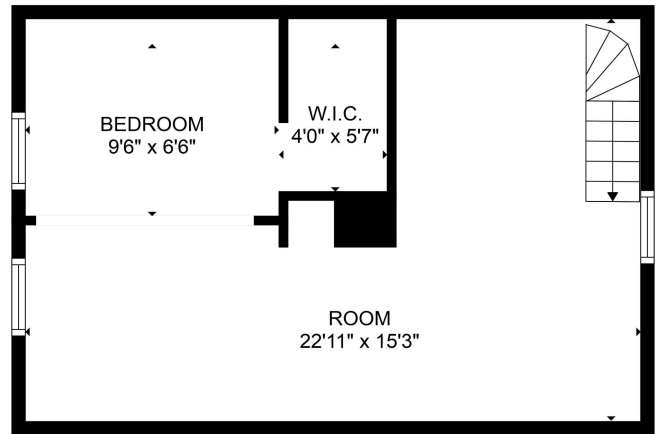


website: [www.AffinityRealEstate.com](http://www.AffinityRealEstate.com) | email: [info@affinityrealestate.com](mailto:info@affinityrealestate.com) | office: 218-237-3333 | fax:218-237-3377

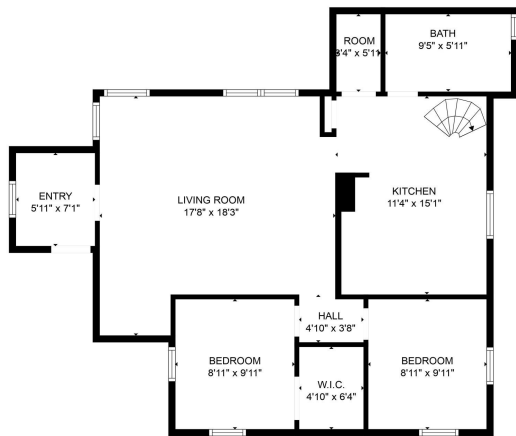


**\$152,000**  
MLS 6459414 Residential  
2011 3rd Street  
Bemidji MN 56601

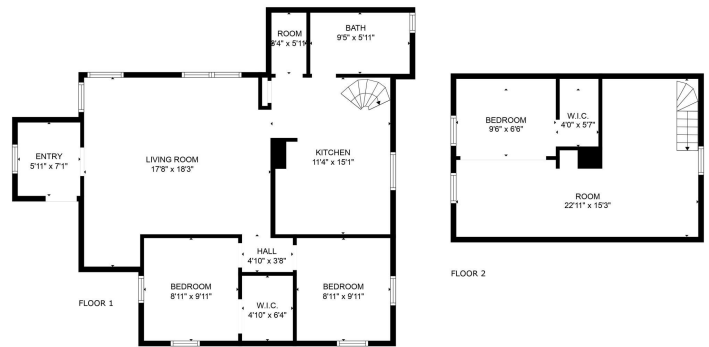




GROSS INTERNAL AREA  
 Below Ground: 804 sq. ft., FLOOR 2: 331 sq. ft.  
 EXCLUDED AREAS: ROOM: 20 sq. ft., LOW CEILING: 20 sq. ft.  
 TOTAL: 1135 sq. ft.  
 MEASUREMENTS ARE CALCULATED BY COURTESY TECHNOLOGY. FIGURES VARY SLIGHTLY BUT NOT GUARANTEED.



GROSS INTERNAL AREA  
 Below Ground: 804 sq. ft., FLOOR 2: 331 sq. ft.  
 EXCLUDED AREAS: ROOM: 20 sq. ft., LOW CEILING: 20 sq. ft.  
 TOTAL: 1135 sq. ft.  
 MEASUREMENTS ARE CALCULATED BY COURTESY TECHNOLOGY. FIGURES VARY SLIGHTLY BUT NOT GUARANTEED.



GROSS INTERNAL AREA  
 Below Ground: 804 sq. ft., FLOOR 2: 331 sq. ft.  
 EXCLUDED AREAS: ROOM: 20 sq. ft., LOW CEILING: 20 sq. ft.  
 TOTAL: 1135 sq. ft.  
 MEASUREMENTS ARE CALCULATED BY COURTESY TECHNOLOGY. FIGURES VARY SLIGHTLY BUT NOT GUARANTEED.

website: [www.AffinityRealEstate.com](http://www.AffinityRealEstate.com) | email: [info@affinityrealestate.com](mailto:info@affinityrealestate.com) | office: 218-237-3333 | fax: 218-237-3377



**\$152,000**  
 MLS 6459414 Residential  
 2011 3rd Street  
 Bemidji MN 56601