



MLS 6460537 Residential

\$219,900

1,738 sq ft
4 bedrooms
2 baths

2701 Irvine Avenue
Bemidji MN 56601

Status: Hold

Description:

Welcome to the heart of Bemidji! This charming Home on a corner lot boasts a large two-stall garage, fenced back yard, and great curb appeal. Inside, enjoy modern updates like stainless steel appliances, a newer natural gas boiler, and stylish baths and kitchen. Vintage touches include beautiful hardwood floors and natural woodwork throughout. With spacious rooms, ample storage, and a prime location, this gem seamlessly blends convenience with character. Embrace the lifestyle you deserve in this meticulously crafted Home that captures the essence of modern living with a touch of classic elegance. Welcome Home!

Additional Details:

Year Built	1910
Lot Acres	0.17
Lot Dimensions	55x130
Garage Stalls	2
School District	31
Taxes	\$2,944
Taxes with Assessments	\$2,944
Tax Year	2023

Additional Features:

Basement: Full **Fuel:** Natural Gas **Garage:** 2 **Heat:** Boiler **Sewer:** City Sewer/Connected **Water:** City Water/Connected **Air Conditioning:** Window Unit(s)

Driving Directions:

From downtown Bemidji, follow Irvine Ave N to address.



Listed By:
RE/MAX Bemidji

Affinity Real Estate Inc. participates in the Regional Multiple Listing Service of Minnesota, Inc Broker Reciprocity (sm) program, allowing us to display other broker's listings on our website. All properties are subject to prior sale, change or withdrawal.



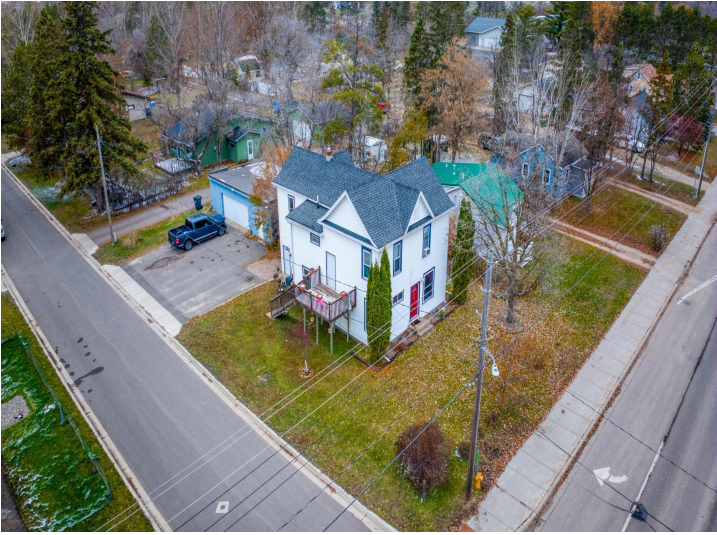
Call Affinity Real Estate

218-237-3333

info@affinityrealestate.com



Affinity Real Estate - 600 Park Avenue South - Park Rapids MN 56470



website: www.AffinityRealEstate.com | email: info@affinityrealestate.com | office: 218-237-3333 | fax:218-237-3377

Affinity
REAL ESTATE INC

\$219,900
MLS 6460537 Residential
2701 Irvine Avenue
Bemidji MN 56601



website: www.AffinityRealEstate.com | email: info@affinityrealestate.com | office: 218-237-3333 | fax:218-237-3377

Affinity
REAL ESTATE INC

\$219,900
MLS 6460537 Residential
2701 Irvine Avenue
Bemidji MN 56601



website: www.AffinityRealEstate.com | email: info@affinityrealestate.com | office: 218-237-3333 | fax:218-237-3377



\$219,900
MLS 6460537 Residential
2701 Irvine Avenue
Bemidji MN 56601



website: www.AffinityRealEstate.com | email: info@affinityrealestate.com | office: 218-237-3333 | fax:218-237-3377

Affinity
REAL ESTATE INC

\$219,900
MLS 6460537 Residential
2701 Irvine Avenue
Bemidji MN 56601



website: www.AffinityRealEstate.com | email: info@affinityrealestate.com | office: 218-237-3333 | fax: 218-237-3377

Affinity
REAL ESTATE INC

\$219,900
MLS 6460537 Residential
2701 Irvine Avenue
Bemidji MN 56601



website: www.AffinityRealEstate.com | email: info@affinityrealestate.com | office: 218-237-3333 | fax:218-237-3377

Affinity
REAL ESTATE INC

\$219,900
MLS 6460537 Residential
2701 Irvine Avenue
Bemidji MN 56601



website: www.AffinityRealEstate.com | email: info@affinityrealestate.com | office: 218-237-3333 | fax:218-237-3377



\$219,900
MLS 6460537 Residential
2701 Irvine Avenue
Bemidji MN 56601



website: www.AffinityRealEstate.com | email: info@affinityrealestate.com | office: 218-237-3333 | fax:218-237-3377

Affinity
REAL ESTATE INC

\$219,900
MLS 6460537 Residential
2701 Irvine Avenue
Bemidji MN 56601



website: www.AffinityRealEstate.com | email: info@affinityrealestate.com | office: 218-237-3333 | fax: 218-237-3377

Affinity
REAL ESTATE INC

\$219,900
MLS 6460537 Residential
2701 Irvine Avenue
Bemidji MN 56601



website: www.AffinityRealEstate.com | email: info@affinityrealestate.com | office: 218-237-3333 | fax: 218-237-3377

Affinity
REAL ESTATE INC

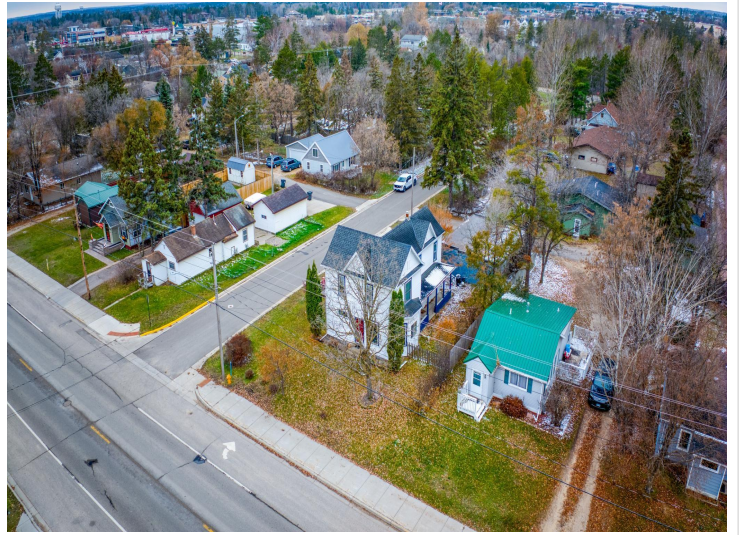
\$219,900
MLS 6460537 Residential
2701 Irvine Avenue
Bemidji MN 56601



website: www.AffinityRealEstate.com | email: info@affinityrealestate.com | office: 218-237-3333 | fax: 218-237-3377

Affinity
REAL ESTATE INC

\$219,900
MLS 6460537 Residential
2701 Irvine Avenue
Bemidji MN 56601



website: www.AffinityRealEstate.com | email: info@affinityrealestate.com | office: 218-237-3333 | fax: 218-237-3377

Affinity
REAL ESTATE INC

\$219,900
MLS 6460537 Residential
2701 Irvine Avenue
Bemidji MN 56601



website: www.AffinityRealEstate.com | email: info@affinityrealestate.com | office: 218-237-3333 | fax:218-237-3377

Affinity
REAL ESTATE INC

\$219,900
MLS 6460537 Residential
2701 Irvine Avenue
Bemidji MN 56601