



MLS 6460789 Residential

\$349,900

1,752 sq ft
3 bedrooms
2 baths

138 PHEASANT ST
Audubon MN 56511

Status: Active

Description:

\$5000 APPLIANCE ALLOWANCE OR CLOSING COST ALLOWANCE TO BUYER ON SUCCESSFUL CLOSE! AUDUBON NEW CONSTRUCTION. FEATURES ONE LEVEL 3 BED 2 BATH HOME WITH OPEN FLOOR PLAN. SMART SIDING AND BRICK EXTERIOR. SPACIOUS FOYER W/CLOSET. MAPLE CABS WITH GRANITE ISLAND AND COUNTERS. VINYL PLANKING AND TILE FLOORING. MAIN BEDROOM HAS BATH WITH TILE SHOWER AND WALK IN CLOSET. 2ND FULL BATH W/W&D HOOKUPS AND DOOR TO 2ND BEDROOM. SUNROOM, DEN OR 3RD BRM WITH DOOR TO OUTSIDE PATIO & BARN DOOR TO LR. VAULTED CEILINGS. ATTACHED 18X24 GARAGE AND DETACHED 32X24 GARAGE. CONCRETE DRIVE. VINYL SIDING AND CULTURED STONE EXTERIOR. LARGE .46 AC LOT LOCATED IN A NEWER DEVELOPMENT JUST SOUTH OF HWY 10 WITH EASY ACCESS TO FARGO MOORHEAD AREA. NG FLOOR HEAT, SPLIT HEAT PUMP, AND BB. 3' DOORS MAKE THIS HOME HANDICAP FRIENDLY. NO SPECIALS. NEW HOME WARRANTIES. EASY TO SHOW!

Additional Details:

Year Built	2022
Lot Acres	0.46
Lot Dimensions	100x200
Garage Stalls	3
School District	2889
Taxes	\$322
Taxes with Assessments	\$322
Tax Year	2023

Additional Features:

Basement: None **Fuel:** Electric, Natural Gas **Garage:** 3 **Heat:** Baseboard, Heat Pump, Radiant Floor **Sewer:** City Sewer/Connected **Water:** City Water/Connected **Air Conditioning:** Ductless Mini-Split, Heat Pump

Driving Directions:

HWY 10 W TO AUDUBON, GO S ON #11 TO PHEASANT ST TO PROPERTY



Listed By:
The Real Estate Company of Detroit Lakes

Affinity Real Estate Inc. participates in the Regional Multiple Listing Service of Minnesota, Inc Broker Reciprocity (sm) program, allowing us to display other broker's listings on our website. All properties are subject to prior sale, change or withdrawal.



Call Affinity Real Estate

218-237-3333

info@affinityrealestate.com



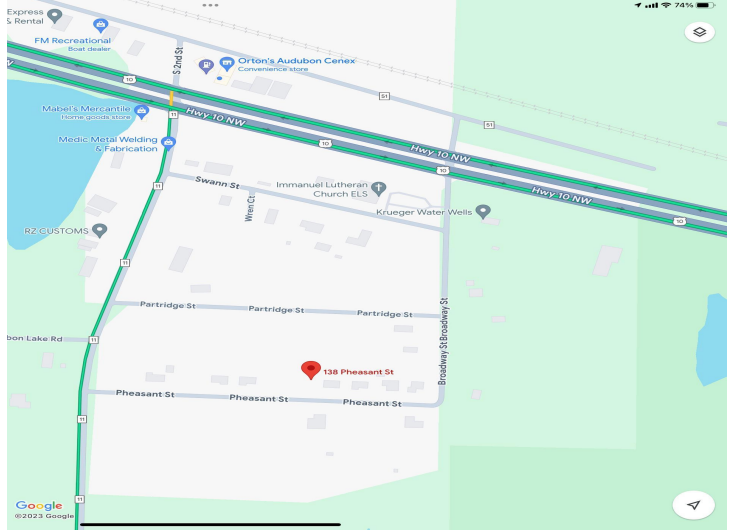
Affinity Real Estate - 600 Park Avenue South - Park Rapids MN 56470



website: www.AffinityRealEstate.com | email: info@affinityrealestate.com | office: 218-237-3333 | fax: 218-237-3377



\$349,900
 MLS 6460789 Residential
 138 PHEASANT ST
 Audubon MN 56511



website: www.AffinityRealEstate.com | email: info@affinityrealestate.com | office: 218-237-3333 | fax: 218-237-3377



\$349,900
 MLS 6460789 Residential
 138 PHEASANT ST
 Audubon MN 56511



website: www.AffinityRealEstate.com | email: info@affinityrealestate.com | office: 218-237-3333 | fax: 218-237-3377

Affinity
REAL ESTATE INC

\$349,900
MLS 6460789 Residential
138 PHEASANT ST
Audubon MN 56511



website: www.AffinityRealEstate.com | email: info@affinityrealestate.com | office: 218-237-3333 | fax: 218-237-3377

Affinity
REAL ESTATE INC

\$349,900
MLS 6460789 Residential
138 PHEASANT ST
Audubon MN 56511



website: www.AffinityRealEstate.com | email: info@affinityrealestate.com | office: 218-237-3333 | fax: 218-237-3377



\$349,900
 MLS 6460789 Residential
 138 PHEASANT ST
 Audubon MN 56511



website: www.AffinityRealEstate.com | email: info@affinityrealestate.com | office: 218-237-3333 | fax: 218-237-3377

Affinity
REAL ESTATE INC

\$349,900
MLS 6460789 Residential
138 PHEASANT ST
Audubon MN 56511



website: www.AffinityRealEstate.com | email: info@affinityrealestate.com | office: 218-237-3333 | fax: 218-237-3377



\$349,900
MLS 6460789 Residential
138 PHEASANT ST
Audubon MN 56511