



MLS 6460889 Commercial Sale

**\$1,200**

**Description:**

At the waters edge of Lake Bemidji! This is one of the best locations in Bemidji. Office space with fantastic water views and high traffic area of Bemidji on Paul Bunyan Drive. Located at the South end of Lake Bemidji. Lower level office space consists of 4 cubical areas, 1 closed office space and another office space that is partially open. Shared use of the main door. 2 bathrooms and main sign space for your business. Up to 6 Parking spots available. Lease price includes the heat and electric, building insurance, lawn maintenance, snow removal. This space is finished and ready for you to move in.

**Additional Details:**

Year Built	2000
Lot Acres	0.59
Lot Dimensions	300 x 100
School District	31
Taxes	\$19,122
Taxes with Assessments	\$19,122
Tax Year	2023

**Additional Features:**

**Basement:** Full **Fuel:** Natural Gas **Heat:** Forced Air, Radiant **Sewer:** City Sewer/Connected **Water:** City Water/Connected **Air Conditioning:** Central Air

**Driving Directions:**

North on Paul Bunyan Drive S to the South end of Lake Bemidji. Across from the Dairy Queen and Ace on the Lake.



Listed By:  
Coldwell Banker Crown Realtors

Affinity Real Estate Inc. participates in the Regional Multiple Listing Service of Minnesota, Inc Broker Reciprocity (sm) program, allowing us to display other broker's listings on our website. All properties are subject to prior sale, change or withdrawal.



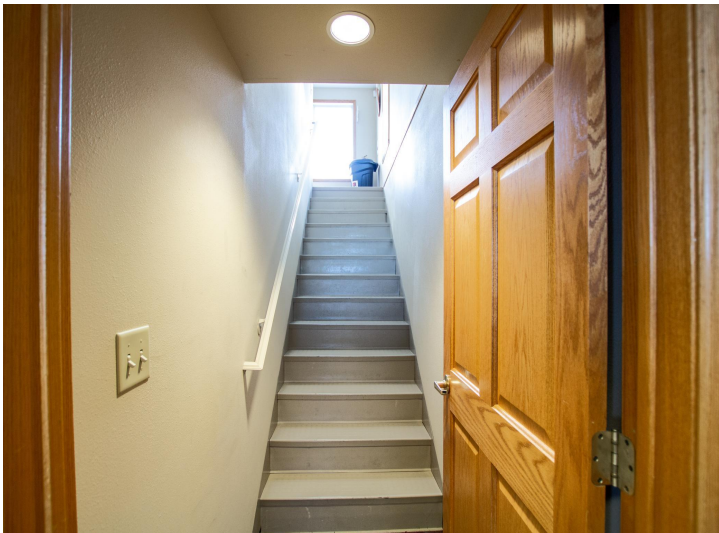
**Call Affinity Real Estate**

**218-237-3333**

**info@affinityrealestate.com**



**Affinity Real Estate - 600 Park Avenue South - Park Rapids MN 56470**



website: [www.AffinityRealEstate.com](http://www.AffinityRealEstate.com) | email: [info@affinityrealestate.com](mailto:info@affinityrealestate.com) | office: 218-237-3333 | fax:218-237-3377



**\$1,200**  
MLS 6460889 Commercial  
Sale  
809 Paul Bunyan Drive  
Bemidji MN 56601



website: [www.AffinityRealEstate.com](http://www.AffinityRealEstate.com) | email: [info@affinityrealestate.com](mailto:info@affinityrealestate.com) | office: 218-237-3333 | fax:218-237-3377



**\$1,200**  
MLS 6460889 Commercial  
Sale  
809 Paul Bunyan Drive  
Bemidji MN 56601



website: [www.AffinityRealEstate.com](http://www.AffinityRealEstate.com) | email: [info@affinityrealestate.com](mailto:info@affinityrealestate.com) | office: 218-237-3333 | fax:218-237-3377



**\$1,200**  
MLS 6460889 Commercial  
Sale  
809 Paul Bunyan Drive  
Bemidji MN 56601



website: [www.AffinityRealEstate.com](http://www.AffinityRealEstate.com) | email: [info@affinityrealestate.com](mailto:info@affinityrealestate.com) | office: 218-237-3333 | fax:218-237-3377

**Affinity**  
REAL ESTATE INC

**\$1,200**  
MLS 6460889 Commercial  
Sale  
809 Paul Bunyan Drive  
Bemidji MN 56601