



MLS 6461074 Lake Home

**\$649,900**

3,300 sq ft  
2 bedrooms  
2 baths

24962 Heirloom Drive  
Akeley MN 56433

Waterfront: Eleventh Crow Wing

Status: Pending

#### Description:

Don't miss this stunning fully remodeled two-bedroom, two-bath, walk-out Lake home, located on a quiet cove on pristine Eleventh Crow Wing Lake. This double lot, year-round home will not disappoint, boasting spectacular views of the lake from both levels, wide open rooms for easy entertaining, open kitchen design showcased by custom cabinets, stainless steel appliances, custom bathroom finishes, wet bar, full laundry, sauna bathing, large 2 tier deck overlooking the lake and nice beach area with large fire pit. Floating dock included. On chilly nights, cozy up to either of the 2 different fireplaces in the spacious great rooms. Windows showcase all that nature and lake living has to offer. The lake has excellent water quality for boating and fishing. This home is close to all kinds of activities: golf, the Heartland State Trail, Paul Bunyan State Park with numerous ATV/bike trails, and is 9 miles from Walker and Nevis and a short drive to Park Rapids. 2 car garage and double carport.

#### Additional Details:

Year Built	1973
Lot Acres	1.39
Lot Dimensions	200x277
Garage Stalls	2
School District	113
Taxes	\$2,762
Taxes with Assessments	\$2,762
Tax Year	2023

#### Additional Features:

**Basement:** Block, Daylight/Lookout Windows, Finished, Full, Storage Space, Walkout **Fuel:** Electric, Propane, Wood **Garage:** 2 **Heat:** Baseboard, Boiler, Ductless Mini-Split, Fireplace(s), Hot Water, Radiant Floor **Sewer:** Septic System Compliant - Yes, Tank with Drainage Field **Water:** Private, Well **Air Conditioning:** Ductless Mini-Split

#### Driving Directions:

From Akeley, go north on State 64 to right on Hazel, then a quick left on Heirloom Dr. to home on right at the top of the hill.



Listed By:  
eXp Realty

Affinity Real Estate Inc. participates in the Regional Multiple Listing Service of Minnesota, Inc Broker Reciprocity (sm) program, allowing us to display other broker's listings on our website. All properties are subject to prior sale, change or withdrawal.



Call Affinity Real Estate

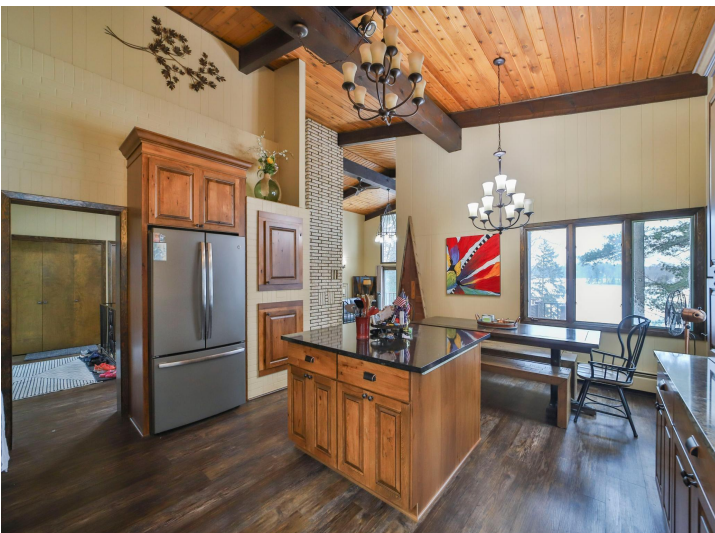
**218-237-3333**

[info@affinityrealestate.com](mailto:info@affinityrealestate.com)



Affinity Real Estate - 600 Park Avenue South - Park Rapids MN 56470





website: [www.AffinityRealEstate.com](http://www.AffinityRealEstate.com) | email: [info@affinityrealestate.com](mailto:info@affinityrealestate.com) | office: 218-237-3333 | fax: 218-237-3377

**Affinity**  
REAL ESTATE INC

**\$649,900**  
MLS 6461074 Lake Home  
24962 Heirloom Drive  
Akeley MN 56433





website: [www.AffinityRealEstate.com](http://www.AffinityRealEstate.com) | email: [info@affinityrealestate.com](mailto:info@affinityrealestate.com) | office: 218-237-3333 | fax: 218-237-3377



**\$649,900**  
 MLS 6461074 Lake Home  
 24962 Heirloom Drive  
 Akeley MN 56433



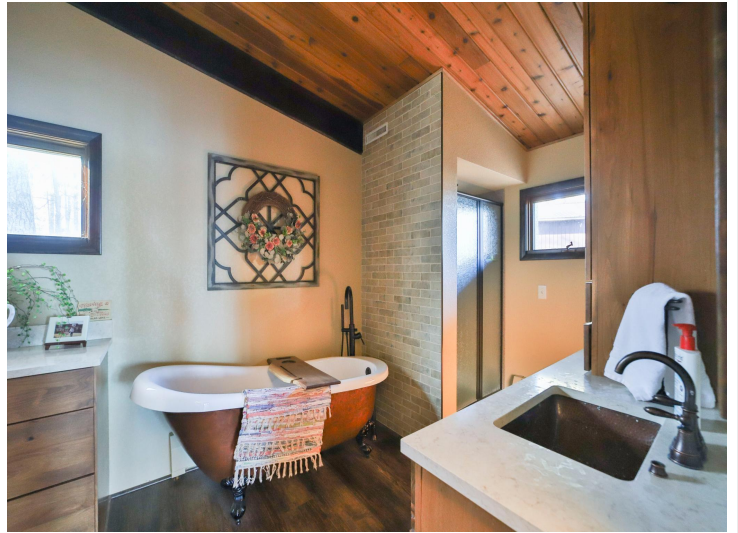


website: [www.AffinityRealEstate.com](http://www.AffinityRealEstate.com) | email: [info@affinityrealestate.com](mailto:info@affinityrealestate.com) | office: 218-237-3333 | fax: 218-237-3377

**Affinity**  
REAL ESTATE INC

**\$649,900**  
MLS 6461074 Lake Home  
24962 Heirloom Drive  
Akeley MN 56433





website: [www.AffinityRealEstate.com](http://www.AffinityRealEstate.com) | email: [info@affinityrealestate.com](mailto:info@affinityrealestate.com) | office: 218-237-3333 | fax: 218-237-3377

**Affinity**  
REAL ESTATE INC

**\$649,900**

MLS 6461074 Lake Home  
24962 Heirloom Drive  
Akeley MN 56433





website: [www.AffinityRealEstate.com](http://www.AffinityRealEstate.com) | email: [info@affinityrealestate.com](mailto:info@affinityrealestate.com) | office: 218-237-3333 | fax: 218-237-3377

**Affinity**  
REAL ESTATE INC

**\$649,900**  
MLS 6461074 Lake Home  
24962 Heirloom Drive  
Akeley MN 56433



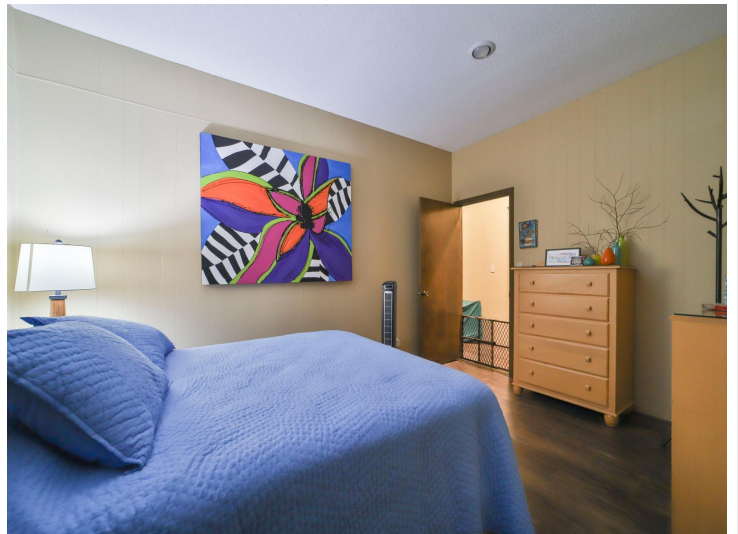


website: [www.AffinityRealEstate.com](http://www.AffinityRealEstate.com) | email: [info@affinityrealestate.com](mailto:info@affinityrealestate.com) | office: 218-237-3333 | fax: 218-237-3377

**Affinity**  
REAL ESTATE INC

**\$649,900**  
MLS 6461074 Lake Home  
24962 Heirloom Drive  
Akeley MN 56433





website: [www.AffinityRealEstate.com](http://www.AffinityRealEstate.com) | email: [info@affinityrealestate.com](mailto:info@affinityrealestate.com) | office: 218-237-3333 | fax: 218-237-3377



**\$649,900**  
MLS 6461074 Lake Home  
24962 Heirloom Drive  
Akeley MN 56433





website: [www.AffinityRealEstate.com](http://www.AffinityRealEstate.com) | email: [info@affinityrealestate.com](mailto:info@affinityrealestate.com) | office: 218-237-3333 | fax: 218-237-3377



**\$649,900**  
 MLS 6461074 Lake Home  
 24962 Heirloom Drive  
 Akeley MN 56433





website: [www.AffinityRealEstate.com](http://www.AffinityRealEstate.com) | email: [info@affinityrealestate.com](mailto:info@affinityrealestate.com) | office: 218-237-3333 | fax:218-237-3377



**\$649,900**

MLS 6461074 Lake Home  
24962 Heirloom Drive  
Akeley MN 56433