



MLS 6462383 Lake Home

**\$489,000**

2,650 sq ft  
3 bedrooms  
3 baths

23101 Great Pine Trail  
Nevis MN 56467

Waterfront: Spider Lake (29011700)

Status: Pending

**Description:**

Indulge in year-round lakeside living at this stunning Spider Lake home, where beauty meets privacy. This meticulously updated retreat features an expanded primary suite, new floor coverings, and stylish window treatments throughout. Embrace enchanting lake views from every room, with sandy lakeshore and beautiful tree cover creating a serene backdrop. Enjoy the best of every season with endless outdoor activities like snowmobiling, fishing, and kayaking. Conveniently located in Nevis, minutes from Park Rapids, and with the Heartland Trail and Paul Bunyan State Forest at your doorstep, this home offers a perfect blend of tranquility and adventure for hikers, bikers, snowmobilers, and fishermen alike. Your dream lakeside lifestyle awaits!

**Additional Details:**

Year Built	1971
Lot Acres	0.82
Lot Dimensions	290x275x1rr.
School District	308
Taxes	\$2,536
Taxes with Assessments	\$2,736
Tax Year	2023

**Additional Features:**

**Fuel:** Electric, Wood **Heat:** Baseboard, Boiler, Fireplace(s), Hot Water

**Driving Directions:**

From Hwys 71/34 in Park Rapids. East on Hwy 34 to Nevis. Left on Cty 2. Follow to a left on Great Pine Drive. Left on Great Pine Trail. Right to #23101.



Listed By:  
Coldwell Banker Crown Realtors

Affinity Real Estate Inc. participates in the Regional Multiple Listing Service of Minnesota, Inc Broker Reciprocity (sm) program, allowing us to display other broker's listings on our website. All properties are subject to prior sale, change or withdrawal.



**Call Affinity Real Estate**

**218-237-3333**

**info@affinityrealestate.com**



**Affinity Real Estate - 600 Park Avenue South - Park Rapids MN 56470**





website: [www.AffinityRealEstate.com](http://www.AffinityRealEstate.com) | email: [info@affinityrealestate.com](mailto:info@affinityrealestate.com) | office: 218-237-3333 | fax: 218-237-3377



**\$489,000**  
 MLS 6462383 Lake Home  
 23101 Great Pine Trail  
 Nevis MN 56467





website: [www.AffinityRealEstate.com](http://www.AffinityRealEstate.com) | email: [info@affinityrealestate.com](mailto:info@affinityrealestate.com) | office: 218-237-3333 | fax: 218-237-3377



**\$489,000**  
 MLS 6462383 Lake Home  
 23101 Great Pine Trail  
 Nevis MN 56467





website: [www.AffinityRealEstate.com](http://www.AffinityRealEstate.com) | email: [info@affinityrealestate.com](mailto:info@affinityrealestate.com) | office: 218-237-3333 | fax: 218-237-3377

**Affinity**  
REAL ESTATE INC

**\$489,000**  
MLS 6462383 Lake Home  
23101 Great Pine Trail  
Nevis MN 56467





website: [www.AffinityRealEstate.com](http://www.AffinityRealEstate.com) | email: [info@affinityrealestate.com](mailto:info@affinityrealestate.com) | office: 218-237-3333 | fax: 218-237-3377

**Affinity**  
REAL ESTATE INC

**\$489,000**  
MLS 6462383 Lake Home  
23101 Great Pine Trail  
Nevis MN 56467



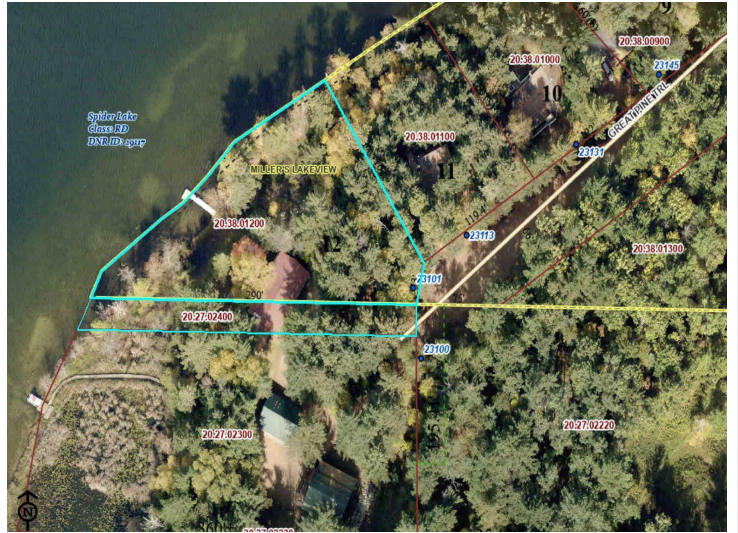


website: [www.AffinityRealEstate.com](http://www.AffinityRealEstate.com) | email: [info@affinityrealestate.com](mailto:info@affinityrealestate.com) | office: 218-237-3333 | fax: 218-237-3377



**\$489,000**  
 MLS 6462383 Lake Home  
 23101 Great Pine Trail  
 Nevis MN 56467





website: [www.AffinityRealEstate.com](http://www.AffinityRealEstate.com) | email: [info@affinityrealestate.com](mailto:info@affinityrealestate.com) | office: 218-237-3333 | fax: 218-237-3377



**\$489,000**

MLS 6462383 Lake Home  
23101 Great Pine Trail  
Nevis MN 56467