



MLS 6463549 Lake Home

**\$728,492**

3,759 sq ft  
5 bedrooms  
3 baths

Lot 9 Padre Court  
Nisswa MN 56468

Waterfront: Fawn Lake (Nisswa  
City)

Status: Active

**Description:**

This property is located in the Fawn Ridge development with access to 220 acres of Fawn, Edna and Hidden Lakes!! It features vaulted ceilings, 8 foot interior doors, a gas fireplace with built-ins, granite countertops throughout, a spacious pantry, a large kitchen with a center island and windows above the sink, and stainless steel appliances! The master bedroom is privately situated across the house from the other two bedrooms and includes a private bathroom with a walk-in ceramic shower and walk-in closet!

**Additional Details:**

Year Built	2024
Lot Acres	0.47
Lot Dimensions	85x167x165x169
Garage Stalls	4
School District	181
Taxes	\$178
Taxes with Assessments	\$178
Tax Year	2023

**Additional Features:**

**Basement:** Drain Tiled, 8 ft+ Pour, Finished, Full, Concrete, Sump Pump, Walkout **Fuel:** Natural Gas **Garage:** 4 **Heat:** Forced Air, Fireplace(s)  
**Sewer:** Shared Septic, Tank with Drainage Field **Water:** Submersible - 4 Inch, Drilled, Private, Well **Air Conditioning:** Central Air

**Driving Directions:**

Take 371 North, left onto Upper Roy Lake Road, right onto Padre Place, right onto Padre Court, property is on the right



Listed By:  
Counselor Realty Brainerd Lakes

Affinity Real Estate Inc. participates in the Regional Multiple Listing Service of Minnesota, Inc Broker Reciprocity (sm) program, allowing us to display other broker's listings on our website. All properties are subject to prior sale, change or withdrawal.



**Call Affinity Real Estate**

**218-237-3333**

**info@affinityrealestate.com**



**Affinity Real Estate - 600 Park Avenue South - Park Rapids MN 56470**





website: [www.AffinityRealEstate.com](http://www.AffinityRealEstate.com) | email: [info@affinityrealestate.com](mailto:info@affinityrealestate.com) | office: 218-237-3333 | fax: 218-237-3377



**\$728,492**  
 MLS 6463549 Lake Home  
 Lot 9 Padre Court  
 Nisswa MN 56468





website: [www.AffinityRealEstate.com](http://www.AffinityRealEstate.com) | email: [info@affinityrealestate.com](mailto:info@affinityrealestate.com) | office: 218-237-3333 | fax: 218-237-3377

**Affinity**  
REAL ESTATE INC

**\$728,492**  
MLS 6463549 Lake Home  
Lot 9 Padre Court  
Nisswa MN 56468



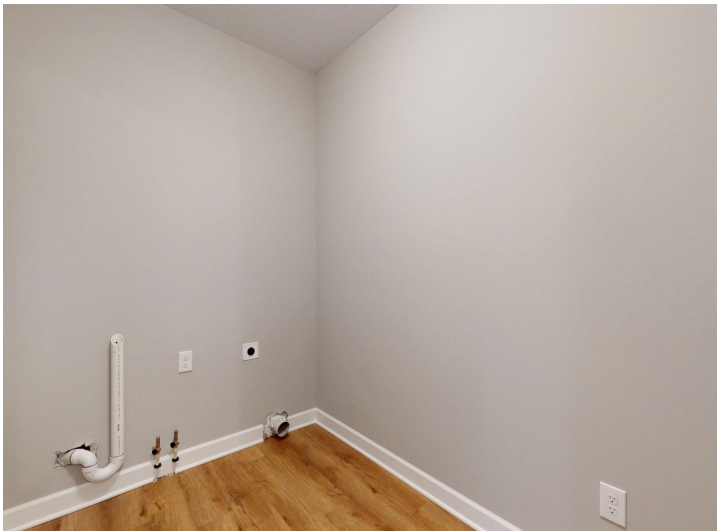


website: [www.AffinityRealEstate.com](http://www.AffinityRealEstate.com) | email: [info@affinityrealestate.com](mailto:info@affinityrealestate.com) | office: 218-237-3333 | fax: 218-237-3377



**\$728,492**  
 MLS 6463549 Lake Home  
 Lot 9 Padre Court  
 Nisswa MN 56468



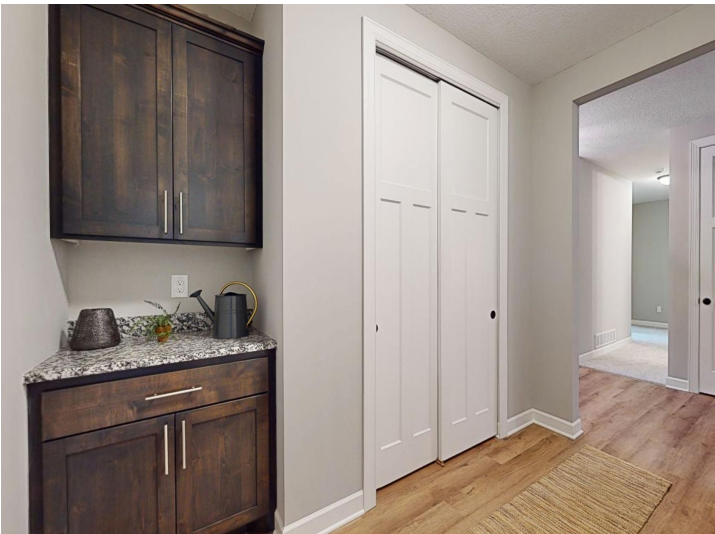


website: [www.AffinityRealEstate.com](http://www.AffinityRealEstate.com) | email: [info@affinityrealestate.com](mailto:info@affinityrealestate.com) | office: 218-237-3333 | fax: 218-237-3377

**Affinity**  
REAL ESTATE INC

**\$728,492**  
MLS 6463549 Lake Home  
Lot 9 Padre Court  
Nisswa MN 56468





website: [www.AffinityRealEstate.com](http://www.AffinityRealEstate.com) | email: [info@affinityrealestate.com](mailto:info@affinityrealestate.com) | office: 218-237-3333 | fax: 218-237-3377



**\$728,492**  
MLS 6463549 Lake Home  
Lot 9 Padre Court  
Nisswa MN 56468





website: [www.AffinityRealEstate.com](http://www.AffinityRealEstate.com) | email: [info@affinityrealestate.com](mailto:info@affinityrealestate.com) | office: 218-237-3333 | fax: 218-237-3377



**\$728,492**  
 MLS 6463549 Lake Home  
 Lot 9 Padre Court  
 Nisswa MN 56468





website: [www.AffinityRealEstate.com](http://www.AffinityRealEstate.com) | email: [info@affinityrealestate.com](mailto:info@affinityrealestate.com) | office: 218-237-3333 | fax: 218-237-3377



**\$728,492**  
 MLS 6463549 Lake Home  
 Lot 9 Padre Court  
 Nisswa MN 56468



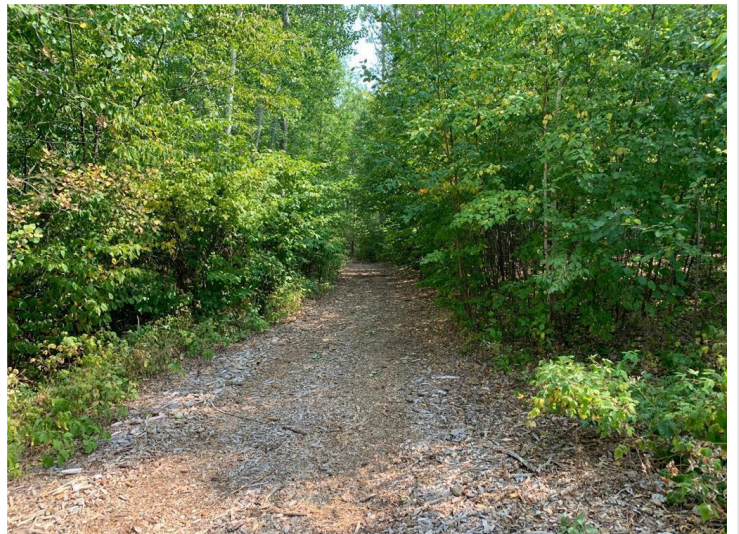


website: [www.AffinityRealEstate.com](http://www.AffinityRealEstate.com) | email: [info@affinityrealestate.com](mailto:info@affinityrealestate.com) | office: 218-237-3333 | fax: 218-237-3377



**\$728,492**  
MLS 6463549 Lake Home  
Lot 9 Padre Court  
Nisswa MN 56468



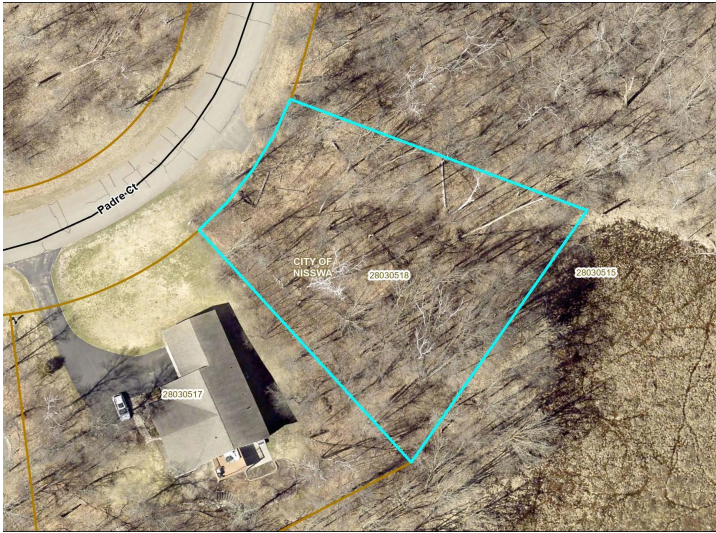


website: [www.AffinityRealEstate.com](http://www.AffinityRealEstate.com) | email: [info@affinityrealestate.com](mailto:info@affinityrealestate.com) | office: 218-237-3333 | fax: 218-237-3377



**\$728,492**  
 MLS 6463549 Lake Home  
 Lot 9 Padre Court  
 Nisswa MN 56468





website: [www.AffinityRealEstate.com](http://www.AffinityRealEstate.com) | email: [info@affinityrealestate.com](mailto:info@affinityrealestate.com) | office: 218-237-3333 | fax:218-237-3377



**\$728,492**  
MLS 6463549 Lake Home  
Lot 9 Padre Court  
Nisswa MN 56468