



MLS 6464262 Residential

\$549,900

4,156 sq ft
3 bedrooms
4 baths

604 Pine Needle Drive
Perham MN 56573

Status: Active

Description:

PERHAM CITY HOME! Spacious 3 bedroom 4 bath two-story in sought after COUNTRY PINE ESTATES! The main level features custom kitchen cabinets with two islands, breakfast nook, pantry, and separate dining, living and family rooms. Sauna with shower. Huge Owner's suite with private bath and gas fireplace. Full finished basement with kitchenette, family room with gas fireplace, ample storage and steps to the garage. Central air. Oversized and attached 2-stall insulated and heated garage. Maintenance-free deck with gazebo. Oodles of outdoor space with this oversized lot. NEW shingles on home and garage. Small storage shed, lawn irrigation and no special assessments. Across the street from a city park and close to the walking path and golf course!

Additional Details:

Year Built	1993
Lot Acres	0.65
Lot Dimensions	160x178
Garage Stalls	2
School District	549
Taxes	\$4,648
Taxes with Assessments	\$4,728
Tax Year	2024

Additional Features:

Basement: Block, Finished, Full **Fuel:** Natural Gas **Garage:** 2 **Heat:** Forced Air, Fireplace(s) **Sewer:** City Sewer/Connected **Water:** City Water/Connected **Air Conditioning:** Central Air

Driving Directions:

NW side of Perham. One block west of the softball fields and soccer fields and east of Country Pine Park.



Listed By:
New Horizons Realty of Perham

Affinity Real Estate Inc. participates in the Regional Multiple Listing Service of Minnesota, Inc Broker Reciprocity (sm) program, allowing us to display other broker's listings on our website. All properties are subject to prior sale, change or withdrawal.



Call Affinity Real Estate

218-237-3333

info@affinityrealestate.com



Affinity Real Estate - 600 Park Avenue South - Park Rapids MN 56470



website: www.AffinityRealEstate.com | email: info@affinityrealestate.com | office: 218-237-3333 | fax:218-237-3377



\$549,900
MLS 6464262 Residential
604 Pine Needle Drive
Perham MN 56573



website: www.AffinityRealEstate.com | email: info@affinityrealestate.com | office: 218-237-3333 | fax:218-237-3377



\$549,900
MLS 6464262 Residential
604 Pine Needle Drive
Perham MN 56573



website: www.AffinityRealEstate.com | email: info@affinityrealestate.com | office: 218-237-3333 | fax:218-237-3377



\$549,900
MLS 6464262 Residential
604 Pine Needle Drive
Perham MN 56573



website: www.AffinityRealEstate.com | email: info@affinityrealestate.com | office: 218-237-3333 | fax: 218-237-3377

Affinity
REAL ESTATE INC

\$549,900
MLS 6464262 Residential
604 Pine Needle Drive
Perham MN 56573



website: www.AffinityRealEstate.com | email: info@affinityrealestate.com | office: 218-237-3333 | fax:218-237-3377



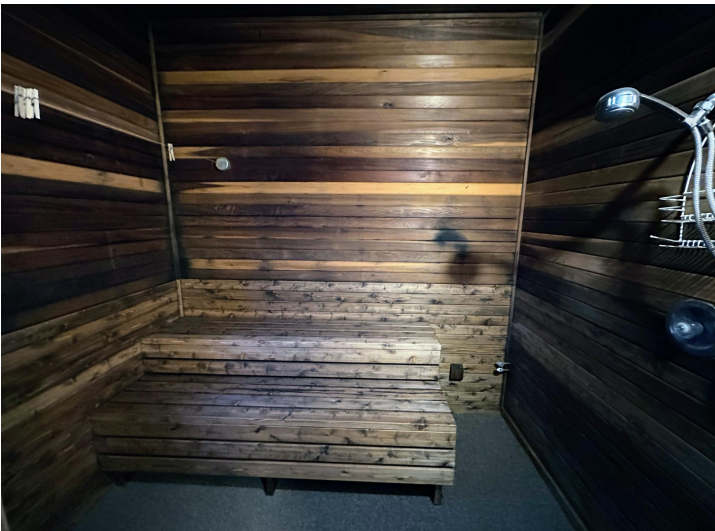
\$549,900
MLS 6464262 Residential
604 Pine Needle Drive
Perham MN 56573



website: www.AffinityRealEstate.com | email: info@affinityrealestate.com | office: 218-237-3333 | fax:218-237-3377

Affinity
REAL ESTATE INC

\$549,900
MLS 6464262 Residential
604 Pine Needle Drive
Perham MN 56573



website: www.AffinityRealEstate.com | email: info@affinityrealestate.com | office: 218-237-3333 | fax:218-237-3377

Affinity
REAL ESTATE INC

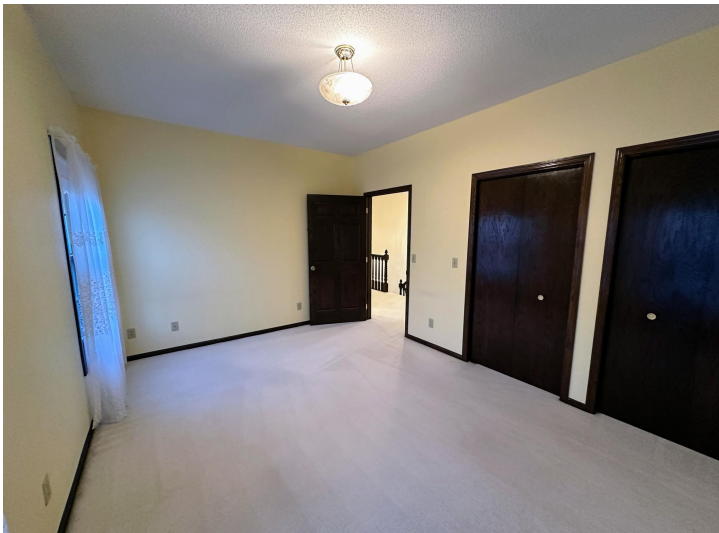
\$549,900
MLS 6464262 Residential
604 Pine Needle Drive
Perham MN 56573



website: www.AffinityRealEstate.com | email: info@affinityrealestate.com | office: 218-237-3333 | fax:218-237-3377

Affinity
REAL ESTATE INC

\$549,900
MLS 6464262 Residential
604 Pine Needle Drive
Perham MN 56573



website: www.AffinityRealEstate.com | email: info@affinityrealestate.com | office: 218-237-3333 | fax:218-237-3377



\$549,900
MLS 6464262 Residential
604 Pine Needle Drive
Perham MN 56573



website: www.AffinityRealEstate.com | email: info@affinityrealestate.com | office: 218-237-3333 | fax:218-237-3377



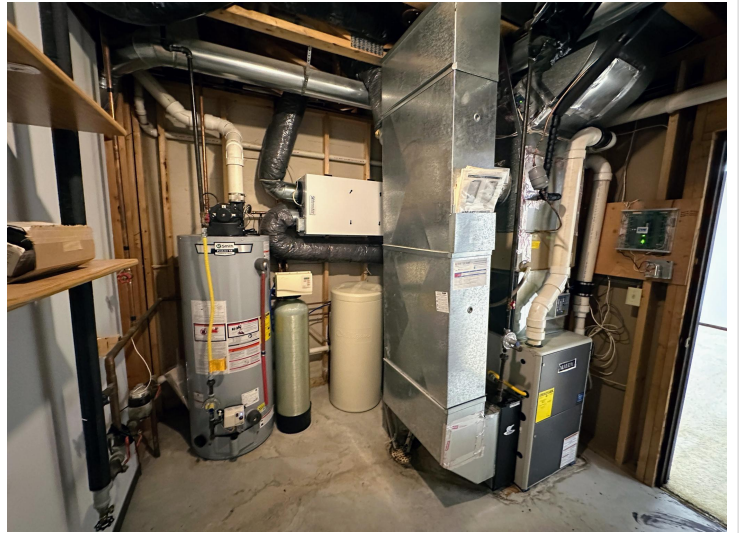
\$549,900
MLS 6464262 Residential
604 Pine Needle Drive
Perham MN 56573



website: www.AffinityRealEstate.com | email: info@affinityrealestate.com | office: 218-237-3333 | fax: 218-237-3377



\$549,900
MLS 6464262 Residential
604 Pine Needle Drive
Perham MN 56573



website: www.AffinityRealEstate.com | email: info@affinityrealestate.com | office: 218-237-3333 | fax:218-237-3377



\$549,900
MLS 6464262 Residential
604 Pine Needle Drive
Perham MN 56573