



MLS 6464643 Land

\$99,900

8 Acres
Finished Lot(s)

xxx Bear Tracks Lane
Longville MN 56655

Status: Active

Description:

8 acres close to Woman lake. Building site prepared \$35,000 in dirt work and level building pad. Great home site or perfect place to build a pole barn for your UpNorth toys.

Additional Details:

Lot Acres	8
Lot Dimensions	791x665 irr
School District	118
Taxes	\$158
Taxes with Assessments	\$158
Tax Year	2023

Additional Features:

Driving Directions:

From Longville go south on HWY 84 to the County Rd 11 Junction turn right, follow signs stay right.



Listed By:
Rusty's Up North Realty

Affinity Real Estate Inc. participates in the Regional Multiple Listing Service of Minnesota, Inc Broker Reciprocity (sm) program, allowing us to display other broker's listings on our website. All properties are subject to prior sale, change or withdrawal.



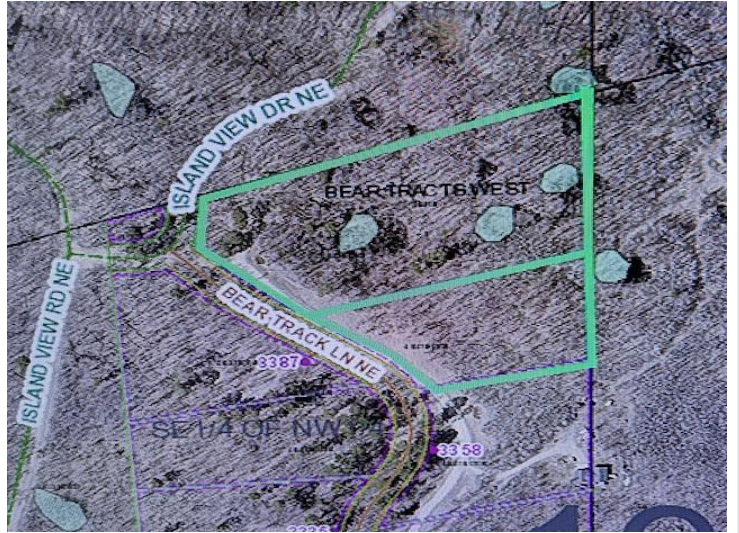
Call Affinity Real Estate

218-237-3333

info@affinityrealestate.com



Affinity Real Estate - 600 Park Avenue South - Park Rapids MN 56470



website: www.AffinityRealEstate.com | email: info@affinityrealestate.com | office: 218-237-3333 | fax:218-237-3377



\$99,900
MLS 6464643 Land
xxx Bear Tracks Lane
Longville MN 56655