



MLS 6464663 Land

\$480,000

48.3 Acres

Other

21566 County Highway 37
Detroit Lakes MN 56501

Status: Expired

Description:

48 acres on prime highway 34 and hwy 37 in between Detroit Lakes and Park Rapids. Great location for storage, or subdivide it up and parcel. Zoned commercial. 3 car garage, plus an overhang. Well and Septic! So many possibilities with this beautiful piece of property. Two PID'S, 42.6 acres and 6.01.

Additional Details:

Lot Acres	48.3
Lot Dimensions	1456x1312
School District	23
Taxes	\$334
Taxes with Assessments	\$334
Tax Year	2023

Additional Features:

Driving Directions:

MN 34 to Co Hwy 37



Listed By:
Northstar Real Estate Associates

Affinity Real Estate Inc. participates in the Regional Multiple Listing Service of Minnesota, Inc Broker Reciprocity (sm) program, allowing us to display other broker's listings on our website. All properties are subject to prior sale, change or withdrawal.



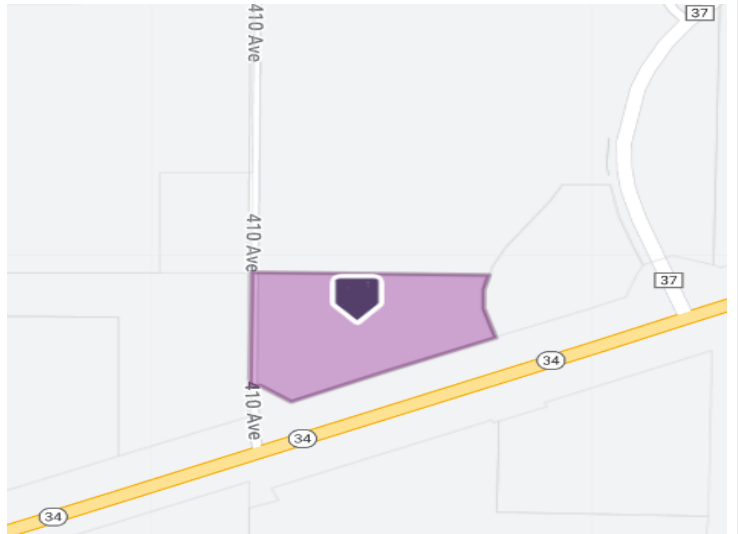
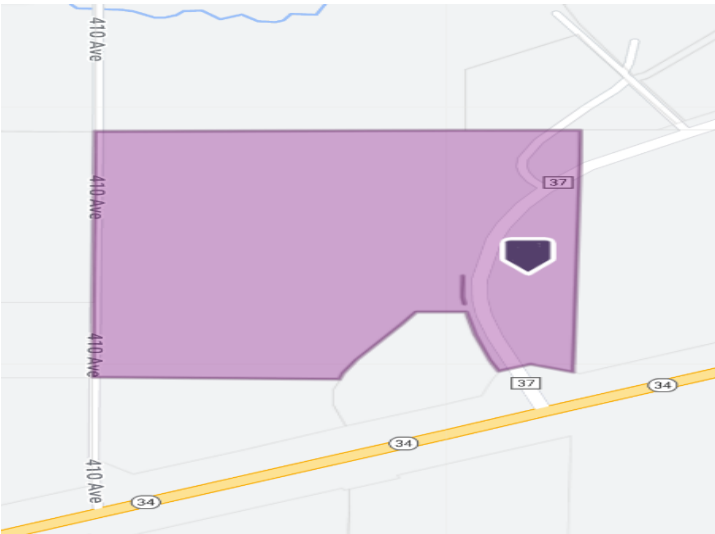
Call Affinity Real Estate

218-237-3333

info@affinityrealestate.com



Affinity Real Estate - 600 Park Avenue South - Park Rapids MN 56470



website: www.AffinityRealEstate.com | email: info@affinityrealestate.com | office: 218-237-3333 | fax: 218-237-3377



\$480,000

MLS 6464663 Land
21566 County Highway 37
Detroit Lakes MN 56501