



MLS 6468042 Commercial Sale

\$635,000



Description:

Honesty, Reliability and Professionalism is how HRP was Built and how it is run. A well run business that is profitable and has huge potential. They Sell, Service and Repair most gas operating equipment. From Lawn Equipment, Powersport, Snow throwers, Chair Saws and a whole lot more. Need a tune up, a part or some great advise HRP is the place. HRP has had the same owner since 2012. Business, Business Name, Customer Base, Building, Inventory and fixtures are included. Great Corner lot easy to load and unload.

Additional Details:

Year Built	1986
Lot Acres	0.26
Lot Dimensions	90 x 127
Garage Stalls	3
School District	31
Taxes	\$2,752
Taxes with Assessments	\$2,752
Tax Year	2021

Additional Features:

Fuel: Natural Gas **Garage:** 3 **Heat:** Forced Air **Sewer:** City Sewer/Connected **Water:** Private

Driving Directions:

2301 Ash Avenue NW



Listed By:
Edina Realty, Inc.

Affinity Real Estate Inc. participates in the Regional Multiple Listing Service of Minnesota, Inc Broker Reciprocity (sm) program, allowing us to display other broker's listings on our website. All properties are subject to prior sale, change or withdrawal.



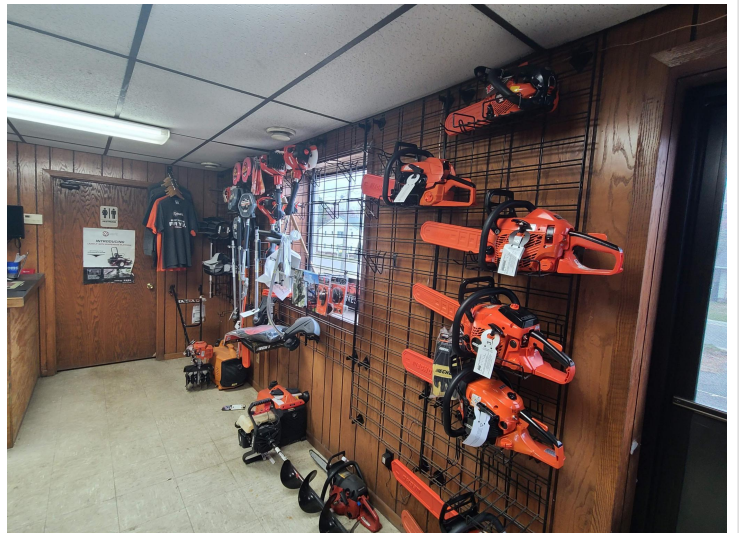
Call Affinity Real Estate

218-237-3333

info@affinityrealestate.com



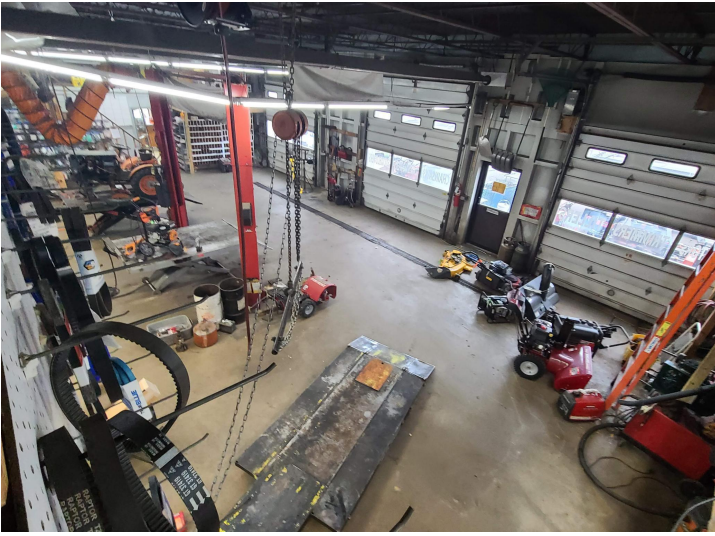
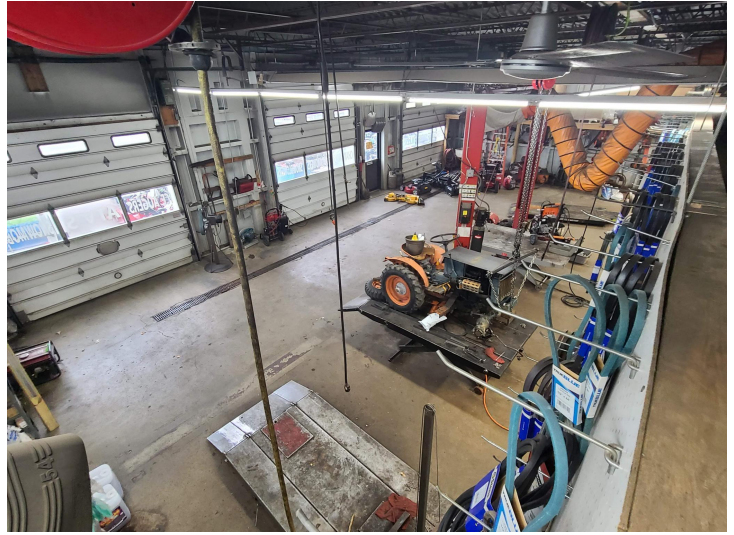
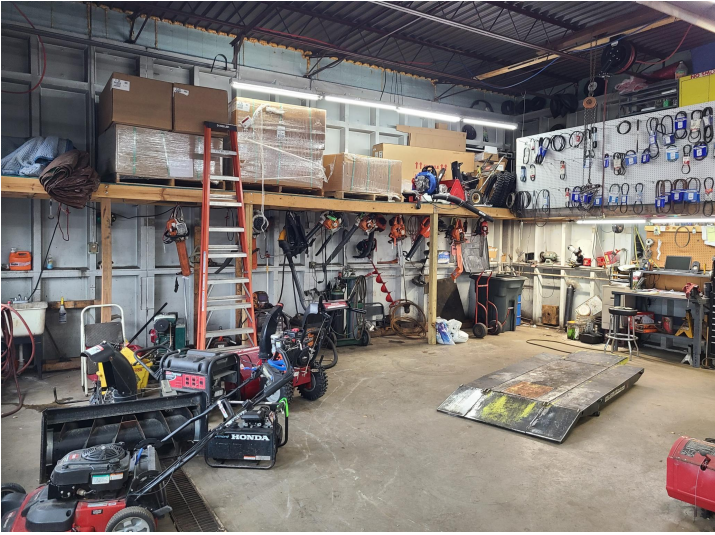
Affinity Real Estate - 600 Park Avenue South - Park Rapids MN 56470



website: www.AffinityRealEstate.com | email: info@affinityrealestate.com | office: 218-237-3333 | fax:218-237-3377



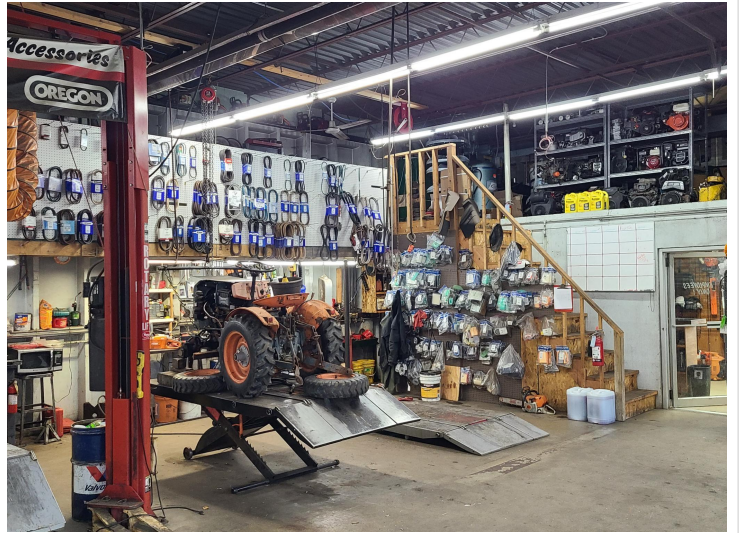
\$635,000
MLS 6468042 Commercial
Sale
2301 Ash Avenue
Bemidji MN 56601



website: www.AffinityRealEstate.com | email: info@affinityrealestate.com | office: 218-237-3333 | fax:218-237-3377



\$635,000
MLS 6468042 Commercial
Sale
2301 Ash Avenue
Bemidji MN 56601



website: www.AffinityRealEstate.com | email: info@affinityrealestate.com | office: 218-237-3333 | fax:218-237-3377



\$635,000
MLS 6468042 Commercial
Sale
2301 Ash Avenue
Bemidji MN 56601