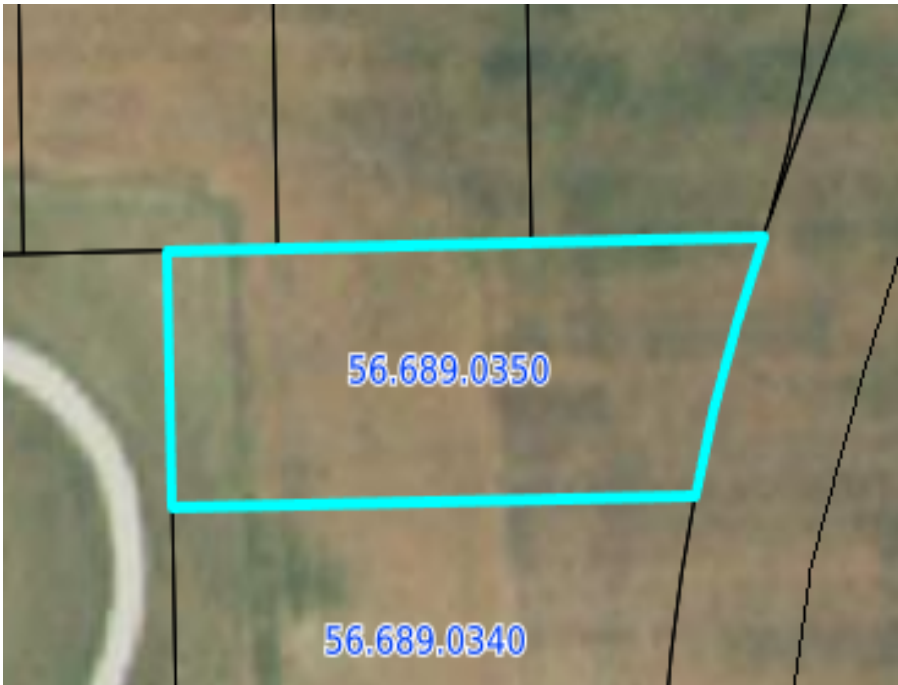




MLS 6468115 Lake Land

\$49,000



Description:

No taxes or specials due until May 2026! Escape the city, Hawley Minnesota is a 25 minute drive from Fargo Moorhead area, features Outstanding schools, close to many lakes and outdoor activities. Prairie Hills Estates, is a newer development on the North side of town, with a country feel, amenities feature Pickleball and Basketball Courts, a picnic shelter, a tree lined walking path and room for adding future playground equipment. Take the short drive and check us out!

Additional Details:

Lot Acres	0.29
Lot Dimensions	70x168.88
School District	150
Taxes	\$278
Taxes with Assessments	\$278
Tax Year	2025

Additional Features:

Driving Directions:

Turn North off of Hwy 10, turn left onto 15th Street South by the Super Value, go .2 miles turn Left onto Westgate Dr, which turns into Valley View. Continue to Scenic Lane.



Listed By:
REALTY XPERTS

Affinity Real Estate Inc. participates in the Regional Multiple Listing Service of Minnesota, Inc Broker Reciprocity (sm) program, allowing us to display other broker's listings on our website. All properties are subject to prior sale, change or withdrawal.



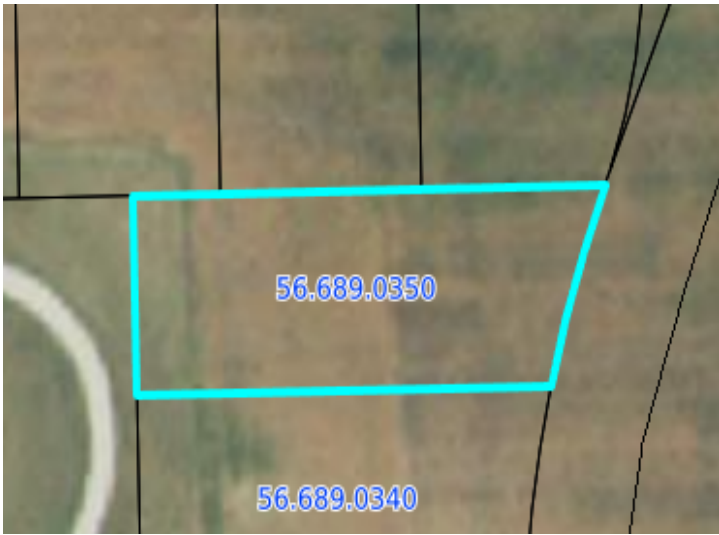
Call Affinity Real Estate

218-237-3333

info@affinityrealestate.com



Affinity Real Estate - 600 Park Avenue South - Park Rapids MN 56470



website: www.AffinityRealEstate.com | email: info@affinityrealestate.com | office: 218-237-3333 | fax:218-237-3377



\$49,000
MLS 6468115 Lake Land
2519 Valley View
Hawley MN 56549



website: www.AffinityRealEstate.com | email: info@affinityrealestate.com | office: 218-237-3333 | fax:218-237-3377



\$49,000
MLS 6468115 Lake Land
2519 Valley View
Hawley MN 56549



website: www.AffinityRealEstate.com | email: info@affinityrealestate.com | office: 218-237-3333 | fax:218-237-3377



\$49,000
MLS 6468115 Lake Land
2519 Valley View
Hawley MN 56549



website: www.AffinityRealEstate.com | email: info@affinityrealestate.com | office: 218-237-3333 | fax: 218-237-3377

Affinity
REAL ESTATE INC

\$49,000
MLS 6468115 Lake Land
2519 Valley View
Hawley MN 56549



website: www.AffinityRealEstate.com | email: info@affinityrealestate.com | office: 218-237-3333 | fax:218-237-3377



\$49,000
MLS 6468115 Lake Land
2519 Valley View
Hawley MN 56549



website: www.AffinityRealEstate.com | email: info@affinityrealestate.com | office: 218-237-3333 | fax:218-237-3377



\$49,000
MLS 6468115 Lake Land
2519 Valley View
Hawley MN 56549