



MLS 6468223 Lake Land

\$129,900

Description:

Fish Hook River Lot! This nicely wooded corner lot features over 1200 ft of Fish Hook River frontage and 12.74 acres of beautiful mature trees. Conveniently located in Park Rapids, and only minutes away from the shops downtown for shopping, the Heartland Trail (Snowmobile and Biking/Walking), Itasca State Park, the Paul Bunyan State Forest and much more. Call for an Appointment today!

Additional Details:

Lot Acres	12.84
Lot Dimensions	1549x587x350x162x19
School District	309
Taxes	\$1,288
Taxes with Assessments	\$1,288
Tax Year	2023

Additional Features:

Driving Directions:

From 34/71 in Park Rapids, South on 71 to 8th St. E., the head east on 8th St. E to Forest Ave. Right on Forest Ave to property on left.



Listed By:
Wolff & Simon Real Estate

Affinity Real Estate Inc. participates in the Regional Multiple Listing Service of Minnesota, Inc Broker Reciprocity (sm) program, allowing us to display other broker's listings on our website. All properties are subject to prior sale, change or withdrawal.



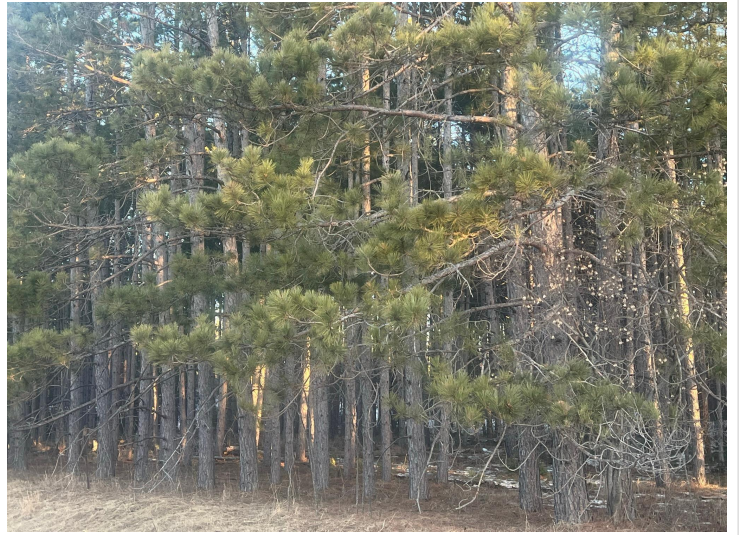
Call Affinity Real Estate

218-237-3333

info@affinityrealestate.com



Affinity Real Estate - 600 Park Avenue South - Park Rapids MN 56470



website: www.AffinityRealEstate.com | email: info@affinityrealestate.com | office: 218-237-3333 | fax: 218-237-3377



\$129,900
MLS 6468223 Lake Land
TBD 10th Street
Park Rapids MN 56470



website: www.AffinityRealEstate.com | email: info@affinityrealestate.com | office: 218-237-3333 | fax: 218-237-3377



\$129,900
 MLS 6468223 Lake Land
 TBD 10th Street
 Park Rapids MN 56470