



Affinity
REAL ESTATE INC.

MLS 6469024 Lake Home

\$625,000

2,070 sq ft
3 bedrooms
3 baths

8038 Lost Lake Road
Nisswa MN 56468

Waterfront: Spider Lake (Lake
Shore City)

Status: Canceled

Description:

NEW 3bd/3ba HOME PLAN at Spider Lake Preserve, a Maint Free Community on the Gull Lake Chain. Two homes are under construction and one is viewable at 8038 Lost Lake Rd #120. 2 lots are spoken for, another is reserved which leaves 6 lots for consideration. This community is a small & private single-family lake home community in the City of Lake Shore. This 35-acre community is nestled amongst Lost Lake Lodge, Causeway on Gull, Bar Harbor, Zorbaz, golf courses, and so much more. This private community has its own dock area, lake side patio and firepit area, pickleball court, private crushed granite path system and fine homes built by Thomas Allen Homes. This 3bd/3ba with Bonus Room starts at \$599k. This listing priced with optional sunroom & bonus config as 3rd Bd. Options avail 3rd garage, fireplace, patio, millwork pkgs, solid counters, many flooring options & more. Great private master suite and vaulted main aera. Now's the time to secure your Gull Lake enjoyment in 2024!

Additional Details:

Year Built	2024
Lot Acres	0.12
Lot Dimensions	64x83 Build Pad
Garage Stalls	2
School District	181
Taxes	(unreported)
Taxes with Assessments	(unreported)
Tax Year	2023

Additional Features:

Basement: Block, Slab **Fuel:** Natural Gas **Garage:** 2 **Heat:** Forced Air **Sewer:** City Sewer/Connected **Water:** Shared System, Well **Air Conditioning:** Central Air

Driving Directions:

From Highway 371 in Nisswa, take Country Rd 77 West to Zorbaz. Turn Right on Lost Lake Road to Community on your right.



Listed By:
Edina Realty, Inc.

Affinity Real Estate Inc. participates in the Regional Multiple Listing Service of Minnesota, Inc Broker Reciprocity (sm) program, allowing us to display other broker's listings on our website. All properties are subject to prior sale, change or withdrawal.



Call Affinity Real Estate

218-237-3333

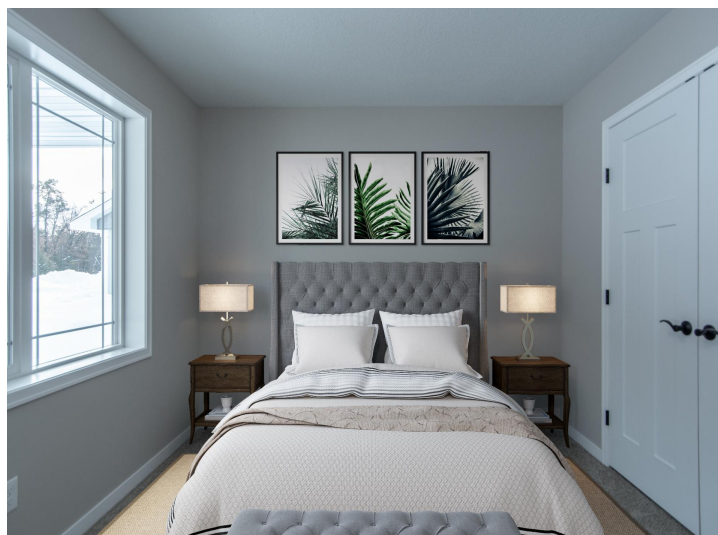
info@affinityrealestate.com

MLS

REALTOR

EQUAL OPPORTUNITY

Affinity Real Estate - 600 Park Avenue South - Park Rapids MN 56470



website: www.AffinityRealEstate.com | email: info@affinityrealestate.com | office: 218-237-3333 | fax: 218-237-3377



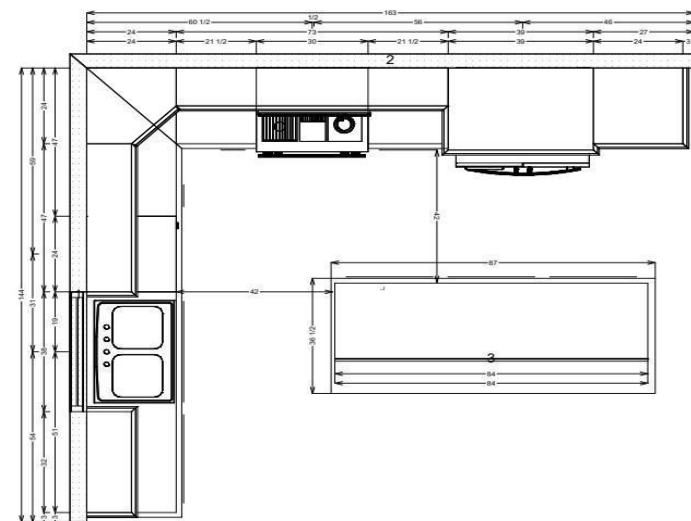
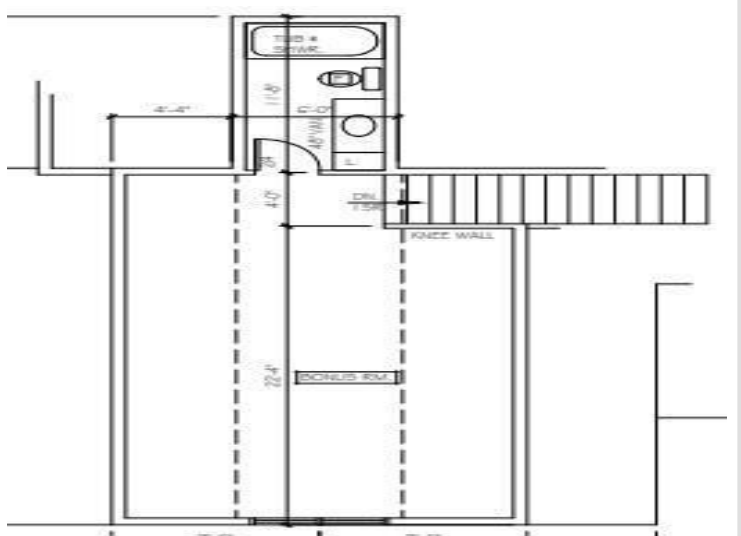
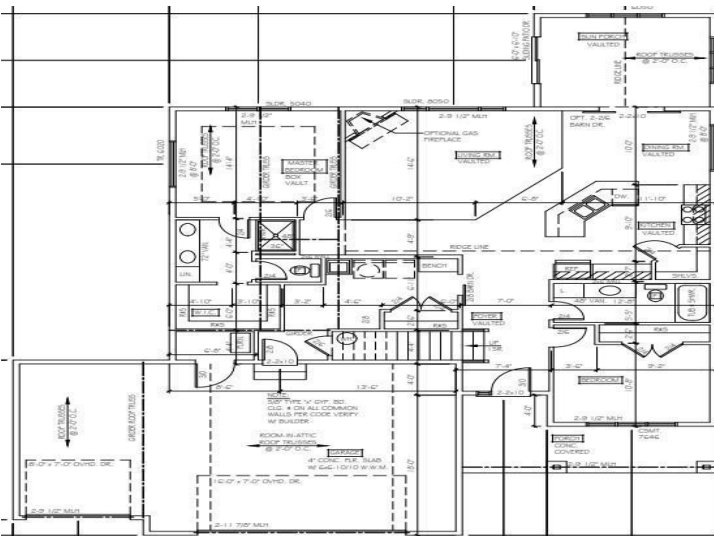
\$625,000
 MLS 6469024 Lake Home
 8038 Lost Lake Road
 Nisswa MN 56468



website: www.AffinityRealEstate.com | email: info@affinityrealestate.com | office: 218-237-3333 | fax: 218-237-3377

Affinity
REAL ESTATE INC

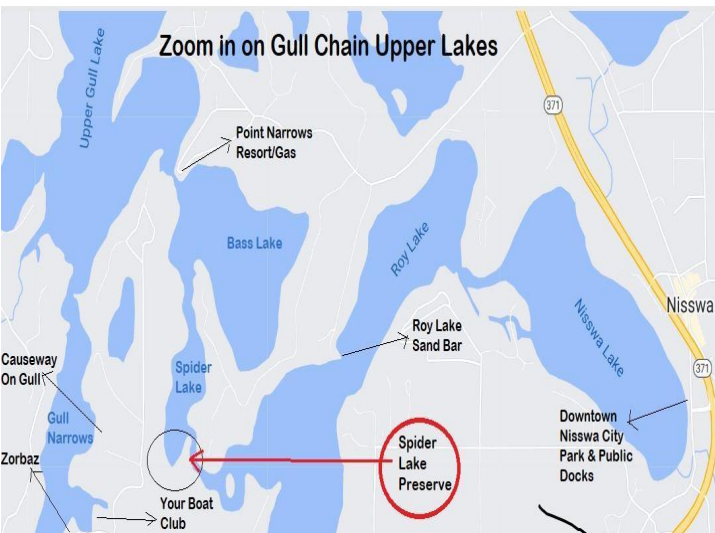
\$625,000
MLS 6469024 Lake Home
8038 Lost Lake Road
Nisswa MN 56468



website: www.AffinityRealEstate.com | email: info@affinityrealestate.com | office: 218-237-3333 | fax: 218-237-3377



\$625,000
 MLS 6469024 Lake Home
 8038 Lost Lake Road
 Nisswa MN 56468



website: www.AffinityRealEstate.com | email: info@affinityrealestate.com | office: 218-237-3333 | fax: 218-237-3377

Affinity
REAL ESTATE INC

\$625,000
MLS 6469024 Lake Home
8038 Lost Lake Road
Nisswa MN 56468



website: www.AffinityRealEstate.com | email: info@affinityrealestate.com | office: 218-237-3333 | fax: 218-237-3377



\$625,000
MLS 6469024 Lake Home
8038 Lost Lake Road
Nisswa MN 56468



website: www.AffinityRealEstate.com | email: info@affinityrealestate.com | office: 218-237-3333 | fax: 218-237-3377



\$625,000

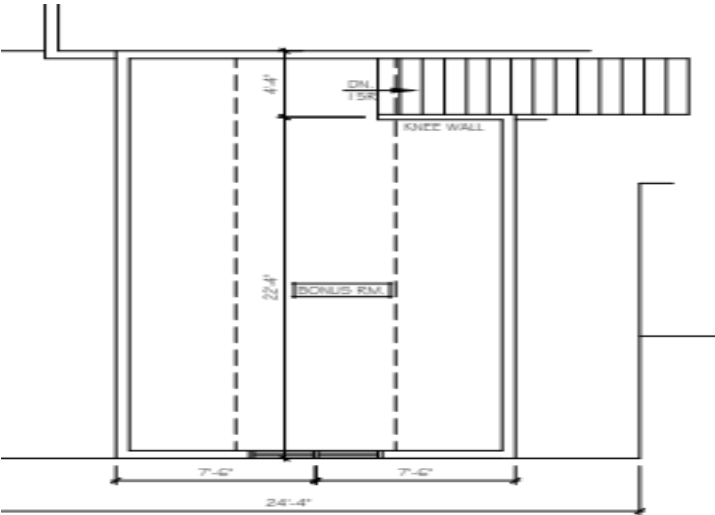
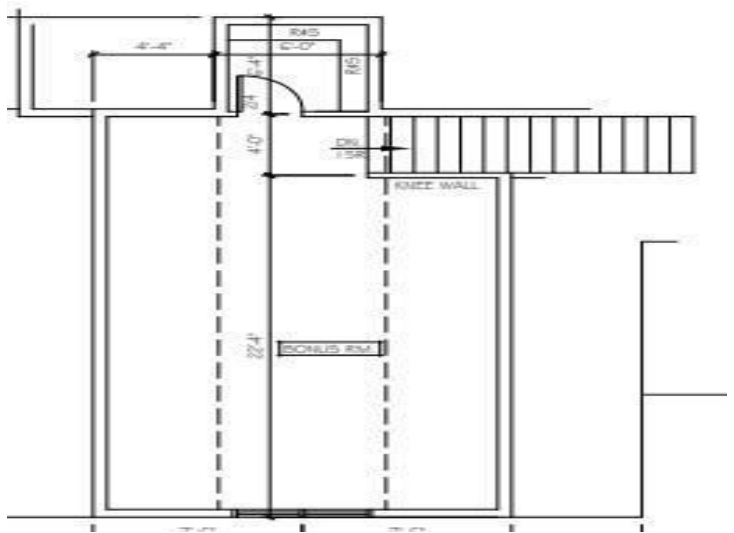
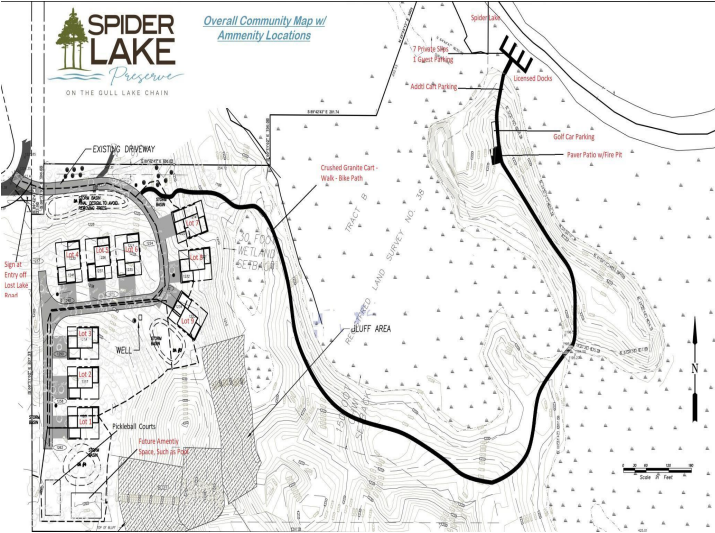
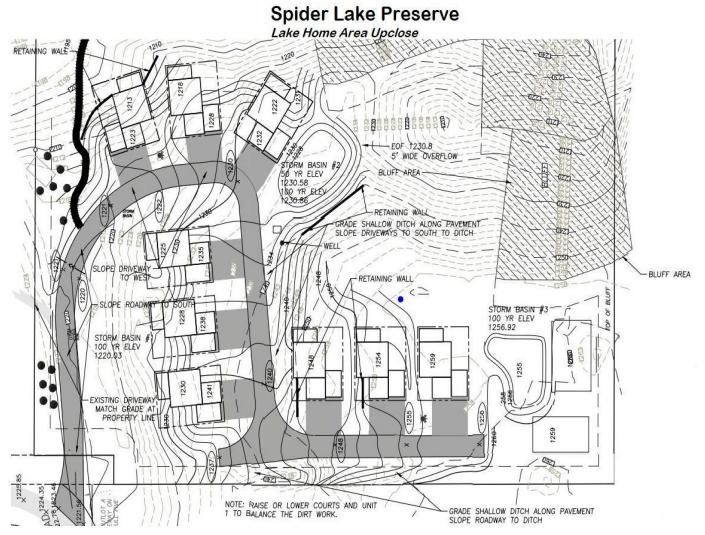
MLS 6469024 Lake Home
8038 Lost Lake Road
Nisswa MN 56468



website: www.AffinityRealEstate.com | email: info@affinityrealestate.com | office: 218-237-3333 | fax: 218-237-3377



\$625,000
MLS 6469024 Lake Home
8038 Lost Lake Road
Nisswa MN 56468



website: www.AffinityRealEstate.com | email: info@affinityrealestate.com | office: 218-237-3333 | fax: 218-237-3377

Affinity
REAL ESTATE INC

\$625,000
MLS 6469024 Lake Home
8038 Lost Lake Road
Nisswa MN 56468