



MLS 6470342 Land

\$439,900

170.58 Acres
Raw Land

TBD Coneflower Lane
Pine River MN 56474

Status: Hold

Description:

A little slice of heaven on earth, this hunting land may be the one you've been searching for. 170 acres of pure Minnesota land boasting everything from rolling hills to oak trees, diamond willows, birch, scattered wetlands, and even a creek to cross! Quality deer to turkey, bear, grouse, ducks, and so much more flourishes here in this untouched raw chunk of land. Located just northeast of Pine River, you'll be minutes from your new base camp with years of memories to come! 4 steel octagon deer stands to be set up in locations of buyers' choice. The land is situated right on the Cass and Crow Wing Line! Multiple opportunities to split or develop for a buyer willing to put in the time. Must have a showing scheduled to view land.

Additional Details:

Lot Acres	170.58
Lot Dimensions	Irr. See Legal
School District	2174
Taxes	\$946
Taxes with Assessments	\$946
Tax Year	2023

Additional Features:

Driving Directions:

From CR 84 & 44, head North for 1 mile+/- . Take a right onto 18th St SW. Head East until you reach Coneflower lane SW on your right. Connect with agent for detailed access route.



Listed By:
Real Broker, LLC

Affinity Real Estate Inc. participates in the Regional Multiple Listing Service of Minnesota, Inc Broker Reciprocity (sm) program, allowing us to display other broker's listings on our website. All properties are subject to prior sale, change or withdrawal.



Call Affinity Real Estate

218-237-3333

info@affinityrealestate.com



Affinity Real Estate - 600 Park Avenue South - Park Rapids MN 56470



website: www.AffinityRealEstate.com | email: info@affinityrealestate.com | office: 218-237-3333 | fax: 218-237-3377



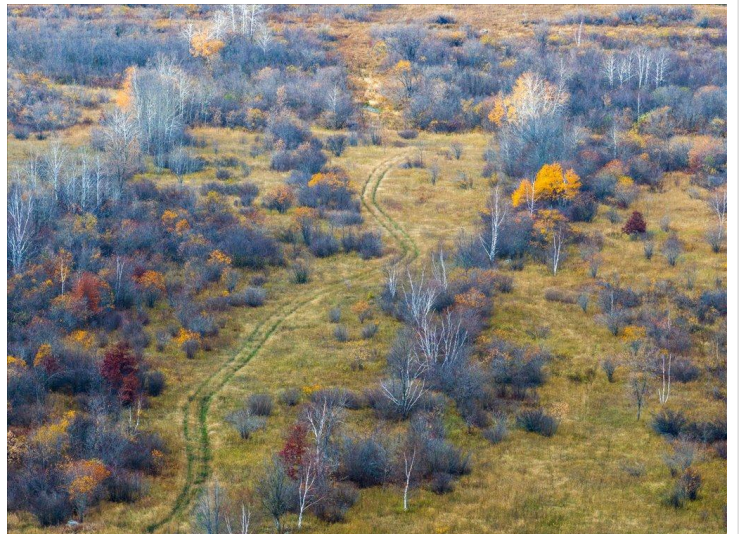
\$439,900
 MLS 6470342 Land
 TBD Coneflower Lane
 Pine River MN 56474



website: www.AffinityRealEstate.com | email: info@affinityrealestate.com | office: 218-237-3333 | fax: 218-237-3377



\$439,900
 MLS 6470342 Land
 TBD Coneflower Lane
 Pine River MN 56474



website: www.AffinityRealEstate.com | email: info@affinityrealestate.com | office: 218-237-3333 | fax: 218-237-3377



\$439,900
MLS 6470342 Land
TBD Coneflower Lane
Pine River MN 56474



website: www.AffinityRealEstate.com | email: info@affinityrealestate.com | office: 218-237-3333 | fax: 218-237-3377



\$439,900
 MLS 6470342 Land
 TBD Coneflower Lane
 Pine River MN 56474



website: www.AffinityRealEstate.com | email: info@affinityrealestate.com | office: 218-237-3333 | fax:218-237-3377



\$439,900
MLS 6470342 Land
TBD Coneflower Lane
Pine River MN 56474