



MLS 6472280 Lake Home

**\$590,000**

1,738 sq ft  
3 bedrooms  
2 baths

8038 Lost Lake Road  
Nisswa MN 56468

Waterfront: Spider Lake (Lake  
Shore City)

Status: Active

**Description:**

Spider Lake Preserve on the Gull Lake Chain is now open. Two homes are under construction, and one is viewable at 8038 Lost Lake Rd #120. Model Home Opens Mid January,. This community is a small & private single-family lake home community in the City of Lake Shore consisting of 9 Lake Homes. This 35-acre community is nestled amongst Lost Lake Lodge, Causeway on Gull, Bar Harbor, Zorbaz, golf courses, and so much more. This private community has its own dock area, lake side patio and firepit area, pickleball court, private crushed granite path system and fine homes built by Thomas Allen Homes. We have 7 home plans to consider. This single level has 3bd/2ba on one level. Starting @ \$590k with many other available options such as: 3rd stall garage, fireplace, ++ patio space, millwork pkgs, solid surface counters, many flooring options & more. Great private master suite and vaulted main room. (Pictures are of a similar home) Now's the time to secure your Gull Lake enjoyment in 2024!

**Additional Details:**

Year Built	2024
Lot Acres	0.12
Lot Dimensions	64x83 Build Pad
Garage Stalls	2
School District	181
Taxes	(unreported)
Taxes with Assessments	(unreported)
Tax Year	2024

**Additional Features:**

**Basement:** Block, Slab **Fuel:** Natural Gas **Garage:** 2 **Heat:** Forced Air **Sewer:** City Sewer/Connected **Water:** Shared System, Well **Air Conditioning:** Central Air

**Driving Directions:**

From Highway 371 in Nisswa, take Country Rd 77 West to Zorbaz. Turn Right on Lost Lake Road to Community on your right.



Listed By:  
Edina Realty, Inc.

Affinity Real Estate Inc. participates in the Regional Multiple Listing Service of Minnesota, Inc Broker Reciprocity (sm) program, allowing us to display other broker's listings on our website. All properties are subject to prior sale, change or withdrawal.



**Call Affinity Real Estate**

**218-237-3333**

**info@affinityrealestate.com**



**Affinity Real Estate - 600 Park Avenue South - Park Rapids MN 56470**





website: [www.AffinityRealEstate.com](http://www.AffinityRealEstate.com) | email: [info@affinityrealestate.com](mailto:info@affinityrealestate.com) | office: 218-237-3333 | fax: 218-237-3377



**\$590,000**  
 MLS 6472280 Lake Home  
 8038 Lost Lake Road  
 Nisswa MN 56468





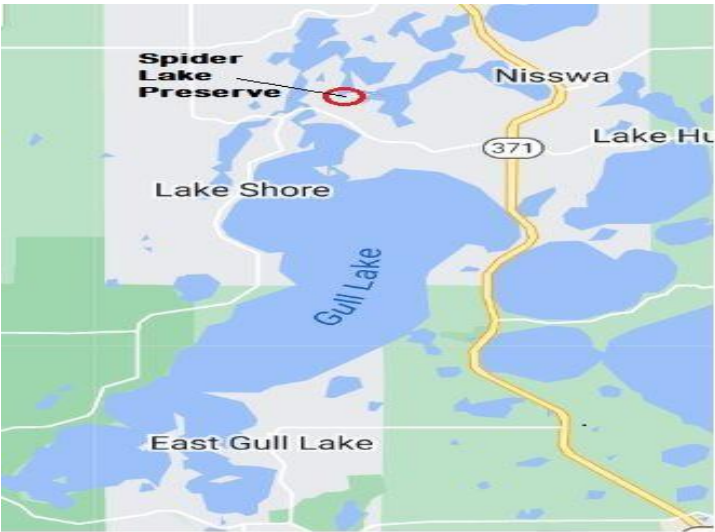
website: [www.AffinityRealEstate.com](http://www.AffinityRealEstate.com) | email: [info@affinityrealestate.com](mailto:info@affinityrealestate.com) | office: 218-237-3333 | fax: 218-237-3377



**\$590,000**

MLS 6472280 Lake Home  
8038 Lost Lake Road  
Nisswa MN 56468



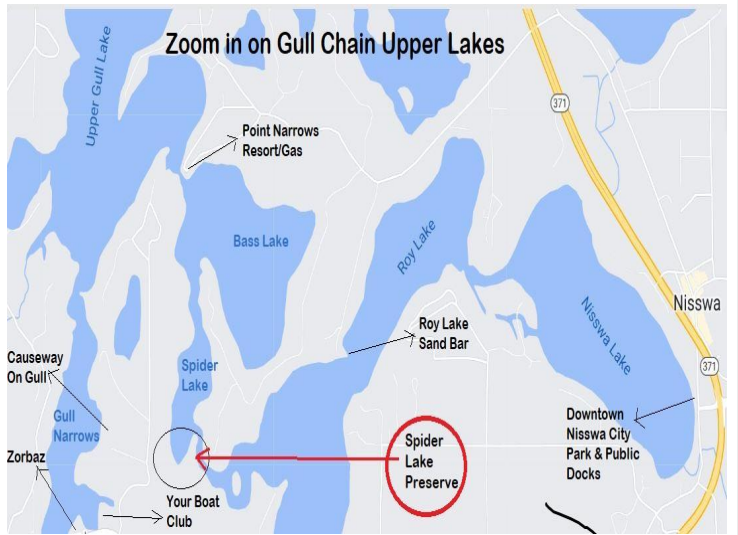


website: [www.AffinityRealEstate.com](http://www.AffinityRealEstate.com) | email: [info@affinityrealestate.com](mailto:info@affinityrealestate.com) | office: 218-237-3333 | fax: 218-237-3377



**\$590,000**  
 MLS 6472280 Lake Home  
 8038 Lost Lake Road  
 Nisswa MN 56468





website: [www.AffinityRealEstate.com](http://www.AffinityRealEstate.com) | email: [info@affinityrealestate.com](mailto:info@affinityrealestate.com) | office: 218-237-3333 | fax: 218-237-3377

**Affinity**  
REAL ESTATE INC

**\$590,000**  
MLS 6472280 Lake Home  
8038 Lost Lake Road  
Nisswa MN 56468





website: [www.AffinityRealEstate.com](http://www.AffinityRealEstate.com) | email: [info@affinityrealestate.com](mailto:info@affinityrealestate.com) | office: 218-237-3333 | fax: 218-237-3377



**\$590,000**

MLS 6472280 Lake Home  
8038 Lost Lake Road  
Nisswa MN 56468





website: [www.AffinityRealEstate.com](http://www.AffinityRealEstate.com) | email: [info@affinityrealestate.com](mailto:info@affinityrealestate.com) | office: 218-237-3333 | fax: 218-237-3377



**\$590,000**

MLS 6472280 Lake Home  
8038 Lost Lake Road  
Nisswa MN 56468





website: [www.AffinityRealEstate.com](http://www.AffinityRealEstate.com) | email: [info@affinityrealestate.com](mailto:info@affinityrealestate.com) | office: 218-237-3333 | fax: 218-237-3377



**\$590,000**  
 MLS 6472280 Lake Home  
 8038 Lost Lake Road  
 Nisswa MN 56468



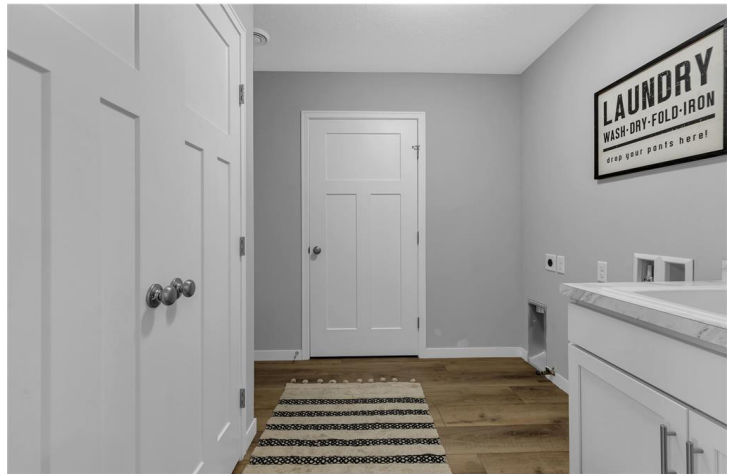


website: [www.AffinityRealEstate.com](http://www.AffinityRealEstate.com) | email: [info@affinityrealestate.com](mailto:info@affinityrealestate.com) | office: 218-237-3333 | fax: 218-237-3377



**\$590,000**  
 MLS 6472280 Lake Home  
 8038 Lost Lake Road  
 Nisswa MN 56468



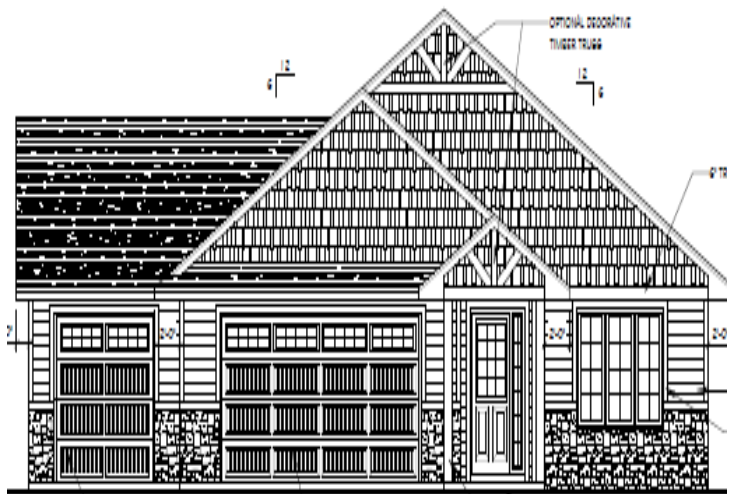


website: [www.AffinityRealEstate.com](http://www.AffinityRealEstate.com) | email: [info@affinityrealestate.com](mailto:info@affinityrealestate.com) | office: 218-237-3333 | fax: 218-237-3377



**\$590,000**  
MLS 6472280 Lake Home  
8038 Lost Lake Road  
Nisswa MN 56468



[illegible]

©2024 Acme Webwerks - Affinity Real Estate Inc - Licensed in Minnesota - Brochure v.2019.05.23.2 - 18.226.104.177 - 2024.05.14 17:16:35