



MLS 6472955 Land

\$124,900

3.66 Acres
Raw Land

XXXX Father Foley Drive
Pine River MN 56472

Status: Active

Description:

Attention all land enthusiasts and nature lovers! We are thrilled to present a once-in-a-lifetime opportunity to own a piece of pristine paradise located just across from the breathtaking Lower White Fish Lake. This rare gem of land is now available for sale, promising an idyllic setting that will capture your heart and imagination. If you're seeking a serene & peaceful escape from the hustle and bustle of city life, look no further. Immerse yourself in the tranquility of nature, surrounded by mature trees, gentle breezes, and the enchanting ambiance of the lake. Create your own private retreat or develop a dream vacation home to savor precious moments with family and friends. With its prime location and scarcity of available land in the area, this property represents an exceptional investment opportunity. Whether envision building your dream home, developing a vacation rental, or preserving the land for future generations, the potential for long-term value appreciation is undeniable.

Additional Details:

Lot Acres	3.66
Lot Dimensions	128x1242x128x1249
School District	2174
Taxes	\$100
Taxes with Assessments	\$96
Tax Year	2024

Additional Features:

Driving Directions:

From Crosslake take County Road 66 North, turn left onto County Road 1, go 3 miles, turn left onto County Road 134, go 1.4 miles, turn right onto Father Foley Drive and go about 2.2 miles to the property



Listed By:
Counselor Realty, Inc

Affinity Real Estate Inc. participates in the Regional Multiple Listing Service of Minnesota, Inc Broker Reciprocity (sm) program, allowing us to display other broker's listings on our website. All properties are subject to prior sale, change or withdrawal.



Call Affinity Real Estate

218-237-3333

info@affinityrealestate.com



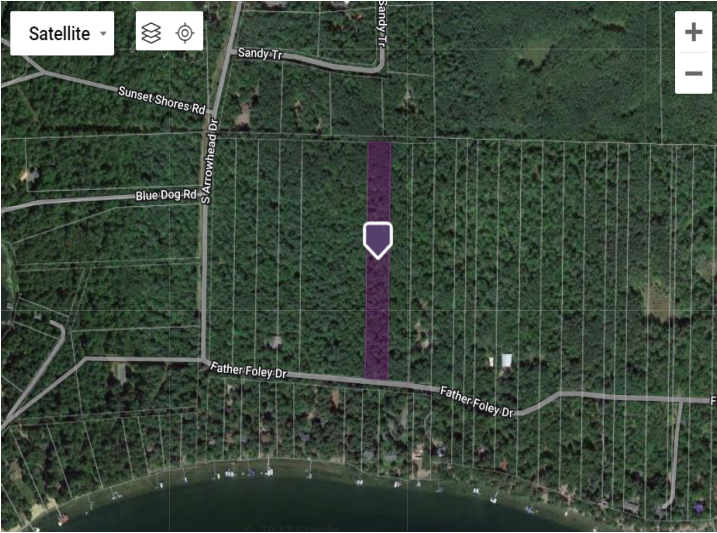
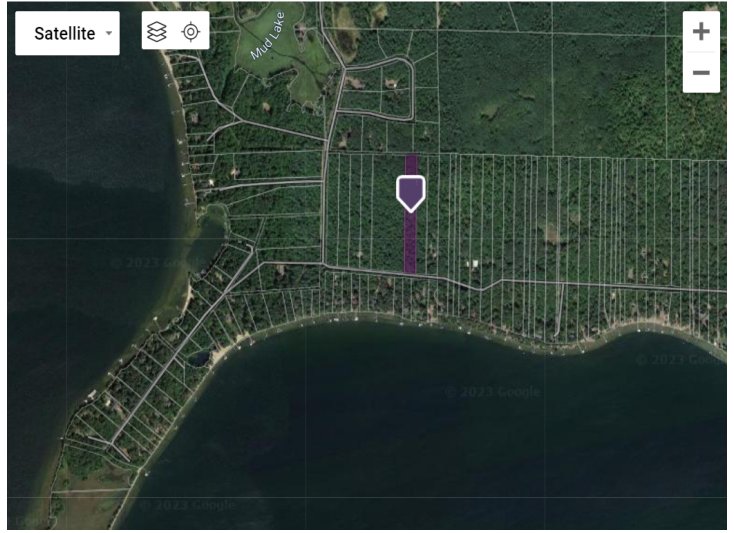
Affinity Real Estate - 600 Park Avenue South - Park Rapids MN 56470



website: www.AffinityRealEstate.com | email: info@affinityrealestate.com | office: 218-237-3333 | fax:218-237-3377



\$124,900
MLS 6472955 Land
XXXX Father Foley Drive
Pine River MN 56472



website: www.AffinityRealEstate.com | email: info@affinityrealestate.com | office: 218-237-3333 | fax:218-237-3377



\$124,900
MLS 6472955 Land
XXXX Father Foley Drive
Pine River MN 56472