



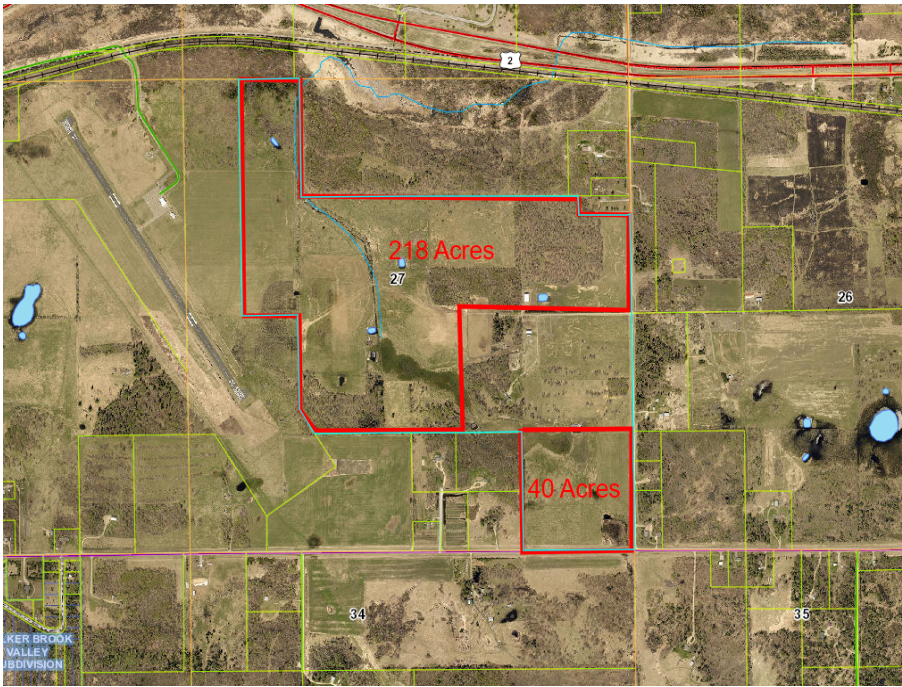
MLS 6473301 Land

\$633,400

258 Acres
Raw Land

TBD 211th Ave
Bagley MN 56621

Status: Pending



Description:

This conveniently located 258-acre parcel is ready for new ownership! Located only a couple miles south of Highway 2 between Bagley and Shevlin. Approximately 60 acres are tillable and approximately 198 acres of pasture, which is all fenced. Or, make some of it more tillable for your livestock. This farm has stock ponds and a 56x90 hay shed! *Land cannot close prior to the closing of MLS #6471455 (home with 60 acres), which is listed at \$588,500.00.

Additional Details:

Lot Acres	258
Lot Dimensions	irregular
School District	162
Taxes	\$1
Taxes with Assessments	\$1
Tax Year	2023

Additional Features:

Driving Directions:

Highway 2 west of Shevlin then left at 211th Ave (CoRd 91), property will be on the right.



Listed By:
Realty Experts, LLC

Affinity Real Estate Inc. participates in the Regional Multiple Listing Service of Minnesota, Inc Broker Reciprocity (sm) program, allowing us to display other broker's listings on our website. All properties are subject to prior sale, change or withdrawal.



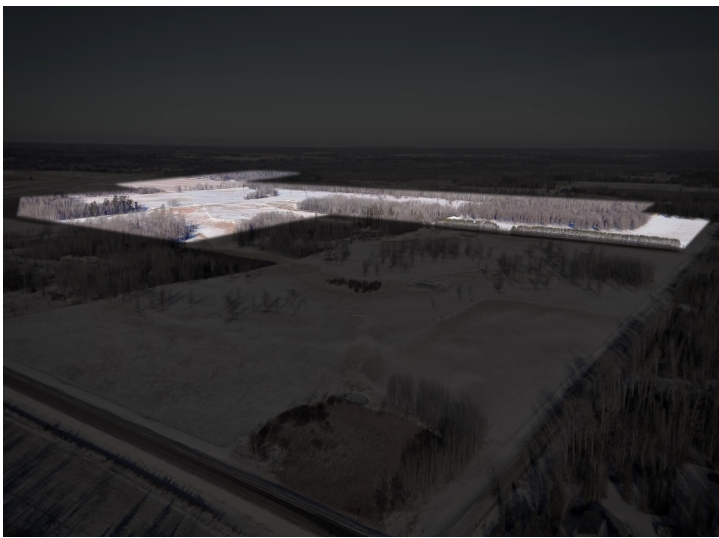
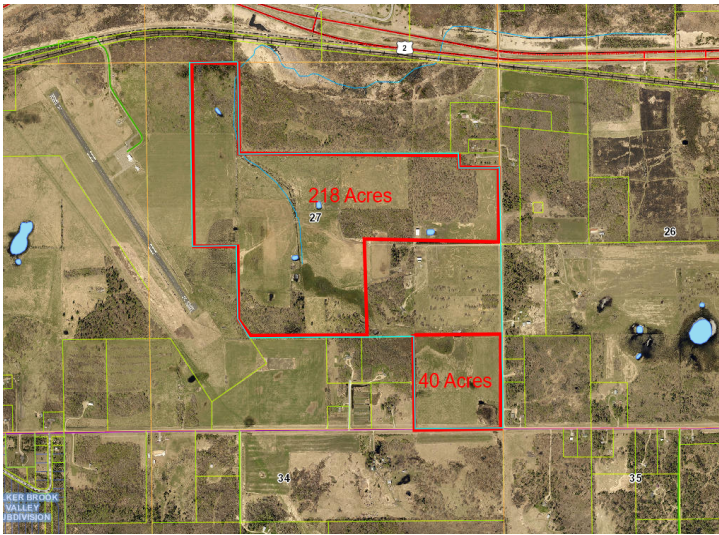
Call Affinity Real Estate

218-237-3333

info@affinityrealestate.com



Affinity Real Estate - 600 Park Avenue South - Park Rapids MN 56470



website: www.AffinityRealEstate.com | email: info@affinityrealestate.com | office: 218-237-3333 | fax:218-237-3377



\$633,400
MLS 6473301 Land
TBD 211th Ave
Bagley MN 56621



website: www.AffinityRealEstate.com | email: info@affinityrealestate.com | office: 218-237-3333 | fax:218-237-3377



\$633,400
MLS 6473301 Land
TBD 211th Ave
Bagley MN 56621



website: www.AffinityRealEstate.com | email: info@affinityrealestate.com | office: 218-237-3333 | fax:218-237-3377



\$633,400
MLS 6473301 Land
TBD 211th Ave
Bagley MN 56621