

MLS 6473445 Land

\$25,000

2.7 Acres
Raw Land

Tract 1 County 12
Akeley MN 56433

Status: Pending

Description:

It's easy to imagine the possibilities at this land lot. Find sanctuary tucked between the rolling hills and quiet rural area Walker and Akeley, MN. Great location close to Walker, golf courses, Leech Lake and surrounding lakes in the area. Are you looking to build a house, cabin, shouse or in need of a RB site? Additional parcel of vacant land available.

Additional Details:

Lot Acres	2.7
Lot Dimensions	296x539x234x477
School District	113
Taxes	\$223
Taxes with Assessments	\$223
Tax Year	2024

Additional Features:

Driving Directions:

From Walker, MN take County 12 NW (10th Street S in town by Jimmy's Restaurant) property is just south of fire #7641 on the right side of the road.



Listed By:
Your Home Sold Guaranteed Realty Exclusive

Affinity Real Estate Inc. participates in the Regional Multiple Listing Service of Minnesota, Inc Broker Reciprocity (sm) program, allowing us to display other broker's listings on our website. All properties are subject to prior sale, change or withdrawal.



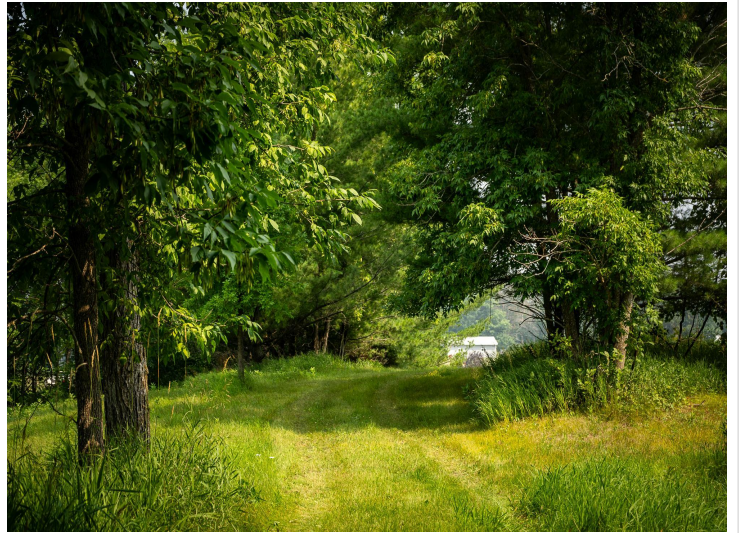
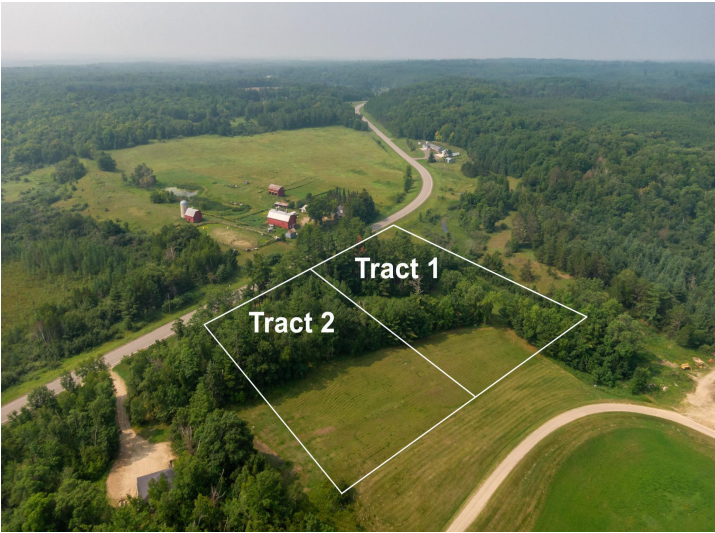
Call Affinity Real Estate

218-237-3333

info@affinityrealestate.com



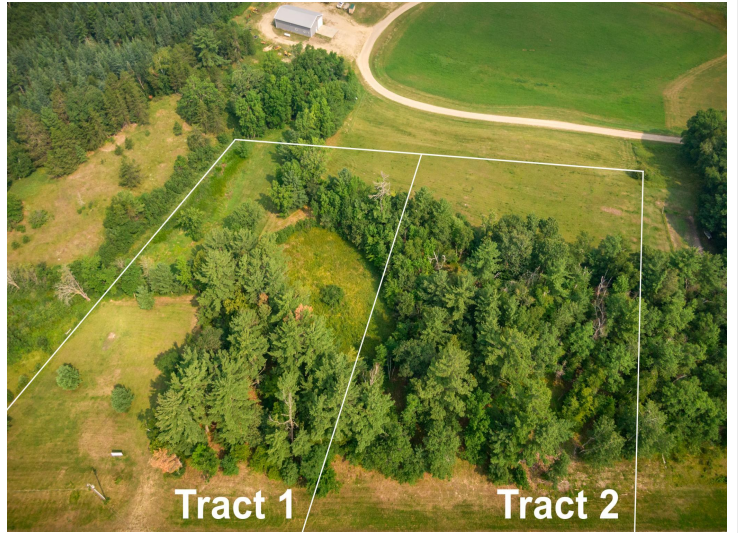
Affinity Real Estate - 600 Park Avenue South - Park Rapids MN 56470



website: www.AffinityRealEstate.com | email: info@affinityrealestate.com | office: 218-237-3333 | fax: 218-237-3377

Affinity
REAL ESTATE INC

\$25,000
MLS 6473445 Land
Tract 1 County 12
Akeley MN 56433



website: www.AffinityRealEstate.com | email: info@affinityrealestate.com | office: 218-237-3333 | fax:218-237-3377



\$25,000
MLS 6473445 Land
Tract 1 County 12
Akeley MN 56433