

MLS 6474311 Commercial Sale

\$130,000

Description:

OWN YOUR STORAGE UNIT!

To be built- Unit #10.

30' X 64' storage unit conveniently located between US Highway 59 & Co Highway 17 along South Melissa Drive. Great location less than a mile from Lake Melissa and Seven Sisters Spirits! Construction Specs: post type building, 3 Ply Columns, 2x6 – 8' OC, factory engineered trusses 4' OC (42-4-6 loading), 12' sidewalls with vaulted interior ceiling approx. 14'-8" at center, high tensile steel exterior, 24" soffit system w/ vented ridge, 12'x12' OH door w/ opener, (1) 3' service door, 4" concrete floor w/ center drain, 2x8 treated skirt board, 2x12 double top plate, 2x4 roof purlins 24" OC.

Additional Details:

Year Built	2023
Lot Acres	0.05
Lot Dimensions	32x70
Garage Stalls	2
School District	22
Taxes	\$882
Taxes with Assessments	\$942
Tax Year	2023

Additional Features:

Fuel: Other **Garage:** 2 **Heat:** None **Sewer:** None **Water:** None

Driving Directions:

From Detroit Lakes head South on Hwy 59 to S Melissa Dr. Property is on the corner.



Listed By:
Counselor Realty Detroit Lakes

Affinity Real Estate Inc. participates in the Regional Multiple Listing Service of Minnesota, Inc Broker Reciprocity (sm) program, allowing us to display other broker's listings on our website. All properties are subject to prior sale, change or withdrawal.



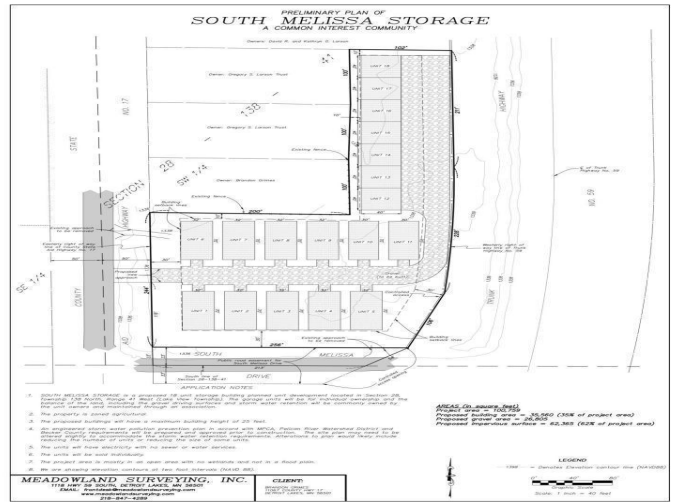
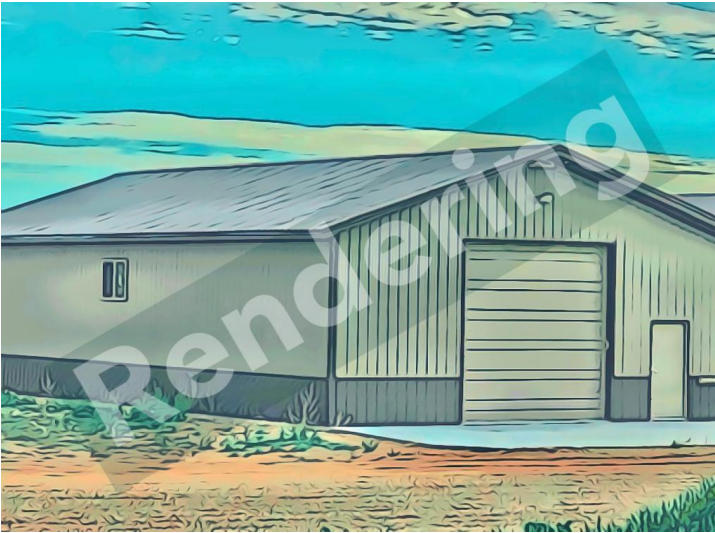
Call Affinity Real Estate

218-237-3333

info@affinityrealestate.com



Affinity Real Estate - 600 Park Avenue South - Park Rapids MN 56470



website: www.AffinityRealEstate.com | email: info@affinityrealestate.com | office: 218-237-3333 | fax:218-237-3377



\$130,000
MLS 6474311 Commercial
Sale
25296 Melissa Drive
Detroit Lakes MN 56501