



MLS 6474700 Residential

\$1,875,000

4,030 sq ft
6 bedrooms
4 baths

28419 220th Street
Shevlin MN 56676

Status: Active

Description:

Expansive Ranch with 2 homes, 276 rolling acres nestled entirely by hundreds of acres of state lands! Custom built with beauty and energy efficiency in mind. Many outbuildings! The stunning log home is a sight to behold. Its impressive features include vaulted ceilings, exposed beams, wrap around deck, stone fireplaces, 10 ft ceilings, in floor heat, walkout lower level, and high-quality materials that span the entire property. The kitchen is equipped with top-of-the-line maple cabinets, granite countertops, and a spacious center island. The surrounding area is known for its abundant wildlife and lush wooded land. The mature timber and pond provide a peaceful outdoor experience. Living on one level is entirely possible with the main laundry just off the kitchen! Bonus log cabin/guest house is 1200 sq/ft. Conveniently located just 40 minutes to Bemidji - a regional shopping and cultural hub. A great short term rental property, retreat center or wedding venue. Must see!

Additional Details:

Year Built	2010
Lot Acres	276
Lot Dimensions	3940x4100
Garage Stalls	2
School District	2311
Taxes	\$4,237
Taxes with Assessments	\$4,342
Tax Year	2023

Additional Features:

Fuel: Propane **Heat:** Forced Air, Radiant Floor

Driving Directions:

from Bemidji, US 71 s, turn right onto MN-197, Slight right onto US 2N, Left on Co 2, Left onto 206th St., Left onto Clearline Rd..go to 220th St to property Please note substantial rolling hills to home.



Listed By:
Headwaters Realty Services LLC

Affinity Real Estate Inc. participates in the Regional Multiple Listing Service of Minnesota, Inc Broker Reciprocity (sm) program, allowing us to display other broker's listings on our website. All properties are subject to prior sale, change or withdrawal.



Call Affinity Real Estate

218-237-3333

info@affinityrealestate.com



Affinity Real Estate - 600 Park Avenue South - Park Rapids MN 56470



website: www.AffinityRealEstate.com | email: info@affinityrealestate.com | office: 218-237-3333 | fax:218-237-3377



\$1,875,000
MLS 6474700 Residential
28419 220th Street
Shevlin MN 56676



website: www.AffinityRealEstate.com | email: info@affinityrealestate.com | office: 218-237-3333 | fax:218-237-3377

Affinity
REAL ESTATE INC

\$1,875,000
MLS 6474700 Residential
28419 220th Street
Shevlin MN 56676



website: www.AffinityRealEstate.com | email: info@affinityrealestate.com | office: 218-237-3333 | fax:218-237-3377



\$1,875,000
MLS 6474700 Residential
28419 220th Street
Shevlin MN 56676



website: www.AffinityRealEstate.com | email: info@affinityrealestate.com | office: 218-237-3333 | fax:218-237-3377



\$1,875,000
MLS 6474700 Residential
28419 220th Street
Shevlin MN 56676



website: www.AffinityRealEstate.com | email: info@affinityrealestate.com | office: 218-237-3333 | fax:218-237-3377



\$1,875,000
MLS 6474700 Residential
28419 220th Street
Shevlin MN 56676



website: www.AffinityRealEstate.com | email: info@affinityrealestate.com | office: 218-237-3333 | fax: 218-237-3377

Affinity
REAL ESTATE INC

\$1,875,000
MLS 6474700 Residential
28419 220th Street
Shevlin MN 56676



website: www.AffinityRealEstate.com | email: info@affinityrealestate.com | office: 218-237-3333 | fax:218-237-3377



\$1,875,000
MLS 6474700 Residential
28419 220th Street
Shevlin MN 56676



website: www.AffinityRealEstate.com | email: info@affinityrealestate.com | office: 218-237-3333 | fax:218-237-3377



\$1,875,000
MLS 6474700 Residential
28419 220th Street
Shevlin MN 56676



website: www.AffinityRealEstate.com | email: info@affinityrealestate.com | office: 218-237-3333 | fax:218-237-3377



\$1,875,000
MLS 6474700 Residential
28419 220th Street
Shevlin MN 56676



website: www.AffinityRealEstate.com | email: info@affinityrealestate.com | office: 218-237-3333 | fax:218-237-3377

Affinity
REAL ESTATE INC

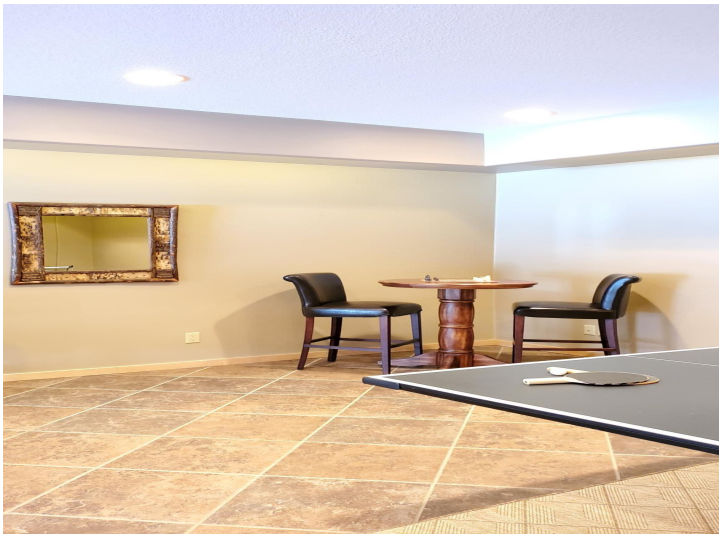
\$1,875,000
MLS 6474700 Residential
28419 220th Street
Shevlin MN 56676



website: www.AffinityRealEstate.com | email: info@affinityrealestate.com | office: 218-237-3333 | fax:218-237-3377

Affinity
REAL ESTATE INC

\$1,875,000
MLS 6474700 Residential
28419 220th Street
Shevlin MN 56676



website: www.AffinityRealEstate.com | email: info@affinityrealestate.com | office: 218-237-3333 | fax:218-237-3377



\$1,875,000
MLS 6474700 Residential
28419 220th Street
Shevlin MN 56676



website: www.AffinityRealEstate.com | email: info@affinityrealestate.com | office: 218-237-3333 | fax:218-237-3377



\$1,875,000
MLS 6474700 Residential
28419 220th Street
Shevlin MN 56676



website: www.AffinityRealEstate.com | email: info@affinityrealestate.com | office: 218-237-3333 | fax: 218-237-3377

Affinity
REAL ESTATE INC

\$1,875,000
MLS 6474700 Residential
28419 220th Street
Shevlin MN 56676



website: www.AffinityRealEstate.com | email: info@affinityrealestate.com | office: 218-237-3333 | fax:218-237-3377

Affinity
REAL ESTATE INC

\$1,875,000
MLS 6474700 Residential
28419 220th Street
Shevlin MN 56676



website: www.AffinityRealEstate.com | email: info@affinityrealestate.com | office: 218-237-3333 | fax:218-237-3377

Affinity
REAL ESTATE INC

\$1,875,000
MLS 6474700 Residential
28419 220th Street
Shevlin MN 56676



website: www.AffinityRealEstate.com | email: info@affinityrealestate.com | office: 218-237-3333 | fax:218-237-3377



\$1,875,000
MLS 6474700 Residential
28419 220th Street
Shevlin MN 56676



website: www.AffinityRealEstate.com | email: info@affinityrealestate.com | office: 218-237-3333 | fax: 218-237-3377

Affinity
REAL ESTATE INC

\$1,875,000
MLS 6474700 Residential
28419 220th Street
Shevlin MN 56676



website: www.AffinityRealEstate.com | email: info@affinityrealestate.com | office: 218-237-3333 | fax: 218-237-3377

Affinity
REAL ESTATE INC

\$1,875,000
MLS 6474700 Residential
28419 220th Street
Shevlin MN 56676



website: www.AffinityRealEstate.com | email: info@affinityrealestate.com | office: 218-237-3333 | fax:218-237-3377



\$1,875,000
MLS 6474700 Residential
28419 220th Street
Shevlin MN 56676