



MLS 6476290 Land

**\$179,900**

0.65 Acres  
Finished Lot(s)

485 Main Street  
Audubon MN 56511

Status: Active

**Description:**

(description unavailable)

**Additional Details:**

Lot Acres	0.65
Lot Dimensions	28314
School District	2889
Taxes	\$1,568
Taxes with Assessments	\$1,568
Tax Year	2023

**Additional Features:**

**Driving Directions:**

Take US Highway 10 to Audubon MN. Lot is on the North side of Hwy 10



Listed By:  
HomeSmart Adventure Realty

Affinity Real Estate Inc. participates in the Regional Multiple Listing Service of Minnesota, Inc Broker Reciprocity (sm) program, allowing us to display other broker's listings on our website. All properties are subject to prior sale, change or withdrawal.



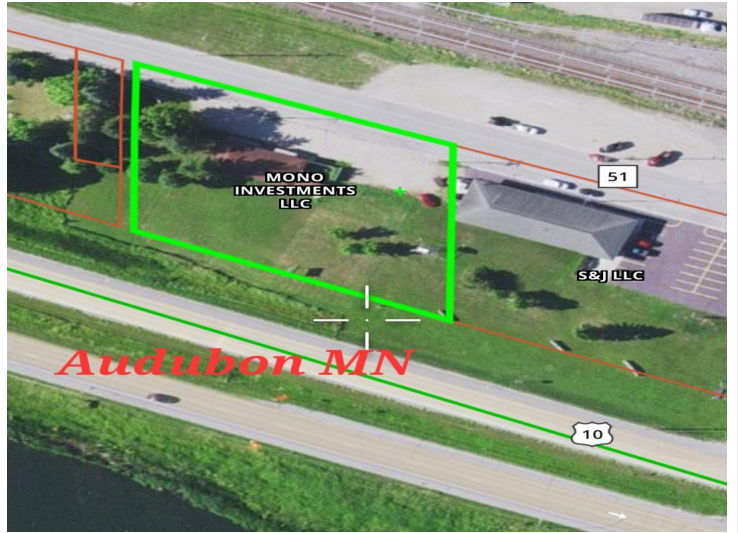
**Call Affinity Real Estate**

**218-237-3333**

**info@affinityrealestate.com**



**Affinity Real Estate - 600 Park Avenue South - Park Rapids MN 56470**



website: [www.AffinityRealEstate.com](http://www.AffinityRealEstate.com) | email: [info@affinityrealestate.com](mailto:info@affinityrealestate.com) | office: 218-237-3333 | fax: 218-237-3377



**\$179,900**  
MLS 6476290 Land  
485 Main Street  
Audubon MN 56511