



MLS 6476817 Land

\$29,999

3.15 Acres
Subdivided

738 Whisperwood Court
Bemidji MN 56601

Status: Pending

Description:

Discover a peaceful and beautiful setting at 738 Whisperwood Ct SW, Bemidji, MN. This 3.15 acre lot is partially wooded, creating a serene atmosphere. With plenty of space for privacy, this property is ideal for building your dream home in the heart of Minnesota.

Additional Details:

Lot Acres	3.15
Lot Dimensions	200x900
School District	31
Taxes	\$308
Taxes with Assessments	\$308
Tax Year	2024

Additional Features:

Driving Directions:

West on Division St to curve in road, left to stay on Division St, left on Whisperwood Ct.



Listed By:
CENTURY 21 Dickinson Realtors

Affinity Real Estate Inc. participates in the Regional Multiple Listing Service of Minnesota, Inc Broker Reciprocity (sm) program, allowing us to display other broker's listings on our website. All properties are subject to prior sale, change or withdrawal.



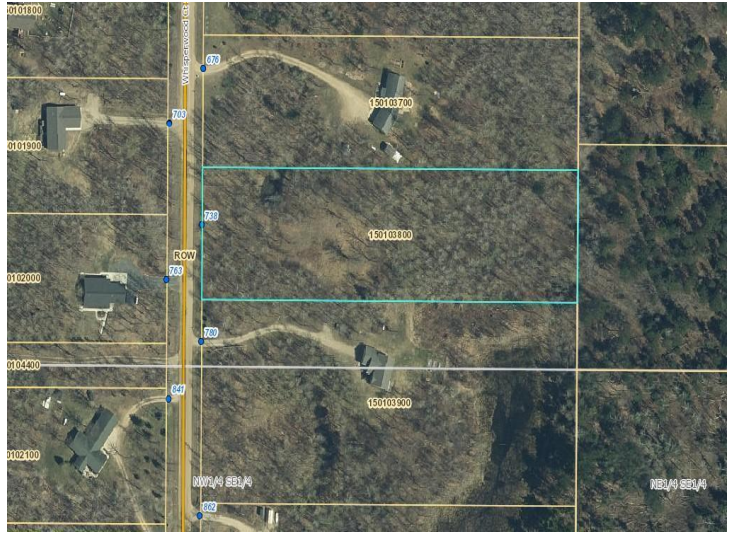
Call Affinity Real Estate

218-237-3333

info@affinityrealestate.com



Affinity Real Estate - 600 Park Avenue South - Park Rapids MN 56470



website: www.AffinityRealEstate.com | email: info@affinityrealestate.com | office: 218-237-3333 | fax: 218-237-3377



\$29,999
MLS 6476817 Land
738 Whisperwood Court
Bemidji MN 56601