



MLS 6477176 Lake Home

\$479,000

2,184 sq ft
3 bedrooms
2 baths

19123 Eiderdown Drive
Akeley MN 56433

Waterfront: Crystal Lake (White
Oak Twp.)

Status: Active

Description:

This private Crystal Lake property spans across 4.27 acres and features a 3-bed, 2-bath home with a walkout basement. The main floor offers a cozy living space, complemented with a Wilkening fireplace and a spacious kitchen with granite countertops. The lower level has a large family room with also a Wilkening fireplace and additional kitchen conveniences. The property includes a wrap around deck, detached garage with a heated bunk house/workshop, an additional one-car garage with an attached storage room, and an additional storage shed. The expansive grounds provide opportunities for outdoor activities and gardening. This property combines rural charm while offering a retreat-like lifestyle. Crystal Lake has great water clarity, therefore good fishing and swimming. Conveniently located 16 minutes to Hackensack or 11 minutes to Akeley.

Additional Details:

Year Built	1977
Lot Acres	4.27
Lot Dimensions	Irregular
Garage Stalls	3
School District	113
Taxes	\$2,944
Taxes with Assessments	\$3,144
Tax Year	2023

Additional Features:

Fuel: Electric, Propane **Heat:** Baseboard, Ductless Mini-Split, Fireplace(s)

Driving Directions:

From Park Rapids go East on Hwy 34 to Akeley. Take a right onto Hwy 64. Take a left onto 190th St. Eiderdown Drive will be on the left then the driveway will be on your left.



Listed By:
Keller Williams Realty Professionals

Affinity Real Estate Inc. participates in the Regional Multiple Listing Service of Minnesota, Inc Broker Reciprocity (sm) program, allowing us to display other broker's listings on our website. All properties are subject to prior sale, change or withdrawal.



Call Affinity Real Estate

218-237-3333

info@affinityrealestate.com



Affinity Real Estate - 600 Park Avenue South - Park Rapids MN 56470



website: www.AffinityRealEstate.com | email: info@affinityrealestate.com | office: 218-237-3333 | fax: 218-237-3377



\$479,000
 MLS 6477176 Lake Home
 19123 Eiderdown Drive
 Akeley MN 56433



website: www.AffinityRealEstate.com | email: info@affinityrealestate.com | office: 218-237-3333 | fax: 218-237-3377

Affinity
REAL ESTATE INC

\$479,000

MLS 6477176 Lake Home
19123 Eiderdown Drive
Akeley MN 56433



website: www.AffinityRealEstate.com | email: info@affinityrealestate.com | office: 218-237-3333 | fax: 218-237-3377



\$479,000
 MLS 6477176 Lake Home
 19123 Eiderdown Drive
 Akeley MN 56433



website: www.AffinityRealEstate.com | email: info@affinityrealestate.com | office: 218-237-3333 | fax: 218-237-3377

Affinity
REAL ESTATE INC

\$479,000
MLS 6477176 Lake Home
19123 Eiderdown Drive
Akeley MN 56433



website: www.AffinityRealEstate.com | email: info@affinityrealestate.com | office: 218-237-3333 | fax: 218-237-3377

Affinity
REAL ESTATE INC

\$479,000
MLS 6477176 Lake Home
19123 Eiderdown Drive
Akeley MN 56433



website: www.AffinityRealEstate.com | email: info@affinityrealestate.com | office: 218-237-3333 | fax: 218-237-3377



\$479,000
 MLS 6477176 Lake Home
 19123 Eiderdown Drive
 Akeley MN 56433



website: www.AffinityRealEstate.com | email: info@affinityrealestate.com | office: 218-237-3333 | fax: 218-237-3377



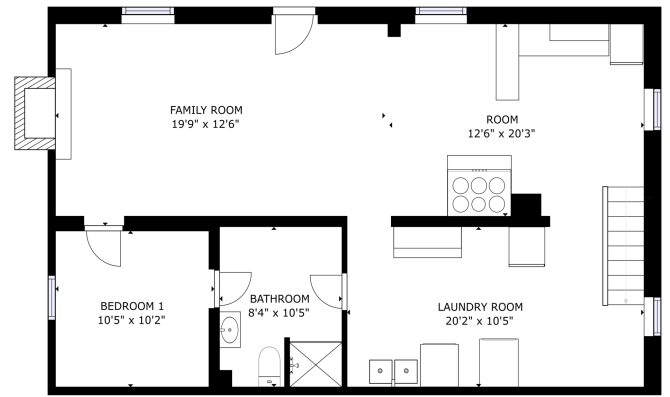
\$479,000
MLS 6477176 Lake Home
19123 Eiderdown Drive
Akeley MN 56433



website: www.AffinityRealEstate.com | email: info@affinityrealestate.com | office: 218-237-3333 | fax: 218-237-3377

Affinity
REAL ESTATE INC

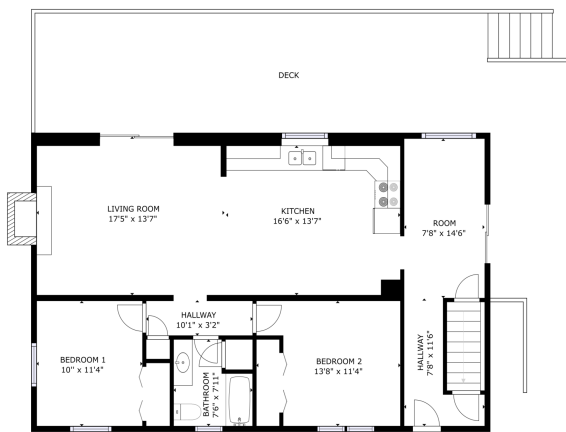
\$479,000
MLS 6477176 Lake Home
19123 Eiderdown Drive
Akeley MN 56433



FLOOR 1

GRAND TOTAL AREA
FLOOR 1: 100.00 SQ. FT. (100.00 SQ. FT.)
EXCLUDED AREA: GARAGE (17'0" x 10'0") 170.00 SQ. FT.
TOTAL: 170.00 SQ. FT.

Matterport



FLOOR 2

GRAND TOTAL AREA
FLOOR 2: 100.00 SQ. FT. (100.00 SQ. FT.)
EXCLUDED AREA: GARAGE (17'0" x 10'0") 170.00 SQ. FT.
TOTAL: 170.00 SQ. FT.

Matterport

website: www.AffinityRealEstate.com | email: info@affinityrealestate.com | office: 218-237-3333 | fax: 218-237-3377

Affinity
REAL ESTATE INC

\$479,000
MLS 6477176 Lake Home
19123 Eiderdown Drive
Akeley MN 56433