



MLS 6477376 Lake Home

\$899,900

2,184 sq ft
3 bedrooms
2 baths

27303 Island Trail
Park Rapids MN 56470

Waterfront: Island Lake (Arago
Twp.)

Status: Active

Description:

Unique private setting within 100 feet of the water's edge on Island Lake! The home features a main level master bedroom with ensuite bath, laundry, and walk-in closet. It also has two upstairs bedrooms and a basement with ample storage. Large windows with a lake view brighten the open living area and spacious kitchen. Island Lake, part of the Potato Lake chain, is known for excellent fishing and recreation. The property exhibits a level lot, sandy beach with a firepit, lakeside fish cleaning/storage building and 2 garden spots. Includes a 45' x 32' pole barn suitable for an RV, a 40'x 26' 3-car garage with carport, RV and hot tub hookups, and an asphalt driveway. Situated halfway between Park Rapids and Itasca State Park, you are close to ATV trails, public land, a golf course, and restaurants. The 5.53 acres can be split into parcels. Whether you're looking for year-round living, summer retreat, or a weekend escape, this lake home offers comfort, space, and natural beauty.

Additional Details:

Year Built	1908
Lot Acres	5.53
Lot Dimensions	Irregular
Garage Stalls	3
School District	309
Taxes	\$3,670
Taxes with Assessments	\$3,670
Tax Year	2023

Additional Features:

Basement: Block, Concrete, Partially Finished **Fuel:** Propane **Garage:** 3 **Heat:** Forced Air **Sewer:** Tank with Drainage Field **Water:** Drilled, Well
Air Conditioning: Window Unit(s)

Driving Directions:

North on US Hwy 71. Right onto Co Rd 89/ County 89. Left onto Island Lake Drive. Slight left onto Island Trail.



Listed By:
Keller Williams Realty Professionals

Affinity Real Estate Inc. participates in the Regional Multiple Listing Service of Minnesota, Inc Broker Reciprocity (sm) program, allowing us to display other broker's listings on our website. All properties are subject to prior sale, change or withdrawal.



Call Affinity Real Estate

218-237-3333

info@affinityrealestate.com



Affinity Real Estate - 600 Park Avenue South - Park Rapids MN 56470



website: www.AffinityRealEstate.com | email: info@affinityrealestate.com | office: 218-237-3333 | fax: 218-237-3377

Affinity
REAL ESTATE INC

\$899,900
MLS 6477376 Lake Home
27303 Island Trail
Park Rapids MN 56470



website: www.AffinityRealEstate.com | email: info@affinityrealestate.com | office: 218-237-3333 | fax: 218-237-3377

Affinity
REAL ESTATE INC

\$899,900
MLS 6477376 Lake Home
27303 Island Trail
Park Rapids MN 56470



website: www.AffinityRealEstate.com | email: info@affinityrealestate.com | office: 218-237-3333 | fax: 218-237-3377

Affinity
REAL ESTATE INC

\$899,900
MLS 6477376 Lake Home
27303 Island Trail
Park Rapids MN 56470



website: www.AffinityRealEstate.com | email: info@affinityrealestate.com | office: 218-237-3333 | fax: 218-237-3377

Affinity
REAL ESTATE INC

\$899,900
MLS 6477376 Lake Home
27303 Island Trail
Park Rapids MN 56470



website: www.AffinityRealEstate.com | email: info@affinityrealestate.com | office: 218-237-3333 | fax: 218-237-3377



\$899,900
 MLS 6477376 Lake Home
 27303 Island Trail
 Park Rapids MN 56470



website: www.AffinityRealEstate.com | email: info@affinityrealestate.com | office: 218-237-3333 | fax: 218-237-3377



\$899,900
MLS 6477376 Lake Home
27303 Island Trail
Park Rapids MN 56470



website: www.AffinityRealEstate.com | email: info@affinityrealestate.com | office: 218-237-3333 | fax: 218-237-3377

Affinity
REAL ESTATE INC

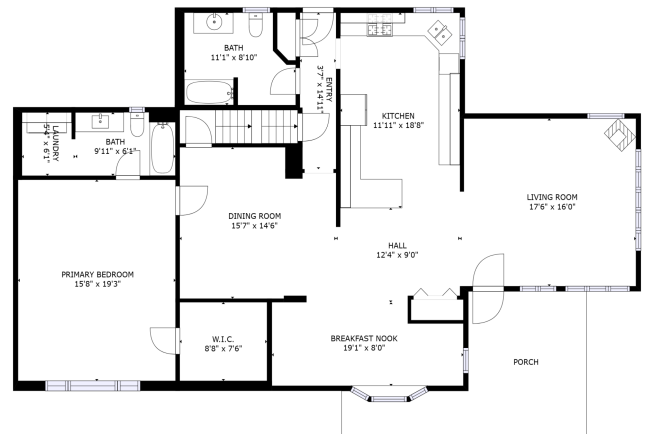
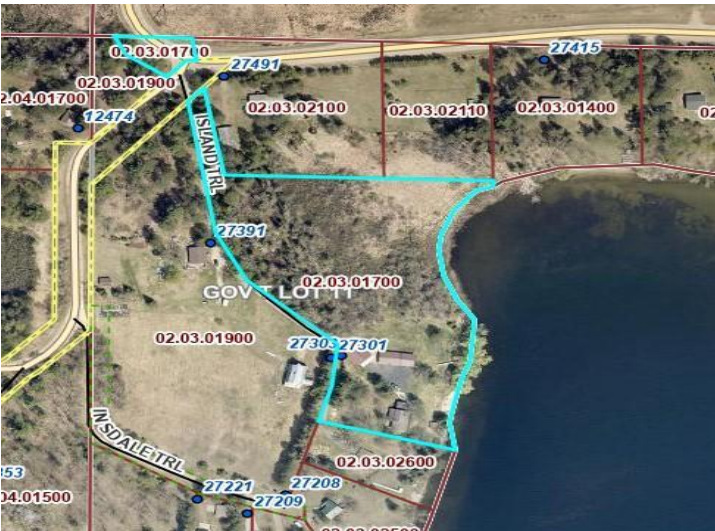
\$899,900
MLS 6477376 Lake Home
27303 Island Trail
Park Rapids MN 56470



website: www.AffinityRealEstate.com | email: info@affinityrealestate.com | office: 218-237-3333 | fax: 218-237-3377

Affinity
REAL ESTATE INC

\$899,900
MLS 6477376 Lake Home
27303 Island Trail
Park Rapids MN 56470

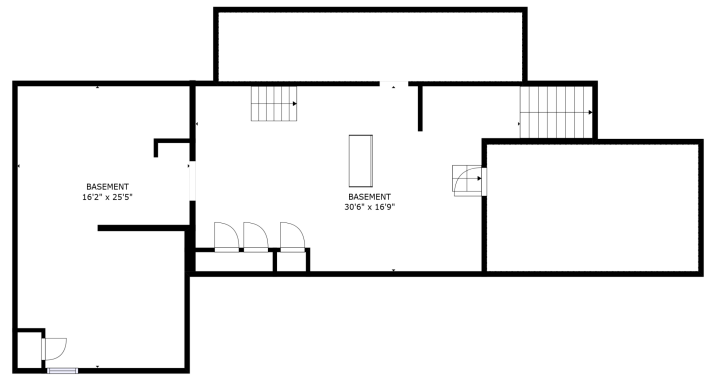
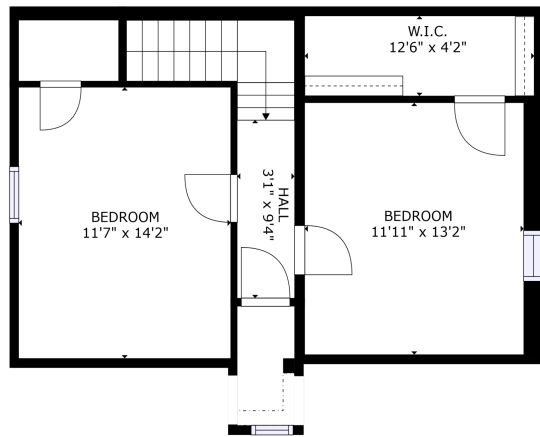


Matterport

website: www.AffinityRealEstate.com | email: info@affinityrealestate.com | office: 218-237-3333 | fax: 218-237-3377

Affinity
REAL ESTATE INC

\$899,900
MLS 6477376 Lake Home
27303 Island Trail
Park Rapids MN 56470



FLOOR 3

GROSS INTERNAL AREA
FLOOR 3: 142 sq. ft. FLOOR 3: 1427 sq. ft.
FLOOR 3: 497 sq. ft. EXCLUDED AREAS:
REDUCED HEADROOM BELOW 5'0": 424 sq. ft. PORCH: 211 sq. ft.
TOTAL: 3126 sq. ft.
SIZES AND DIMENSIONS ARE APPROXIMATE. ACTUAL MAY VARY.

Matterport

FLOOR 1

GROSS INTERNAL AREA
FLOOR 1: 142 sq. ft. FLOOR 3: 1427 sq. ft.
FLOOR 3: 497 sq. ft. EXCLUDED AREAS:
REDUCED HEADROOM BELOW 5'0": 424 sq. ft. PORCH: 211 sq. ft.
TOTAL: 3126 sq. ft.
SIZES AND DIMENSIONS ARE APPROXIMATE. ACTUAL MAY VARY.

Matterport

website: www.AffinityRealEstate.com | email: info@affinityrealestate.com | office: 218-237-3333 | fax: 218-237-3377



\$899,900
MLS 6477376 Lake Home
27303 Island Trail
Park Rapids MN 56470