



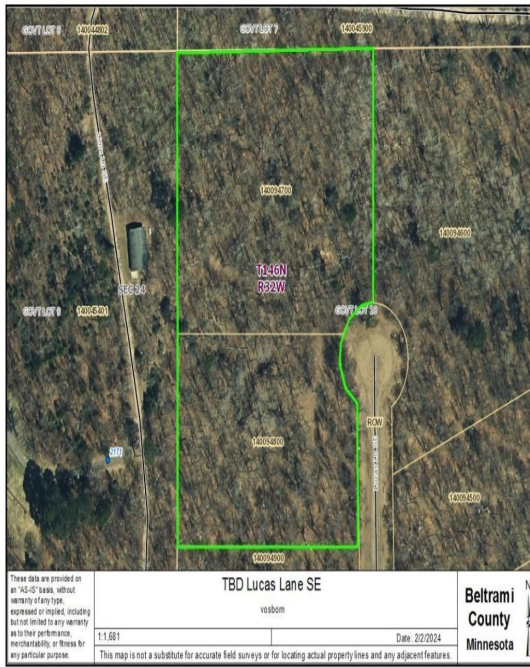
MLS 6477676 Land

\$58,900

4.8 Acres
Raw Land

TBD Lucas Lane
Bemidji MN 56601

Status: Closed



Description:

East of Bemidji, this wooded 4.8 acres is located in the heart of the Cass Lake Chain of Lakes. It is situated between Wolf Lake, Lake Andrusia and the Mississippi River in Fisher Bend plat putting you right in the middle of some of the best fishing in northern Minnesota.

These 2 parcels are covered in oak and birch and some poplar for good measure. Established trails wide enough for your ATV around the perimeter and through the property and deer tracks and trails abound. Covenants in place to protect your investment. Lack of leaves and snow right now make this a prime time to view the lay of the land ~ make an appointment, put on your boots, bring your thermos and come and take a look!

Additional Details:

Lot Acres	4.8
Lot Dimensions	375x590x340x590
School District	31
Taxes	\$292
Taxes with Assessments	\$292
Tax Year	2023

Additional Features:

Driving Directions:

From Bemidji: East on Roosevelt RD SE approx 9 mi to Damon DR SE, right on Damon. Follow Damon to Lucas Lane, right on Lucas Lane to the end.



Listed By:
Lake-N-Woods Realty, Inc.

Affinity Real Estate Inc. participates in the Regional Multiple Listing Service of Minnesota, Inc Broker Reciprocity (sm) program, allowing us to display other broker's listings on our website. All properties are subject to prior sale, change or withdrawal.



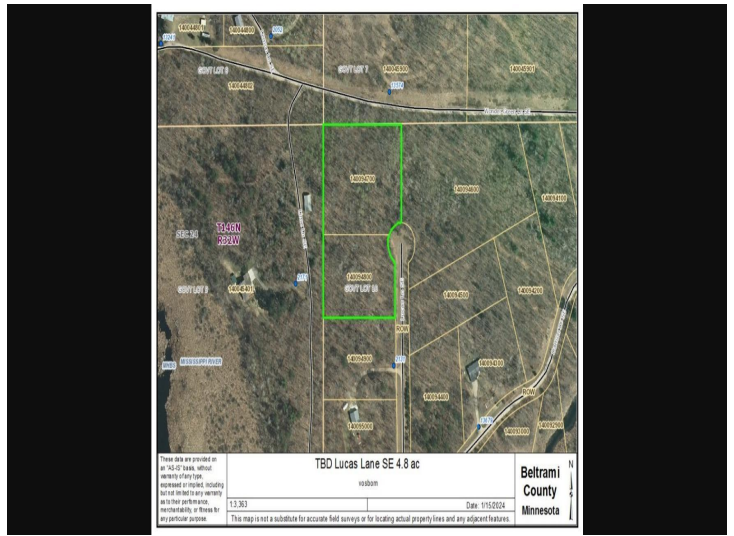
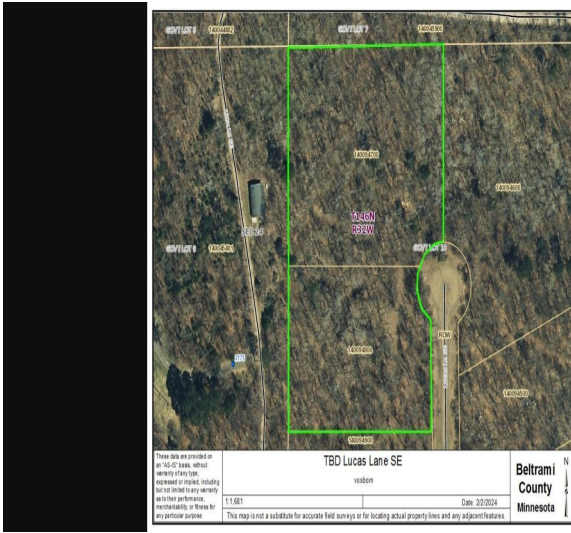
Call Affinity Real Estate

218-237-3333

info@affinityrealestate.com



Affinity Real Estate - 600 Park Avenue South - Park Rapids MN 56470



website: www.AffinityRealEstate.com | email: info@affinityrealestate.com | office: 218-237-3333 | fax: 218-237-3377



\$58,900
MLS 6477676 Land
TBD Lucas Lane
Bemidji MN 56601



website: www.AffinityRealEstate.com | email: info@affinityrealestate.com | office: 218-237-3333 | fax: 218-237-3377



\$58,900
MLS 6477676 Land
TBD Lucas Lane
Bemidji MN 56601