



MLS 6478010 Residential

\$550,000

3,844 sq ft
5 bedrooms
5 baths

2648 State 87
Backus MN 56435

Status: Hold

Description:

Are you looking for a unique property or to locate your business to Northern Minnesota? Look no further, this property is located in the heart of Lake Country. Big Portage Lake access is just a few blocks away and 100 different lakes within 20 minutes. This country setting has TWO homes, a business shop with office space, and an additional pole shed. The main home has 3 bedrooms and 3 bathrooms with a heat pump and an additional space to be finished. Guest home was set up for in-law quarters boosting an additional 2 bedrooms and 2 bathrooms with in-floor heat along with a gas fireplace to take the edge off. Handicap accessible. The pole shed is set up to store all your toys with an additional lean-to. The shop has an additional 3000 sq. ft. of heated space along with its own 1/2 bath and office space. See supplement for additional details. Currently was used for plumbing/heating company. Come take a look, you will not be disappointed!

Additional Details:

Year Built	1985
Lot Acres	5.85
Lot Dimensions	500x469x500x469
Garage Stalls	2
School District	2174
Taxes	\$2,498
Taxes with Assessments	\$2,564
Tax Year	2023

Additional Features:

Basement: Block, Drain Tiled, Partially Finished **Fuel:** Electric, Propane **Garage:** 2 **Heat:** Dual, Forced Air, Heat Pump **Sewer:** Private Sewer
Water: Submersible - 4 Inch, Well **Air Conditioning:** Central Air

Driving Directions:

North of Backus at the junction of 371 and State Highway 87, head east approx. 4.2 miles to 2648 State 87, property on your left.



Listed By:
Bill Hansen Realty/Longville

Affinity Real Estate Inc. participates in the Regional Multiple Listing Service of Minnesota, Inc Broker Reciprocity (sm) program, allowing us to display other broker's listings on our website. All properties are subject to prior sale, change or withdrawal.



Call Affinity Real Estate

218-237-3333

info@affinityrealestate.com



Affinity Real Estate - 600 Park Avenue South - Park Rapids MN 56470



website: www.AffinityRealEstate.com | email: info@affinityrealestate.com | office: 218-237-3333 | fax: 218-237-3377

Affinity
REAL ESTATE INC

\$550,000
MLS 6478010 Residential
2648 State 87
Backus MN 56435



website: www.AffinityRealEstate.com | email: info@affinityrealestate.com | office: 218-237-3333 | fax: 218-237-3377

Affinity
REAL ESTATE INC

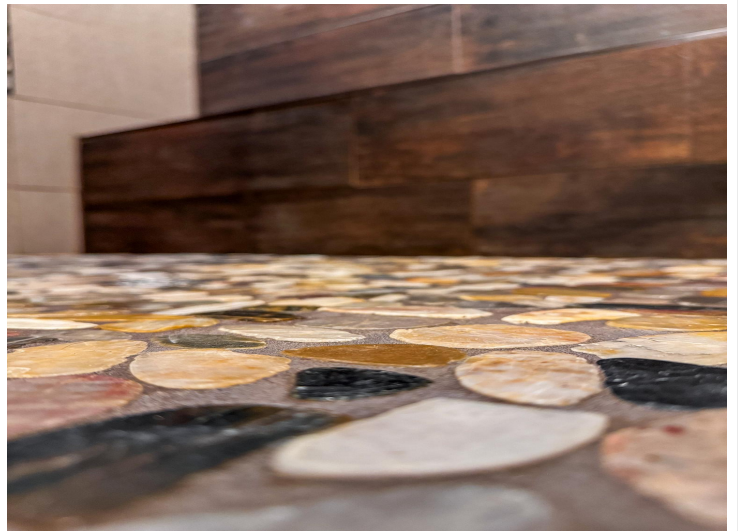
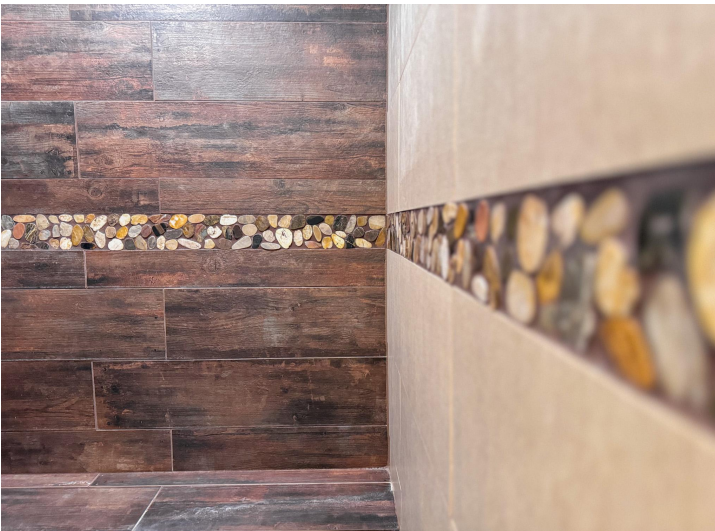
\$550,000
MLS 6478010 Residential
2648 State 87
Backus MN 56435



website: www.AffinityRealEstate.com | email: info@affinityrealestate.com | office: 218-237-3333 | fax: 218-237-3377



\$550,000
 MLS 6478010 Residential
 2648 State 87
 Backus MN 56435



website: www.AffinityRealEstate.com | email: info@affinityrealestate.com | office: 218-237-3333 | fax: 218-237-3377

Affinity
REAL ESTATE INC

\$550,000
MLS 6478010 Residential
2648 State 87
Backus MN 56435



website: www.AffinityRealEstate.com | email: info@affinityrealestate.com | office: 218-237-3333 | fax: 218-237-3377

Affinity
REAL ESTATE INC

\$550,000
MLS 6478010 Residential
2648 State 87
Backus MN 56435



website: www.AffinityRealEstate.com | email: info@affinityrealestate.com | office: 218-237-3333 | fax: 218-237-3377

Affinity
REAL ESTATE INC

\$550,000
MLS 6478010 Residential
2648 State 87
Backus MN 56435



website: www.AffinityRealEstate.com | email: info@affinityrealestate.com | office: 218-237-3333 | fax: 218-237-3377

Affinity
REAL ESTATE INC

\$550,000
MLS 6478010 Residential
2648 State 87
Backus MN 56435



website: www.AffinityRealEstate.com | email: info@affinityrealestate.com | office: 218-237-3333 | fax: 218-237-3377



\$550,000
 MLS 6478010 Residential
 2648 State 87
 Backus MN 56435



website: www.AffinityRealEstate.com | email: info@affinityrealestate.com | office: 218-237-3333 | fax: 218-237-3377



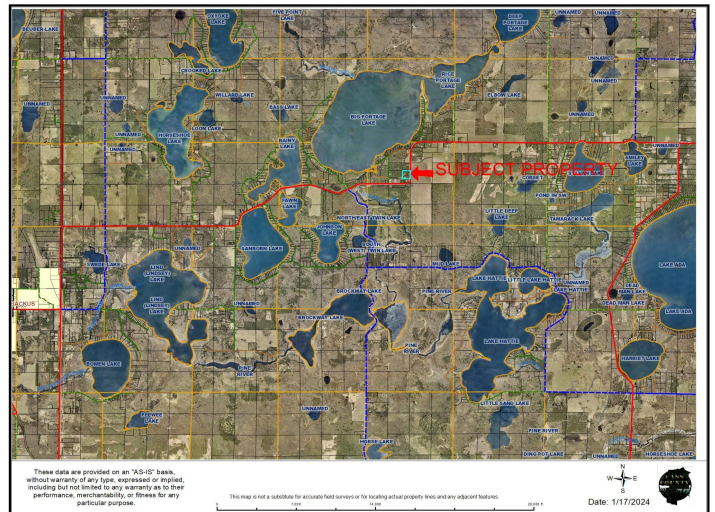
\$550,000
 MLS 6478010 Residential
 2648 State 87
 Backus MN 56435



website: www.AffinityRealEstate.com | email: info@affinityrealestate.com | office: 218-237-3333 | fax: 218-237-3377



\$550,000
 MLS 6478010 Residential
 2648 State 87
 Backus MN 56435



website: www.AffinityRealEstate.com | email: info@affinityrealestate.com | office: 218-237-3333 | fax: 218-237-3377

Affinity
REAL ESTATE INC

\$550,000
MLS 6478010 Residential
2648 State 87
Backus MN 56435



website: www.AffinityRealEstate.com | email: info@affinityrealestate.com | office: 218-237-3333 | fax: 218-237-3377

Affinity
REAL ESTATE INC

\$550,000
MLS 6478010 Residential
2648 State 87
Backus MN 56435



website: www.AffinityRealEstate.com | email: info@affinityrealestate.com | office: 218-237-3333 | fax: 218-237-3377



\$550,000
MLS 6478010 Residential
2648 State 87
Backus MN 56435