



MLS 6478432 Residential

**\$219,900**

1,632 sq ft  
3 bedrooms  
3 baths

1728 Canopy Lane  
Bemidji MN 56601

Status: Closed

**Description:**

Darling 3 bedroom, 2+ bath home on a large lot in a great location! This home features hardwood floors, large windows, 3 season porch, 3 bedrooms and a bath upstairs, half bath on the main and a partially finished basement with family room area, and a laundry area with a shower. Includes a double attached garage, fenced yard and a shed/barn.

**Additional Details:**

Year Built	1937
Lot Acres	2.76
Lot Dimensions	300x400
Garage Stalls	2
School District	31
Taxes	\$1,682
Taxes with Assessments	\$1,682
Tax Year	2023

**Additional Features:**

**Basement:** Partial, Partially Finished **Fuel:** Propane **Garage:** 2 **Heat:** Forced Air **Sewer:** Tank with Drainage Field **Water:** Submersible - 4 Inch  
**Air Conditioning:** None

**Driving Directions:**

Jefferson Ave to Canopy Ln



Listed By:  
218 Real Estate

Affinity Real Estate Inc. participates in the Regional Multiple Listing Service of Minnesota, Inc Broker Reciprocity (sm) program, allowing us to display other broker's listings on our website. All properties are subject to prior sale, change or withdrawal.



**Call Affinity Real Estate**

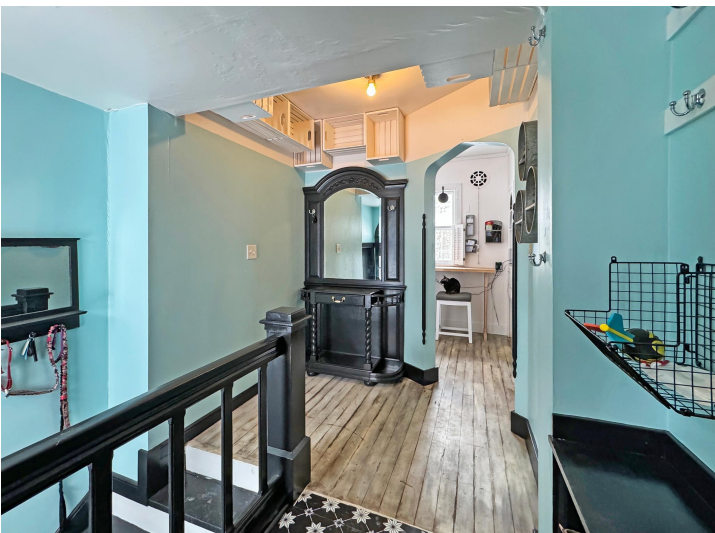
**218-237-3333**

**info@affinityrealestate.com**



**Affinity Real Estate - 600 Park Avenue South - Park Rapids MN 56470**





website: [www.AffinityRealEstate.com](http://www.AffinityRealEstate.com) | email: [info@affinityrealestate.com](mailto:info@affinityrealestate.com) | office: 218-237-3333 | fax: 218-237-3377

**Affinity**  
REAL ESTATE INC

**\$219,900**  
MLS 6478432 Residential  
1728 Canopy Lane  
Bemidji MN 56601





website: [www.AffinityRealEstate.com](http://www.AffinityRealEstate.com) | email: [info@affinityrealestate.com](mailto:info@affinityrealestate.com) | office: 218-237-3333 | fax: 218-237-3377



**\$219,900**  
 MLS 6478432 Residential  
 1728 Canopy Lane  
 Bemidji MN 56601





website: [www.AffinityRealEstate.com](http://www.AffinityRealEstate.com) | email: [info@affinityrealestate.com](mailto:info@affinityrealestate.com) | office: 218-237-3333 | fax: 218-237-3377



**\$219,900**  
 MLS 6478432 Residential  
 1728 Canopy Lane  
 Bemidji MN 56601





website: [www.AffinityRealEstate.com](http://www.AffinityRealEstate.com) | email: [info@affinityrealestate.com](mailto:info@affinityrealestate.com) | office: 218-237-3333 | fax: 218-237-3377

**Affinity**  
REAL ESTATE INC

**\$219,900**  
MLS 6478432 Residential  
1728 Canopy Lane  
Bemidji MN 56601





website: [www.AffinityRealEstate.com](http://www.AffinityRealEstate.com) | email: [info@affinityrealestate.com](mailto:info@affinityrealestate.com) | office: 218-237-3333 | fax: 218-237-3377



**\$219,900**  
MLS 6478432 Residential  
1728 Canopy Lane  
Bemidji MN 56601