



MLS 6478736 Residential

**\$429,000**

2,088 sq ft  
4 bedrooms  
2 baths

28853 Junco Drive  
Nevis MN 56467

Status: Pending

**Description:**

Escape to a secluded one-level living retreat on 40 acres north of Park Rapids! This 4-bed, 1.5-bath home invites tranquility with a winding private driveway, surrounded by a beautiful mixture of hardwood tree cover. The one level living with open layout seamlessly connects a well-appointed kitchen, huge pantry, dining, and living room with large windows and an attached 4 season porch.

Practicality meets versatility outside! Explore the expansive property to find a 36x48 heated shop and various other outbuildings including two open-air, 3-sided storage sheds, three additional sheds, and a bunkhouse that provide ample space for storage, hobbies, equipment, tools, or outdoor gear.

This 40-acre piece is ideal for deer hunting, featuring well-established trails, strategically placed stands, and convenient access to 100's of acres of public land. If you are looking for privacy and some elbow room- look no further!

**Additional Details:**

Year Built	1998
Lot Acres	40
Lot Dimensions	1335x1325
Garage Stalls	2
School District	308
Taxes	\$1,876
Taxes with Assessments	\$2,276
Tax Year	2023

**Additional Features:**

**Fuel:** Electric, Propane **Heat:** Boiler, Forced Air

**Driving Directions:**

From 71/34 in Park Rapids, East on 34 to a left onto 226 at Dorset Corner, 226 turns into County 7 then into County 91. Continue 12 miles to a left onto Junco Dr., follow for 1.6 miles to blue number and Driveway on Right.



Listed By:  
Keller Williams Realty Professionals

Affinity Real Estate Inc. participates in the Regional Multiple Listing Service of Minnesota, Inc Broker Reciprocity (sm) program, allowing us to display other broker's listings on our website. All properties are subject to prior sale, change or withdrawal.



**Call Affinity Real Estate**

**218-237-3333**

**info@affinityrealestate.com**



**Affinity Real Estate - 600 Park Avenue South - Park Rapids MN 56470**



website: [www.AffinityRealEstate.com](http://www.AffinityRealEstate.com) | email: [info@affinityrealestate.com](mailto:info@affinityrealestate.com) | office: 218-237-3333 | fax:218-237-3377

**Affinity**  
REAL ESTATE INC

**\$429,000**  
MLS 6478736 Residential  
28853 Junco Drive  
Nevis MN 56467



website: [www.AffinityRealEstate.com](http://www.AffinityRealEstate.com) | email: [info@affinityrealestate.com](mailto:info@affinityrealestate.com) | office: 218-237-3333 | fax: 218-237-3377

**Affinity**  
REAL ESTATE INC

**\$429,000**  
MLS 6478736 Residential  
28853 Junco Drive  
Nevis MN 56467



website: [www.AffinityRealEstate.com](http://www.AffinityRealEstate.com) | email: [info@affinityrealestate.com](mailto:info@affinityrealestate.com) | office: 218-237-3333 | fax: 218-237-3377

**Affinity**  
REAL ESTATE INC

**\$429,000**  
MLS 6478736 Residential  
28853 Junco Drive  
Nevis MN 56467



website: [www.AffinityRealEstate.com](http://www.AffinityRealEstate.com) | email: [info@affinityrealestate.com](mailto:info@affinityrealestate.com) | office: 218-237-3333 | fax:218-237-3377

**Affinity**  
REAL ESTATE INC

**\$429,000**  
MLS 6478736 Residential  
28853 Junco Drive  
Nevis MN 56467



website: [www.AffinityRealEstate.com](http://www.AffinityRealEstate.com) | email: [info@affinityrealestate.com](mailto:info@affinityrealestate.com) | office: 218-237-3333 | fax:218-237-3377

**Affinity**  
REAL ESTATE INC

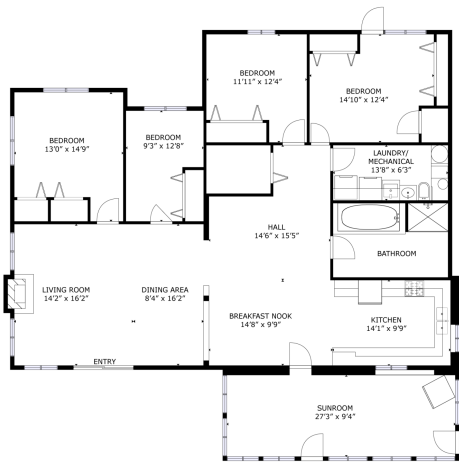
**\$429,000**  
MLS 6478736 Residential  
28853 Junco Drive  
Nevis MN 56467



website: [www.AffinityRealEstate.com](http://www.AffinityRealEstate.com) | email: [info@affinityrealestate.com](mailto:info@affinityrealestate.com) | office: 218-237-3333 | fax:218-237-3377

**Affinity**  
REAL ESTATE INC

**\$429,000**  
MLS 6478736 Residential  
28853 Junco Drive  
Nevis MN 56467



GROSS INTERNAL AREA  
TOTAL: 2088 sq. ft.  
(SIZE AND DIMENSIONS ARE APPROXIMATE, NOT TO SCALE)

FLOOR 1



website: [www.AffinityRealEstate.com](http://www.AffinityRealEstate.com) | email: [info@affinityrealestate.com](mailto:info@affinityrealestate.com) | office: 218-237-3333 | fax: 218-237-3377



**\$429,000**  
 MLS 6478736 Residential  
 28853 Junco Drive  
 Nevis MN 56467