



MLS 6479299 Lake Land

\$275,000

Description:

Exceptional find! Beautifully wooded lot on one of the area's premier lakes. If you are looking for privacy, this lot is perfect. It is big enough to build your dream home and have a guest home with 8.15 acres and 490 feet of lakeshore on Lower Bottle Lake.

Additional Details:

Lot Acres	8.15
Lot Dimensions	490x1200x385x830
School District	309
Taxes	\$1,670
Taxes with Assessments	\$1,852
Tax Year	2024

Additional Features:

Driving Directions:

From Hwys. 71/34 in Park Rapids. East on #34, turn left onto County 4 follow to Intrepid Rd. Turn Right onto Intrepid, Turn Right again onto Inglewood Dr to our sign.



Listed By:
Coldwell Banker Crown Realtors

Affinity Real Estate Inc. participates in the Regional Multiple Listing Service of Minnesota, Inc Broker Reciprocity (sm) program, allowing us to display other broker's listings on our website. All properties are subject to prior sale, change or withdrawal.



Call Affinity Real Estate

218-237-3333

info@affinityrealestate.com



Affinity Real Estate - 600 Park Avenue South - Park Rapids MN 56470



website: www.AffinityRealEstate.com | email: info@affinityrealestate.com | office: 218-237-3333 | fax: 218-237-3377



\$275,000

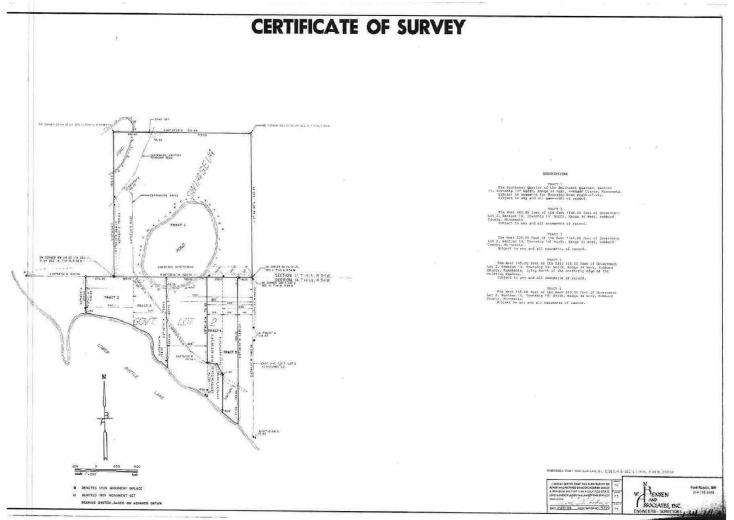
MLS 6479299 Lake Land
8.15 AC Inglewood Drive
Park Rapids MN 56470



website: www.AffinityRealEstate.com | email: info@affinityrealestate.com | office: 218-237-3333 | fax: 218-237-3377



\$275,000
MLS 6479299 Lake Land
8.15 AC Inglewood Drive
Park Rapids MN 56470



website: www.AffinityRealEstate.com | email: info@affinityrealestate.com | office: 218-237-3333 | fax:218-237-3377



\$275,000
 MLS 6479299 Lake Land
 8.15 AC Inglewood Drive
 Park Rapids MN 56470