



MLS 6480683 Lake Home

**\$539,000**

2,592 sq ft  
3 bedrooms  
3 baths

37105 Brietbach Road  
Park Rapids MN 56470

Waterfront: Unnamed Lake

Status: Active

#### Description:

Gaze across the backyard at a scene from a Jack London novel, a backdrop of tamarack pines and untouched lakes. Afternoon sun and hardwood sheen create a visually striking contrast that defines this impressive, sharp interior. A unique design, unobstructed flow and special features like the reading room loft set this home apart from so many others architecturally.

A finger of this property also juts over to the channel on Little Mantrap Lake for convenient access to that lake chain. Attached parking conveniently leads into the basement that includes a second fireplace, bathroom and tons of utility and storage space. A huge detached garage and separate pole building ensure more than enough space for extra vehicles, boats and RVs, right where they belong on this property. Several adjacent parcels directly on the channel are also available.

#### Additional Details:

Year Built	1992
Lot Acres	25
Lot Dimensions	Irregular
Garage Stalls	3
School District	309
Taxes	\$4,372
Taxes with Assessments	\$4,372
Tax Year	2023

#### Additional Features:

**Basement:** Walkout **Fuel:** Propane **Garage:** 3 **Heat:** Forced Air, Radiant Floor **Sewer:** Private Sewer, Septic System Compliant - Yes, Tank with Drainage Field **Water:** Submersible - 4 Inch, Drilled, Private, Well **Air Conditioning:** Central Air

#### Driving Directions:

From U.S. Highway 71, go west on County 46 or 2 miles, turn north onto Brietbach Road & go one mile. Take righthand fork in driveway to the house.



Listed By:  
Your Home Sold Guaranteed Realty Exclusive

Affinity Real Estate Inc. participates in the Regional Multiple Listing Service of Minnesota, Inc Broker Reciprocity (sm) program, allowing us to display other broker's listings on our website. All properties are subject to prior sale, change or withdrawal.



**Call Affinity Real Estate**

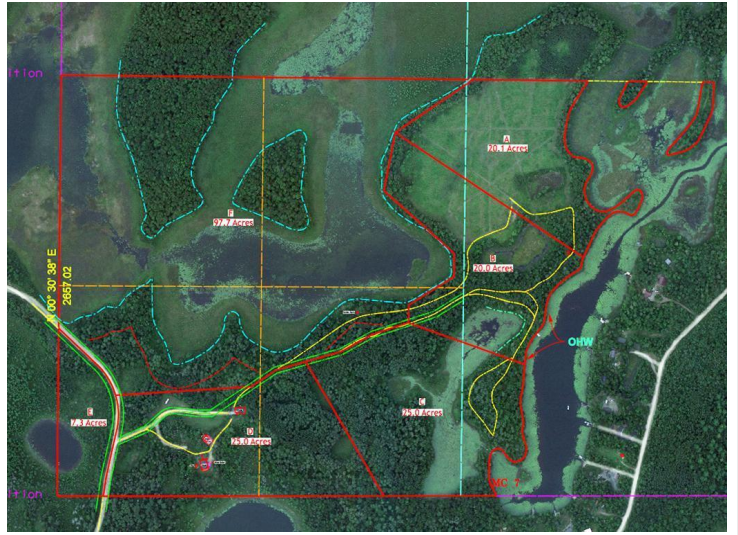
**218-237-3333**

**info@affinityrealestate.com**



**Affinity Real Estate - 600 Park Avenue South - Park Rapids MN 56470**





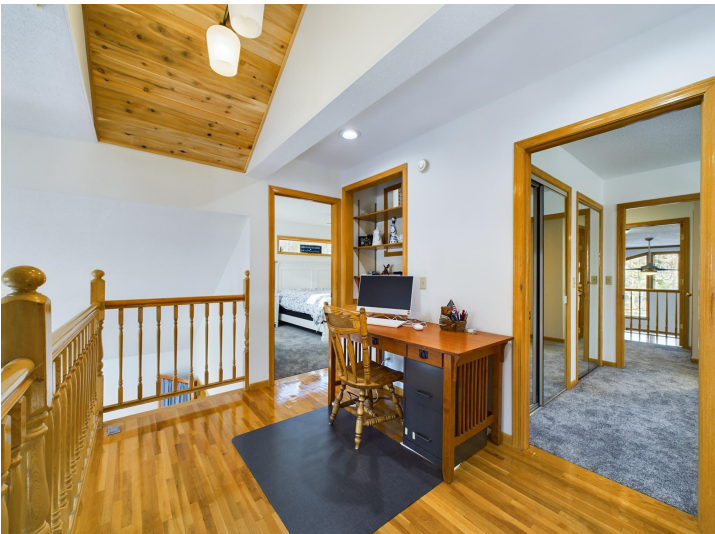
website: [www.AffinityRealEstate.com](http://www.AffinityRealEstate.com) | email: [info@affinityrealestate.com](mailto:info@affinityrealestate.com) | office: 218-237-3333 | fax: 218-237-3377



**\$539,000**

MLS 6480683 Lake Home  
37105 Brietbach Road  
Park Rapids MN 56470





website: [www.AffinityRealEstate.com](http://www.AffinityRealEstate.com) | email: [info@affinityrealestate.com](mailto:info@affinityrealestate.com) | office: 218-237-3333 | fax: 218-237-3377



**\$539,000**  
MLS 6480683 Lake Home  
37105 Brietbach Road  
Park Rapids MN 56470





website: [www.AffinityRealEstate.com](http://www.AffinityRealEstate.com) | email: [info@affinityrealestate.com](mailto:info@affinityrealestate.com) | office: 218-237-3333 | fax: 218-237-3377



**\$539,000**  
 MLS 6480683 Lake Home  
 37105 Brietbach Road  
 Park Rapids MN 56470





website: [www.AffinityRealEstate.com](http://www.AffinityRealEstate.com) | email: [info@affinityrealestate.com](mailto:info@affinityrealestate.com) | office: 218-237-3333 | fax: 218-237-3377

**Affinity**  
REAL ESTATE INC

**\$539,000**  
MLS 6480683 Lake Home  
37105 Brietbach Road  
Park Rapids MN 56470





website: [www.AffinityRealEstate.com](http://www.AffinityRealEstate.com) | email: [info@affinityrealestate.com](mailto:info@affinityrealestate.com) | office: 218-237-3333 | fax: 218-237-3377



**\$539,000**  
 MLS 6480683 Lake Home  
 37105 Brietbach Road  
 Park Rapids MN 56470





website: [www.AffinityRealEstate.com](http://www.AffinityRealEstate.com) | email: [info@affinityrealestate.com](mailto:info@affinityrealestate.com) | office: 218-237-3333 | fax: 218-237-3377

**Affinity**  
REAL ESTATE INC

**\$539,000**  
MLS 6480683 Lake Home  
37105 Brietbach Road  
Park Rapids MN 56470





website: [www.AffinityRealEstate.com](http://www.AffinityRealEstate.com) | email: [info@affinityrealestate.com](mailto:info@affinityrealestate.com) | office: 218-237-3333 | fax: 218-237-3377



**\$539,000**  
 MLS 6480683 Lake Home  
 37105 Brietbach Road  
 Park Rapids MN 56470





website: [www.AffinityRealEstate.com](http://www.AffinityRealEstate.com) | email: [info@affinityrealestate.com](mailto:info@affinityrealestate.com) | office: 218-237-3333 | fax: 218-237-3377



**\$539,000**  
 MLS 6480683 Lake Home  
 37105 Brietbach Road  
 Park Rapids MN 56470