



MLS 6481230 Lake Land

**\$249,000**

**Description:**

Experience Minnesota at the gateway to Little Mantrap Lake, where this waterfront acreage holds a plethora of woodsy surprises behind the shoreline.

With northern Minnesota forest and lakes as the canvas, this property weaves undulating hills, trails and shoreline into a painting. Lot A comprises a swath of grassy high ground carved by intersecting trails and improved wildlife habitat that meanders to the lake's edge. From here, a mesmerizing scene of craggy shoreline, peninsulas and islands leads out to greater Little Mantrap. Build your lakefront dream cabin or just revel in the untamed beauty where this lot is secluded yet accessible. The journey to your lakeside haven is as enchanting as the destination itself. What's more, two adjacent parcels are also available to create one massive spread, all along the channel.

**Additional Details:**

Lot Acres	20.1
Lot Dimensions	TBD
School District	309
Taxes	(unreported)
Taxes with Assessments	(unreported)
Tax Year	2023

**Additional Features:**

**Driving Directions:**

From U.S. Hwy 71, go west on County 46 for 2 miles, turn north onto Brietbach Road & go one mile. Take right hand fork. Follow arrow sign.



Listed By:  
Your Home Sold Guaranteed Realty Exclusive

Affinity Real Estate Inc. participates in the Regional Multiple Listing Service of Minnesota, Inc Broker Reciprocity (sm) program, allowing us to display other broker's listings on our website. All properties are subject to prior sale, change or withdrawal.



**Call Affinity Real Estate**

**218-237-3333**

**info@affinityrealestate.com**



**Affinity Real Estate - 600 Park Avenue South - Park Rapids MN 56470**





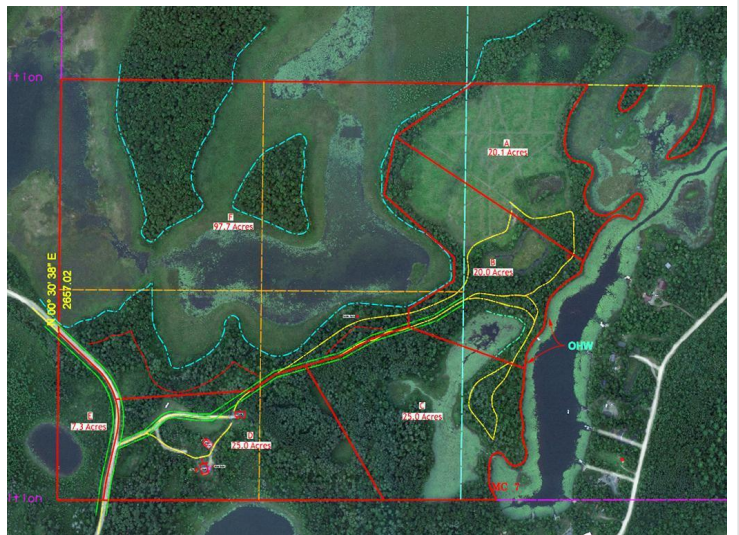
website: [www.AffinityRealEstate.com](http://www.AffinityRealEstate.com) | email: [info@affinityrealestate.com](mailto:info@affinityrealestate.com) | office: 218-237-3333 | fax: 218-237-3377



**\$249,000**

MLS 6481230 Lake Land  
Tract A Brietbach Road  
Park Rapids MN 56470





website: [www.AffinityRealEstate.com](http://www.AffinityRealEstate.com) | email: [info@affinityrealestate.com](mailto:info@affinityrealestate.com) | office: 218-237-3333 | fax: 218-237-3377



**\$249,000**

MLS 6481230 Lake Land  
Tract A Brietbach Road  
Park Rapids MN 56470





website: [www.AffinityRealEstate.com](http://www.AffinityRealEstate.com) | email: [info@affinityrealestate.com](mailto:info@affinityrealestate.com) | office: 218-237-3333 | fax: 218-237-3377



**\$249,000**  
 MLS 6481230 Lake Land  
 Tract A Brietbach Road  
 Park Rapids MN 56470





website: [www.AffinityRealEstate.com](http://www.AffinityRealEstate.com) | email: [info@affinityrealestate.com](mailto:info@affinityrealestate.com) | office: 218-237-3333 | fax: 218-237-3377



**\$249,000**  
MLS 6481230 Lake Land  
Tract A Brietbach Road  
Park Rapids MN 56470