



MLS 6481234 Lake Land

\$248,000

Description:

The gateway to Little Mantrap Lake beckons just beyond the shores of this lakefront lot with bonus access to a private cove. Relax under the tree canopy and appreciate a different kind of peace and silence in this northern Minnesota bliss. Existing trails make it easy to explore the property and scout the perfect cabin site or deer stands. Add even more land with 2 neighboring parcels available for one massive outdoor getaway on the lake.

Additional Details:

Lot Acres	25
Lot Dimensions	Irregular
School District	309
Taxes	(unreported)
Taxes with Assessments	(unreported)
Tax Year	2024

Additional Features:

Driving Directions:

From U.S. Hwy 71, go west on County 46 for 2 miles, turn north onto Brietbach Road & go one mile. Take right hand fork. Follow arrow sign.



Listed By:
Your Home Sold Guaranteed Realty Exclusive

Affinity Real Estate Inc. participates in the Regional Multiple Listing Service of Minnesota, Inc Broker Reciprocity (sm) program, allowing us to display other broker's listings on our website. All properties are subject to prior sale, change or withdrawal.



Call Affinity Real Estate

218-237-3333

info@affinityrealestate.com



Affinity Real Estate - 600 Park Avenue South - Park Rapids MN 56470



website: www.AffinityRealEstate.com | email: info@affinityrealestate.com | office: 218-237-3333 | fax:218-237-3377



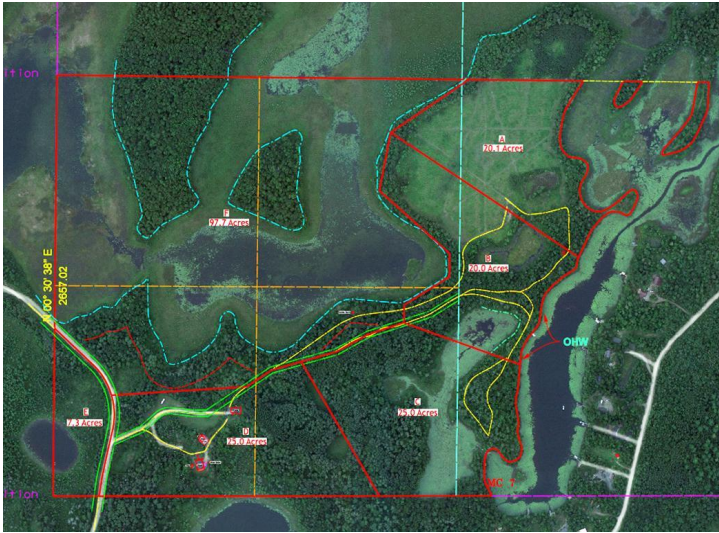
\$248,000
MLS 6481234 Lake Land
Tract C Brietbach Road
Park Rapids MN 56470



website: www.AffinityRealEstate.com | email: info@affinityrealestate.com | office: 218-237-3333 | fax:218-237-3377



\$248,000
MLS 6481234 Lake Land
Tract C Brietbach Road
Park Rapids MN 56470



website: www.AffinityRealEstate.com | email: info@affinityrealestate.com | office: 218-237-3333 | fax: 218-237-3377

Affinity
REAL ESTATE INC

\$248,000
MLS 6481234 Lake Land
Tract C Brietbach Road
Park Rapids MN 56470



website: www.AffinityRealEstate.com | email: info@affinityrealestate.com | office: 218-237-3333 | fax:218-237-3377



\$248,000

MLS 6481234 Lake Land
Tract C Brietbach Road
Park Rapids MN 56470