



MLS 6481358 Lake Home

**\$230,000**

864 sq ft  
3 bedrooms  
1 baths

23589 Great Ridge Trail  
Park Rapids MN 56470

Waterfront: Potato

Status: Hold

**Description:**

Sitting between the Norway pines is a cabin that brings calm and peace. Fire up the logs in the new fire pit, listen to the loons nearby the pristine Potato Lake, watch the white tail deer graze nearby and many birds in/out of the area. This cabin has been updated with new cabinets, counter top, sink, appliances (includes washer/dryer), water softener, bathroom vanity, freshly painted and all deck and boardwalk stained. Seller is converting a portion of the main floor living space into a third bedroom. This addition provides a convenient accessible main level bedroom and all on one level living. Also, you have access to an indoor pool year round, sauna, playground, and game room, and your own dock space gives you so many options for everyone to enjoy the "up north" feeling of Minnesota. Only a few miles from Itasca State Park and you can enjoy Park Rapids, MN events making your holiday and relaxation the best. It is a must see to appreciate all the amenities.

**Additional Details:**

Year Built	1990
Lot Acres	0.13
Lot Dimensions	70x80
School District	309
Taxes	\$982
Taxes with Assessments	\$1,182
Tax Year	2024

**Additional Features:**

**Fuel:** Propane **Heat:** Forced Air

**Driving Directions:**

From Hwys. 71/34 in Park Rapids. North on Hwy 71 to a right on 230th. Left on 141st Street to a right on Gazebo Drive. Follow to a left on Great Ridge Trail and #23589. No Signs on Property.



Listed By:  
Coldwell Banker Crown Realtors

Affinity Real Estate Inc. participates in the Regional Multiple Listing Service of Minnesota, Inc Broker Reciprocity (sm) program, allowing us to display other broker's listings on our website. All properties are subject to prior sale, change or withdrawal.



**Call Affinity Real Estate**

**218-237-3333**

**info@affinityrealestate.com**



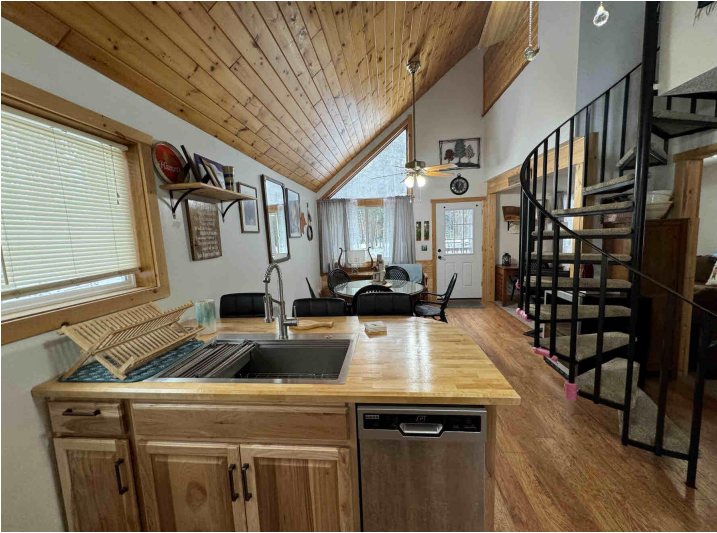
**Affinity Real Estate - 600 Park Avenue South - Park Rapids MN 56470**



website: [www.AffinityRealEstate.com](http://www.AffinityRealEstate.com) | email: [info@affinityrealestate.com](mailto:info@affinityrealestate.com) | office: 218-237-3333 | fax:218-237-3377



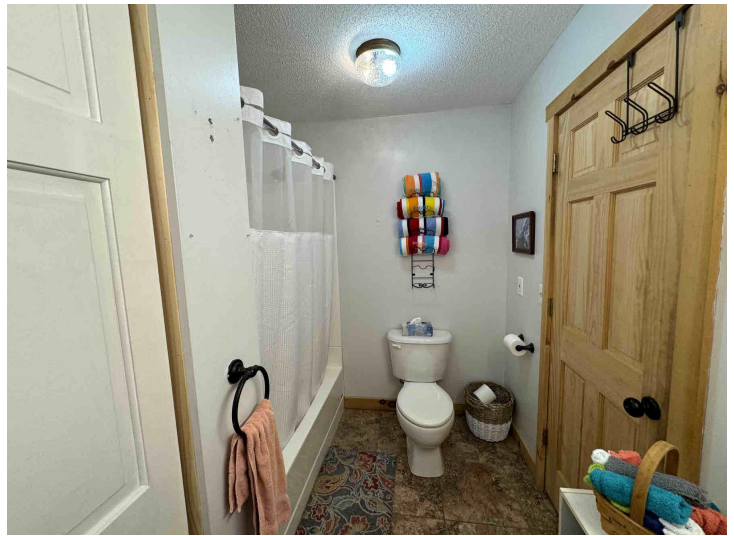
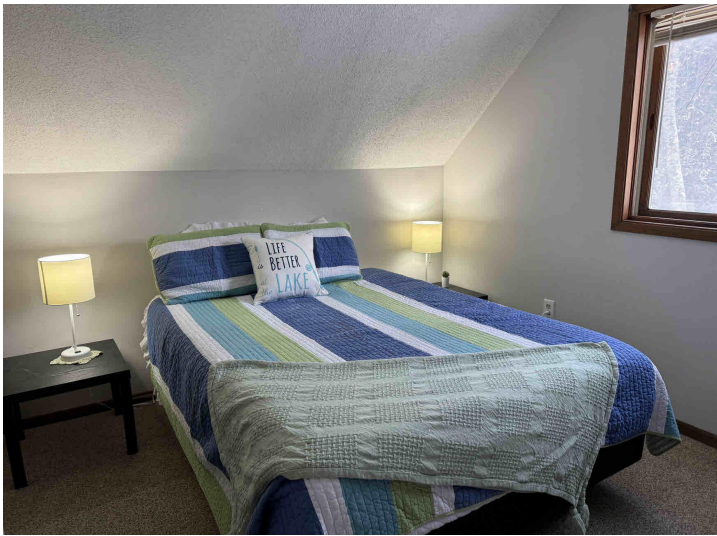
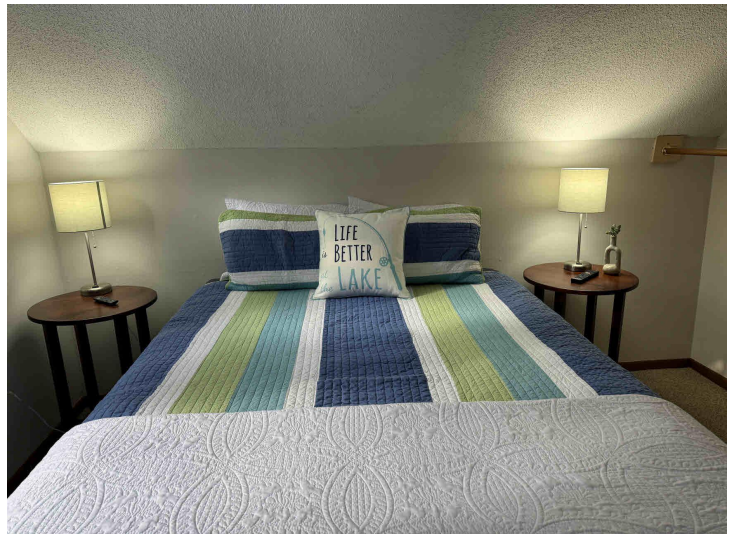
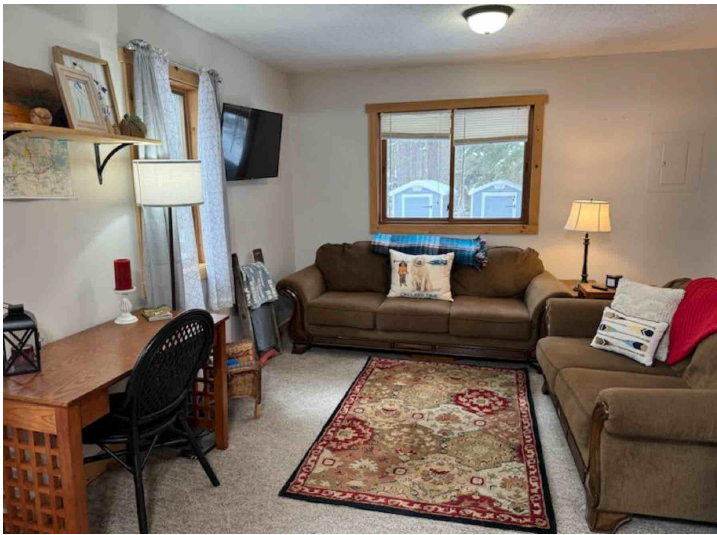
**\$230,000**  
MLS 6481358 Lake Home  
23589 Great Ridge Trail  
Park Rapids MN 56470



website: [www.AffinityRealEstate.com](http://www.AffinityRealEstate.com) | email: [info@affinityrealestate.com](mailto:info@affinityrealestate.com) | office: 218-237-3333 | fax: 218-237-3377

**Affinity**  
REAL ESTATE INC

**\$230,000**  
MLS 6481358 Lake Home  
23589 Great Ridge Trail  
Park Rapids MN 56470



website: [www.AffinityRealEstate.com](http://www.AffinityRealEstate.com) | email: [info@affinityrealestate.com](mailto:info@affinityrealestate.com) | office: 218-237-3333 | fax:218-237-3377

**Affinity**  
REAL ESTATE INC

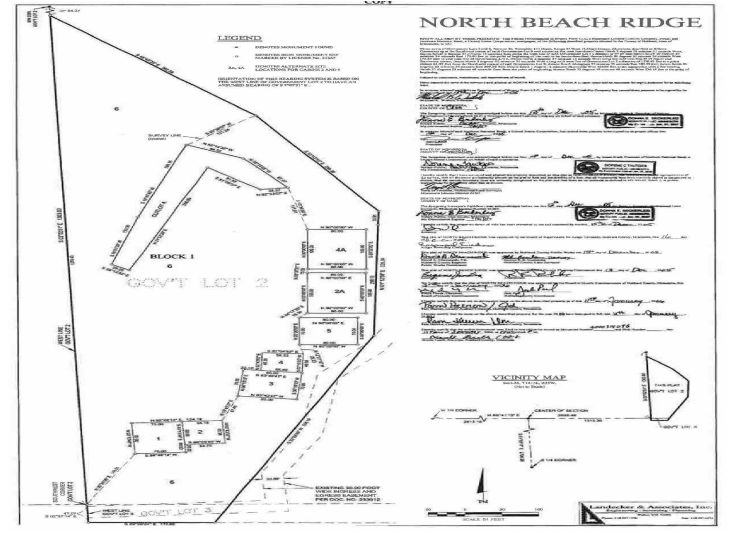
**\$230,000**  
MLS 6481358 Lake Home  
23589 Great Ridge Trail  
Park Rapids MN 56470



website: [www.AffinityRealEstate.com](http://www.AffinityRealEstate.com) | email: [info@affinityrealestate.com](mailto:info@affinityrealestate.com) | office: 218-237-3333 | fax:218-237-3377

**Affinity**  
REAL ESTATE INC

**\$230,000**  
MLS 6481358 Lake Home  
23589 Great Ridge Trail  
Park Rapids MN 56470



website: [www.AffinityRealEstate.com](http://www.AffinityRealEstate.com) | email: [info@affinityrealestate.com](mailto:info@affinityrealestate.com) | office: 218-237-3333 | fax: 218-237-3377



**\$230,000**  
 MLS 6481358 Lake Home  
 23589 Great Ridge Trail  
 Park Rapids MN 56470