



MLS 6481424 Lake Land

**\$29,900**

**Description:**

Enjoy access on Height of Land Lake with this mostly wooded 1.3 acre lot and 167 feet of nice shoreline! Located only 15 miles from Detroit Lakes and 25 miles from Park Rapids. Height of Land Lake is a wonderful fishing, waterfowl hunting, swimming, and all around fun lake! This property features lots of trees, wildlife, and plenty of room. (There is a large amount of low land/marsh between the road and lakeshore).

**Additional Details:**

Lot Acres	1.3
Lot Dimensions	167x465x167x510
School District	23
Taxes	\$442
Taxes with Assessments	\$442
Tax Year	2024

**Additional Features:**

**Driving Directions:**

From Detroit Lakes go East on State Hwy 34 for 14.5 miles, turn left and head north on E HOL Dr for 1 mile to the property on the left side. From Park Rapids go West on 34 approx. 25 miles turn right and head north on E HOL Dr for 1 mile.



Listed By:  
Counselor Realty of Detroit Lakes

Affinity Real Estate Inc. participates in the Regional Multiple Listing Service of Minnesota, Inc Broker Reciprocity (sm) program, allowing us to display other broker's listings on our website. All properties are subject to prior sale, change or withdrawal.



**Call Affinity Real Estate**

**218-237-3333**

**[info@affinityrealestate.com](mailto:info@affinityrealestate.com)**



**Affinity Real Estate - 600 Park Avenue South - Park Rapids MN 56470**





website: [www.AffinityRealEstate.com](http://www.AffinityRealEstate.com) | email: [info@affinityrealestate.com](mailto:info@affinityrealestate.com) | office: 218-237-3333 | fax: 218-237-3377



**\$29,900**

MLS 6481424 Lake Land  
XXX E Height Of Land Dr  
Detroit Lakes MN 56501





website: [www.AffinityRealEstate.com](http://www.AffinityRealEstate.com) | email: [info@affinityrealestate.com](mailto:info@affinityrealestate.com) | office: 218-237-3333 | fax: 218-237-3377



**\$29,900**

MLS 6481424 Lake Land  
XXX E Height Of Land Dr  
Detroit Lakes MN 56501





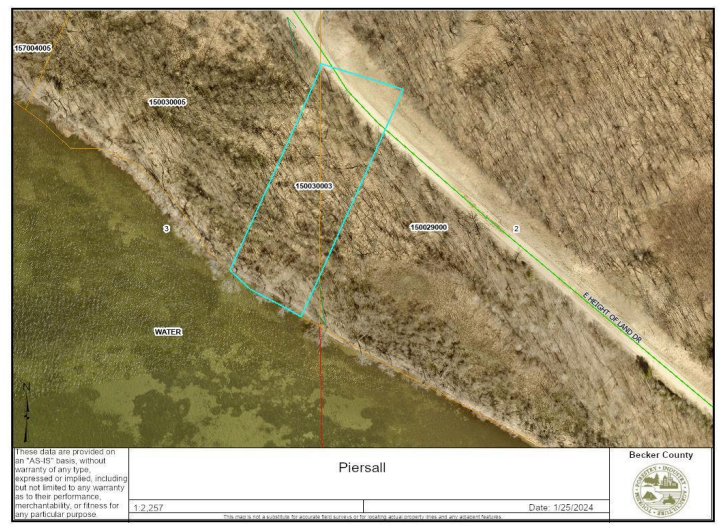
website: [www.AffinityRealEstate.com](http://www.AffinityRealEstate.com) | email: [info@affinityrealestate.com](mailto:info@affinityrealestate.com) | office: 218-237-3333 | fax: 218-237-3377



**\$29,900**

MLS 6481424 Lake Land  
XXX E Height Of Land Dr  
Detroit Lakes MN 56501





website: [www.AffinityRealEstate.com](http://www.AffinityRealEstate.com) | email: [info@affinityrealestate.com](mailto:info@affinityrealestate.com) | office: 218-237-3333 | fax: 218-237-3377



**\$29,900**  
MLS 6481424 Lake Land  
XXX E Height Of Land Dr  
Detroit Lakes MN 56501