



MLS 6482382 Residential

**\$224,900**

1,986 sq ft  
4 bedrooms  
3 baths

2003 Park Avenue  
Bemidji MN 56601

Status: Pending

**Description:**

This practical and efficient 4BR/3BA residence is a perfect blend of convenience & potential. Situated in a fantastic location close to restaurants, banks, shopping, medical facilities, and schools, this property offers a lifestyle of ease and accessibility. The primary suite provides a private 3/4 bath, and the possibility of a fifth bedroom in the basement adds flexibility to the floor plan. Enjoy the luxury of two living areas, providing ample room for relaxation and entertainment. The layout is ideal for rental or owner preference. The three-season porch extends your living space. Laundry facilities on both the main level and basement. The main floor features a well-equipped kitchen. The basement, set up for a second kitchen, opens up many possibilities. The large garage provides secure parking, ample storage space for tools, equipment, and more. Off-street parking ensures convenience for friends and family.

**Additional Details:**

Year Built	1960
Lot Acres	0.3
Lot Dimensions	100x130
Garage Stalls	2
School District	31
Taxes	\$2,226
Taxes with Assessments	\$2,226
Tax Year	2023

**Additional Features:**

**Basement:** Block, Egress Window(s), Finished, Full, Partially Finished, Storage Space **Fuel:** Natural Gas **Garage:** 2 **Heat:** Forced Air **Sewer:** City Sewer/Connected **Water:** City Water/Connected **Air Conditioning:** Central Air

**Driving Directions:**

North on Irvine Ave, left on 20th St, home on corner of 20th St and Park Ave.



Listed By:  
CENTURY 21 Dickinson Realtors

Affinity Real Estate Inc. participates in the Regional Multiple Listing Service of Minnesota, Inc Broker Reciprocity (sm) program, allowing us to display other broker's listings on our website. All properties are subject to prior sale, change or withdrawal.



Call Affinity Real Estate

**218-237-3333**

[info@affinityrealestate.com](mailto:info@affinityrealestate.com)



Affinity Real Estate - 600 Park Avenue South - Park Rapids MN 56470





website: [www.AffinityRealEstate.com](http://www.AffinityRealEstate.com) | email: [info@affinityrealestate.com](mailto:info@affinityrealestate.com) | office: 218-237-3333 | fax: 218-237-3377



**\$224,900**  
MLS 6482382 Residential  
2003 Park Avenue  
Bemidji MN 56601





website: [www.AffinityRealEstate.com](http://www.AffinityRealEstate.com) | email: [info@affinityrealestate.com](mailto:info@affinityrealestate.com) | office: 218-237-3333 | fax: 218-237-3377



**\$224,900**  
 MLS 6482382 Residential  
 2003 Park Avenue  
 Bemidji MN 56601





website: [www.AffinityRealEstate.com](http://www.AffinityRealEstate.com) | email: [info@affinityrealestate.com](mailto:info@affinityrealestate.com) | office: 218-237-3333 | fax: 218-237-3377



**\$224,900**  
MLS 6482382 Residential  
2003 Park Avenue  
Bemidji MN 56601



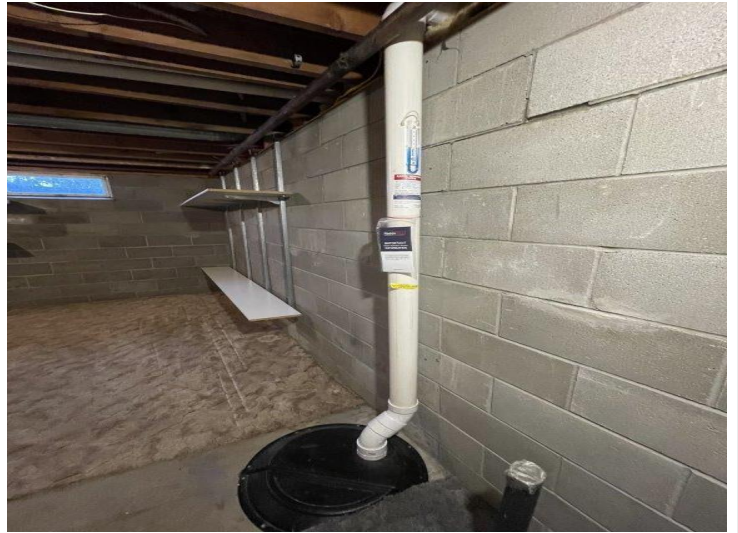


website: [www.AffinityRealEstate.com](http://www.AffinityRealEstate.com) | email: [info@affinityrealestate.com](mailto:info@affinityrealestate.com) | office: 218-237-3333 | fax: 218-237-3377



**\$224,900**  
MLS 6482382 Residential  
2003 Park Avenue  
Bemidji MN 56601





website: [www.AffinityRealEstate.com](http://www.AffinityRealEstate.com) | email: [info@affinityrealestate.com](mailto:info@affinityrealestate.com) | office: 218-237-3333 | fax: 218-237-3377



**\$224,900**  
MLS 6482382 Residential  
2003 Park Avenue  
Bemidji MN 56601





website: [www.AffinityRealEstate.com](http://www.AffinityRealEstate.com) | email: [info@affinityrealestate.com](mailto:info@affinityrealestate.com) | office: 218-237-3333 | fax: 218-237-3377



**\$224,900**  
MLS 6482382 Residential  
2003 Park Avenue  
Bemidji MN 56601