



MLS 6482481 Residential

\$230,000

1,771 sq ft
3 bedrooms
2 baths

616 8th Street
Park Rapids MN 56470

Status: Pending

Description:

This 3 bed, 2 bath twinhome in Park Rapids is move-in ready. The location puts it a short distance to parks, Park Rapids historic downtown, the hospital and many local attractions. The upper level of the home features a primary bedroom with a walk-closet, open living space, stainless steel appliances, fresh paint and a newly stained deck to your fenced in backyard. The lower level features 2 more bedrooms, laundry room and another living room. Finished off with an attached garage this is a fantastic home in a great location. Come check it out for yourself!

Additional Details:

Year Built	2000
Lot Acres	0.22
Lot Dimensions	50x150
Garage Stalls	2
School District	309
Taxes	\$2,152
Taxes with Assessments	\$2,352
Tax Year	2023

Additional Features:

Basement: Daylight/Lookout Windows, Finished, Full, Wood **Fuel:** Natural Gas **Garage:** 2 **Heat:** Forced Air **Sewer:** City Sewer/Connected
Water: City Water/Connected **Air Conditioning:** Central Air

Driving Directions:

From 34/71 in Park Rapids, South on 71, right on 8th St. W to 616 8th St.



Listed By:
Keller Williams Realty Professionals

Affinity Real Estate Inc. participates in the Regional Multiple Listing Service of Minnesota, Inc Broker Reciprocity (sm) program, allowing us to display other broker's listings on our website. All properties are subject to prior sale, change or withdrawal.



Call Affinity Real Estate

218-237-3333

info@affinityrealestate.com



Affinity Real Estate - 600 Park Avenue South - Park Rapids MN 56470



website: www.AffinityRealEstate.com | email: info@affinityrealestate.com | office: 218-237-3333 | fax: 218-237-3377



\$230,000
 MLS 6482481 Residential
 616 8th Street
 Park Rapids MN 56470



website: www.AffinityRealEstate.com | email: info@affinityrealestate.com | office: 218-237-3333 | fax: 218-237-3377

Affinity
REAL ESTATE INC

\$230,000
MLS 6482481 Residential
616 8th Street
Park Rapids MN 56470



website: www.AffinityRealEstate.com | email: info@affinityrealestate.com | office: 218-237-3333 | fax: 218-237-3377

Affinity
REAL ESTATE INC

\$230,000
MLS 6482481 Residential
616 8th Street
Park Rapids MN 56470



website: www.AffinityRealEstate.com | email: info@affinityrealestate.com | office: 218-237-3333 | fax: 218-237-3377

Affinity
REAL ESTATE INC

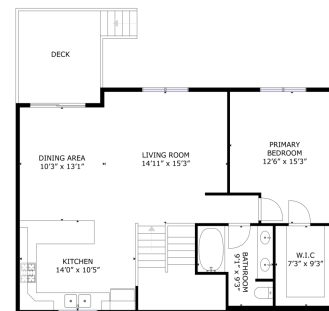
\$230,000
MLS 6482481 Residential
616 8th Street
Park Rapids MN 56470



website: www.AffinityRealEstate.com | email: info@affinityrealestate.com | office: 218-237-3333 | fax: 218-237-3377

Affinity
REAL ESTATE INC

\$230,000
MLS 6482481 Residential
616 8th Street
Park Rapids MN 56470



GROSS INTERNAL AREA
FLOOR 1: 788 sq.ft. FLOOR 2: 859 sq.ft.
EXCLUDED AREAS: GARAGE: 450 sq.ft.
TOTAL: 1,647 sq.ft.
(SQUARE FOOTAGE BASED ON APPROXIMATE MEASUREMENTS)

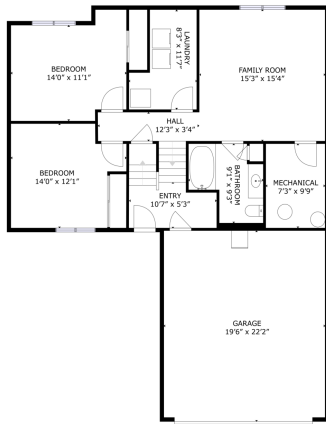
FLOOR 2

Matterport

website: www.AffinityRealEstate.com | email: info@affinityrealestate.com | office: 218-237-3333 | fax: 218-237-3377

Affinity
REAL ESTATE INC

\$230,000
MLS 6482481 Residential
616 8th Street
Park Rapids MN 56470



GROSS INTERNAL AREA
FLOOR 1: 788 sq.ft. FLOOR 2: 859 sq.ft.
EXCLUDED AREAS: GARAGE: 430 sq.ft.
TOTAL: 1647 sq.ft.
SIZES AND DIMENSIONS ARE APPROXIMATE. ACTUAL MAY VARY.



website: www.AffinityRealEstate.com | email: info@affinityrealestate.com | office: 218-237-3333 | fax: 218-237-3377



\$230,000
MLS 6482481 Residential
616 8th Street
Park Rapids MN 56470