



MLS 6482832 Residential

\$197,500

1,696 sq ft
4 bedrooms
2 baths

422 2nd Street
Wadena MN 56482

Status: Pending

Description:

Home is renovated with 4 bedrooms, formal dining, living room, spacious kitchen, and new flooring, roof, windows and heating and cooling. Ready to move in! This home has a lot of charm, and just steps from the elementary School. Front and Back deck, lots of charm and character is just waiting for you to move in! It sets on a corner large in SW Wadena and has a detached 2 car garage.

Additional Details:

Year Built	1900
Lot Acres	0.17
Lot Dimensions	100 x 73
Garage Stalls	2
School District	2155
Taxes	\$958
Taxes with Assessments	\$958
Tax Year	2023

Additional Features:

Basement: Partial **Fuel:** Propane **Garage:** 2 **Heat:** Forced Air **Sewer:** City Sewer/Connected **Water:** City Water/Connected **Air Conditioning:** Central Air

Driving Directions:

From the Elementary school head Southwest to the property on Left.



Listed By:
Central MN Realty LLC

Affinity Real Estate Inc. participates in the Regional Multiple Listing Service of Minnesota, Inc Broker Reciprocity (sm) program, allowing us to display other broker's listings on our website. All properties are subject to prior sale, change or withdrawal.



Call Affinity Real Estate

218-237-3333

info@affinityrealestate.com



Affinity Real Estate - 600 Park Avenue South - Park Rapids MN 56470



website: www.AffinityRealEstate.com | email: info@affinityrealestate.com | office: 218-237-3333 | fax: 218-237-3377



\$197,500
 MLS 6482832 Residential
 422 2nd Street
 Wadena MN 56482



website: www.AffinityRealEstate.com | email: info@affinityrealestate.com | office: 218-237-3333 | fax: 218-237-3377



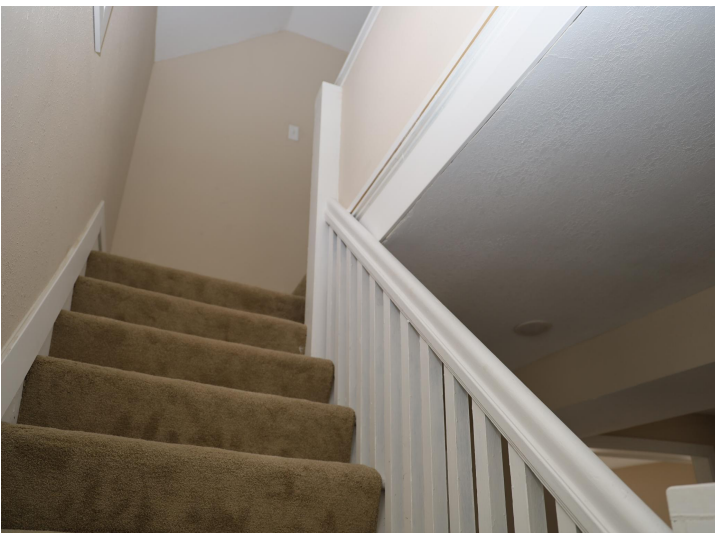
\$197,500
MLS 6482832 Residential
422 2nd Street
Wadena MN 56482



website: www.AffinityRealEstate.com | email: info@affinityrealestate.com | office: 218-237-3333 | fax: 218-237-3377



\$197,500
MLS 6482832 Residential
422 2nd Street
Wadena MN 56482



website: www.AffinityRealEstate.com | email: info@affinityrealestate.com | office: 218-237-3333 | fax: 218-237-3377



\$197,500
MLS 6482832 Residential
422 2nd Street
Wadena MN 56482



website: www.AffinityRealEstate.com | email: info@affinityrealestate.com | office: 218-237-3333 | fax: 218-237-3377



\$197,500
MLS 6482832 Residential
422 2nd Street
Wadena MN 56482



website: www.AffinityRealEstate.com | email: info@affinityrealestate.com | office: 218-237-3333 | fax: 218-237-3377



\$197,500
MLS 6482832 Residential
422 2nd Street
Wadena MN 56482



website: www.AffinityRealEstate.com | email: info@affinityrealestate.com | office: 218-237-3333 | fax: 218-237-3377



\$197,500
 MLS 6482832 Residential
 422 2nd Street
 Wadena MN 56482