



MLS 6482942 Land

\$119,900

4.7 Acres
Site Plan Approved

XXX CR-15
Pine River MN 56474

Status: Active

Description:

Opportunity knocks on this fantastic lot close to it all! The Whitefish Chain is calling your name – come enjoy the ease of access. Only 2 miles to the closest public boat launch, 5 miles to Pequot Lakes, 11 miles to Nisswa, and more within a stone's throw. Backing up to the DNR marshland, you will have beautiful views and privacy forever. Open to any builder – time to call this home!

Additional Details:

Lot Acres	4.7
Lot Dimensions	irregular
School District	186
Taxes	\$284
Taxes with Assessments	\$284
Tax Year	2023

Additional Features:

Driving Directions:

MN 371 to Jenkins, R onto CR-15, at CR-15 and Silver Sands Rd intersection.



Listed By:
Edina Realty, Inc.

Affinity Real Estate Inc. participates in the Regional Multiple Listing Service of Minnesota, Inc Broker Reciprocity (sm) program, allowing us to display other broker's listings on our website. All properties are subject to prior sale, change or withdrawal.



Call Affinity Real Estate

218-237-3333

info@affinityrealestate.com



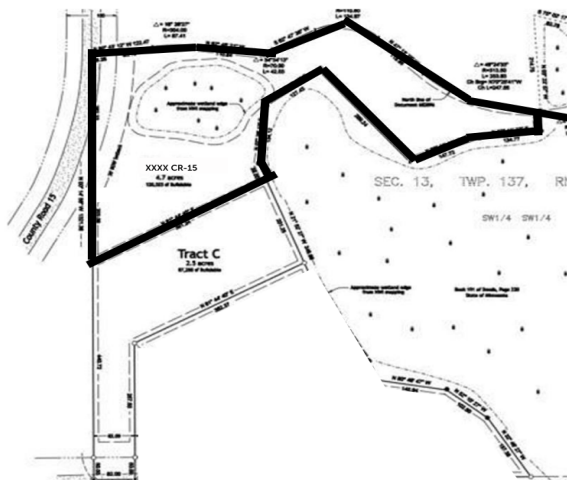
Affinity Real Estate - 600 Park Avenue South - Park Rapids MN 56470



website: www.AffinityRealEstate.com | email: info@affinityrealestate.com | office: 218-237-3333 | fax: 218-237-3377



\$119,900
MLS 6482942 Land
XXX CR-15
Pine River MN 56474



website: www.AffinityRealEstate.com | email: info@affinityrealestate.com | office: 218-237-3333 | fax: 218-237-3377



\$119,900
 MLS 6482942 Land
 XXX CR-15
 Pine River MN 56474