



MLS 6482971 Land

\$70,000

2.5 Acres
Site Plan Approved

XXX Silver Sands Road
Pine River MN 56474

Status: Active

Description:

Opportunity knocks on this fantastic lot close to it all! The Whitefish chain is calling your name – come enjoy the ease of access. Only 2 miles to the closest public boat launch, 5 miles to Pequot Lakes, 11 miles to Nisswa, and more within a stone’s throw. Backing up to the DNR marshland, you will have beautiful views and privacy forever. Open to any builder – time to call this home!

Additional Details:

| | |
|------------------------|-----------|
| Lot Acres | 2.5 |
| Lot Dimensions | irregular |
| School District | 186 |
| Taxes | \$284 |
| Taxes with Assessments | \$284 |
| Tax Year | 2023 |

Additional Features:

Driving Directions:

MN 371 to CR-15, R on Silver Sands Road (intersection with CR-15)



Listed By:
Edina Realty, Inc.

Affinity Real Estate Inc. participates in the Regional Multiple Listing Service of Minnesota, Inc Broker Reciprocity (sm) program, allowing us to display other broker’s listings on our website. All properties are subject to prior sale, change or withdrawal.



Call Affinity Real Estate

218-237-3333

info@affinityrealestate.com



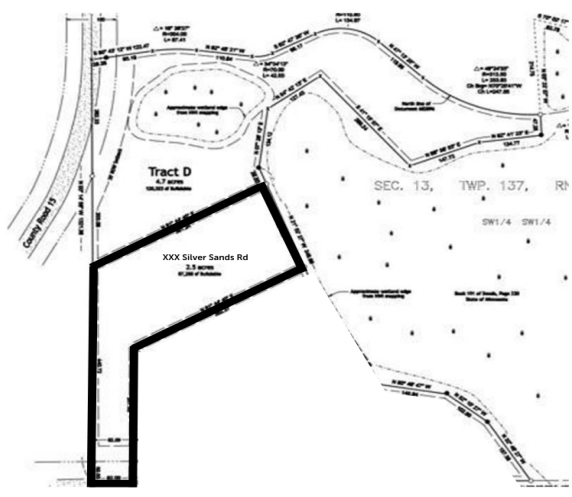
Affinity Real Estate - 600 Park Avenue South - Park Rapids MN 56470



website: www.AffinityRealEstate.com | email: info@affinityrealestate.com | office: 218-237-3333 | fax:218-237-3377

Affinity
REAL ESTATE INC

\$70,000
MLS 6482971 Land
XXX Silver Sands Road
Pine River MN 56474



website: www.AffinityRealEstate.com | email: info@affinityrealestate.com | office: 218-237-3333 | fax:218-237-3377



\$70,000
MLS 6482971 Land
XXX Silver Sands Road
Pine River MN 56474