



MLS 6483698 Land

**\$34,000**

5 Acres  
Raw Land

TBD 221st Avenue  
Bagley MN 56621

Status: Active

**Description:**

Great wooded lot located just southeast of Bagley on all paved roads with quick access to Highway 2. Additional 5 acres available, see listing #6483938.

**Additional Details:**

Lot Acres	5
Lot Dimensions	662.5x334
School District	162
Taxes	\$1
Taxes with Assessments	\$1
Tax Year	2023

**Additional Features:**

**Driving Directions:**

Hwy 2 West west of Shevlin, left on 221st Ave, property will be on the left just before Walkerbrook Dr.



Listed By:  
Realty Experts, LLC

Affinity Real Estate Inc. participates in the Regional Multiple Listing Service of Minnesota, Inc Broker Reciprocity (sm) program, allowing us to display other broker's listings on our website. All properties are subject to prior sale, change or withdrawal.



**Call Affinity Real Estate**

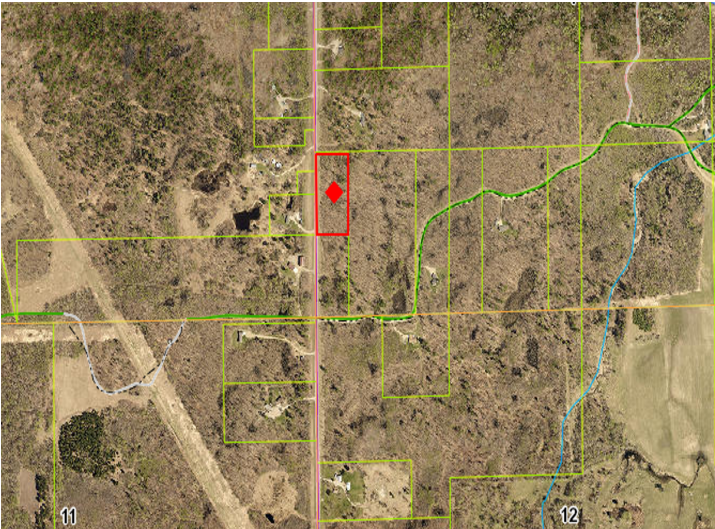
**218-237-3333**

**info@affinityrealestate.com**



**Affinity Real Estate - 600 Park Avenue South - Park Rapids MN 56470**





website: [www.AffinityRealEstate.com](http://www.AffinityRealEstate.com) | email: [info@affinityrealestate.com](mailto:info@affinityrealestate.com) | office: 218-237-3333 | fax: 218-237-3377



**\$34,000**  
 MLS 6483698 Land  
 TBD 221st Avenue  
 Bagley MN 56621