



MLS 6484217 Land

\$35,000

0.24 Acres
Subdivided

Lot #11 Lidstrom Road
Detroit Lakes MN 56501

Status: Active

Description:

Always wanted a place to keep your boat, water toys, ATV's, or seasonal items? Maybe you're looking for your own man cave or she shed. These Toy Box Addition open lots are waiting for you to build your personally designed shed. Conveniently, they are located in the Floyd Lake area & have access to electricity, water, & septic. Call today for more details!

Additional Details:

Lot Acres	0.24
Lot Dimensions	70x120
School District	22
Taxes	\$200
Taxes with Assessments	\$220
Tax Year	2023

Additional Features:

Driving Directions:

From DL take 21 north 2 miles property is on the west side marked with signs.



Listed By:
HomeSmart Adventure Realty

Affinity Real Estate Inc. participates in the Regional Multiple Listing Service of Minnesota, Inc Broker Reciprocity (sm) program, allowing us to display other broker's listings on our website. All properties are subject to prior sale, change or withdrawal.



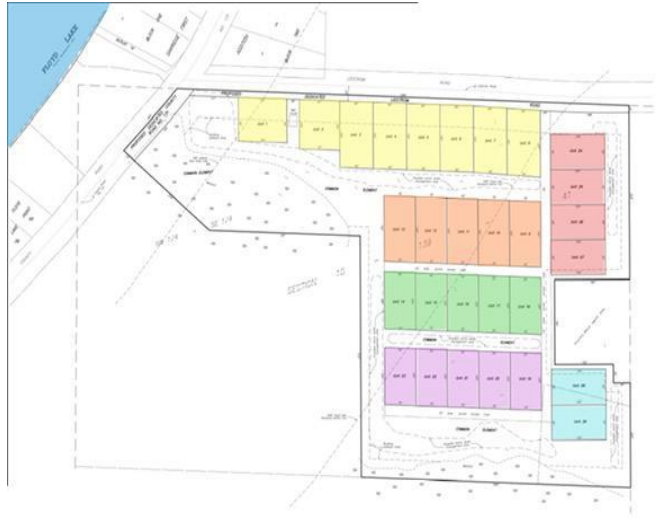
Call Affinity Real Estate

218-237-3333

info@affinityrealestate.com



Affinity Real Estate - 600 Park Avenue South - Park Rapids MN 56470



website: www.AffinityRealEstate.com | email: info@affinityrealestate.com | office: 218-237-3333 | fax:218-237-3377



\$35,000
MLS 6484217 Land
Lot #11 Lidstrom Road
Detroit Lakes MN 56501