



MLS 6484238 Land

**\$35,000**

0.22 Acres  
Subdivided

Lot #26 Lidstrom Road  
Detroit Lakes MN 56501

Status: Active

**Description:**

Always wanted a place to keep your boat, water toys, ATV's, or seasonal items? Maybe you're looking for your own man cave or she shed. These Toy Box Addition open lots are waiting for you to build your personally designed shed. Conveniently, they are located in the Floyd Lake area & have access to electricity, water, & septic. Call today for more details!

**Additional Details:**

Lot Acres	0.22
Lot Dimensions	70x120
School District	22
Taxes	\$200
Taxes with Assessments	\$220
Tax Year	2023

**Additional Features:**

**Driving Directions:**

From DL take 21 north 2 miles. Property is on the west side of road marked with signs.



Listed By:  
HomeSmart Adventure Realty

Affinity Real Estate Inc. participates in the Regional Multiple Listing Service of Minnesota, Inc Broker Reciprocity (sm) program, allowing us to display other broker's listings on our website. All properties are subject to prior sale, change or withdrawal.



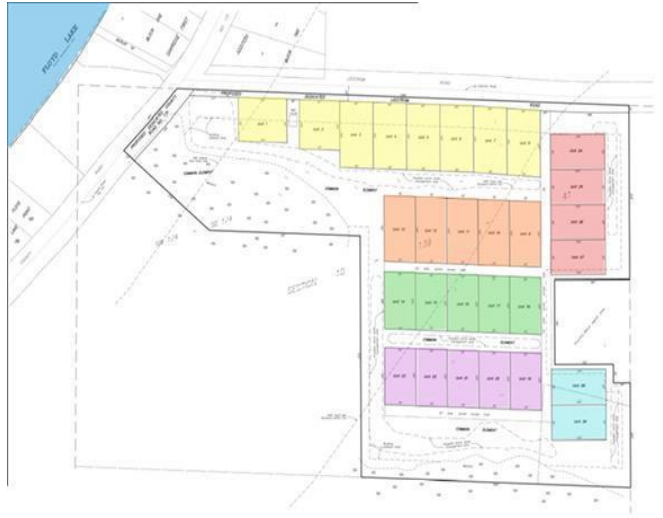
**Call Affinity Real Estate**

**218-237-3333**

**info@affinityrealestate.com**



**Affinity Real Estate - 600 Park Avenue South - Park Rapids MN 56470**



website: [www.AffinityRealEstate.com](http://www.AffinityRealEstate.com) | email: [info@affinityrealestate.com](mailto:info@affinityrealestate.com) | office: 218-237-3333 | fax:218-237-3377



**\$35,000**  
MLS 6484238 Land  
Lot #26 Lidstrom Road  
Detroit Lakes MN 56501