



MLS 6484260 Land

**\$35,000**

0.21 Acres  
Subdivided

Lot #20 Lidstrom Road  
Detroit Lakes MN 56501

Status: Active

**Description:**

Always wanted a place to keep your boat, water toys, ATV's, or seasonal items? Maybe you're looking for your own man cave or she shed. These Toy Box Addition open lots are waiting for you to build your personally designed shed. Conveniently, they are located in the Floyd Lake area & have access to electricity, water, & septic. Call today for more details!

**Additional Details:**

Lot Acres	0.21
Lot Dimensions	70*120
School District	22
Taxes	\$206
Taxes with Assessments	\$226
Tax Year	2023

**Additional Features:**

**Driving Directions:**

From Detroit Lakes, take Co Hwy 21 North to Lindstrom Road - take left to head west. Property is marked with sign on your left.



Listed By:  
HomeSmart Adventure Realty

Affinity Real Estate Inc. participates in the Regional Multiple Listing Service of Minnesota, Inc Broker Reciprocity (sm) program, allowing us to display other broker's listings on our website. All properties are subject to prior sale, change or withdrawal.



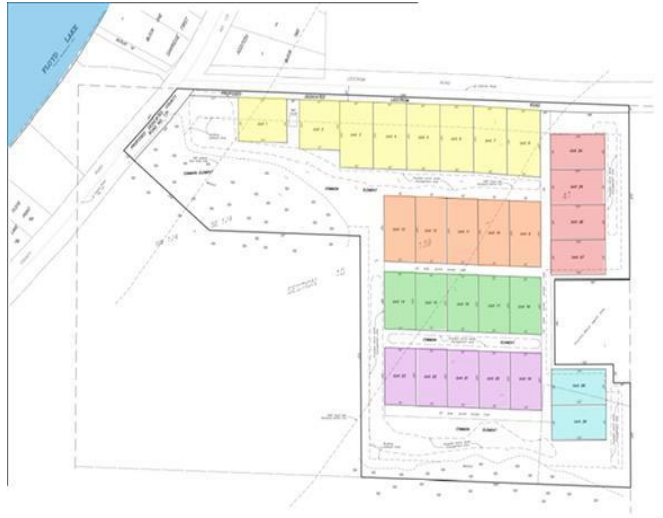
Call Affinity Real Estate

**218-237-3333**

[info@affinityrealestate.com](mailto:info@affinityrealestate.com)



Affinity Real Estate - 600 Park Avenue South - Park Rapids MN 56470



website: [www.AffinityRealEstate.com](http://www.AffinityRealEstate.com) | email: [info@affinityrealestate.com](mailto:info@affinityrealestate.com) | office: 218-237-3333 | fax:218-237-3377



**\$35,000**  
MLS 6484260 Land  
Lot #20 Lidstrom Road  
Detroit Lakes MN 56501