



MLS 6485106 Residential

**\$474,900**

2,811 sq ft  
4 bedrooms  
4 baths

54044 Gillian Street  
Osage MN 56570

Status: Active

#### Description:

This Osage country home features over 2800 sq ft and a massive 32' x 64' dream shop all set on 4+ acres. The home features 4 bedrooms, 3 bathrooms with plenty of space for entertaining and an attached garage. Enjoy the addition to the home that features a living room, fireplace and wet bar. The main level of the house contains 3 bedrooms, an open kitchen and dining area. The basement has 1 more bedroom, large family room, kitchenette and sauna. This property also features an incredible shop complete with kitchen, bathroom, living area and a finished loft above on one side. The other side is setup to park an RV with electric hookup and a 14' x 14' garage door or to be used for storage/workshop space. Enjoy this shop in comfort with in-floor heat and a ductless mini-split. The outdoor setup features a fireplace area with concrete walkways and retaining walls. Set on 4+ acres near Osage and surrounded by trails this is a property you won't want to miss.

#### Additional Details:

Year Built	2003
Lot Acres	4.34
Lot Dimensions	500x400
Garage Stalls	2
School District	309
Taxes	\$2,696
Taxes with Assessments	\$2,816
Tax Year	2023

#### Additional Features:

**Basement:** Daylight/Lookout Windows, Egress Window(s), Finished, Full, Insulating Concrete Forms, Concrete **Fuel:** Electric, Propane, Wood  
**Garage:** 2 **Heat:** Ductless Mini-Split, Forced Air, Fireplace(s), Radiant Floor **Sewer:** Tank with Drainage Field **Water:** Submersible - 4 Inch, Drilled  
**Air Conditioning:** Central Air, Ductless Mini-Split

#### Driving Directions:

From Hwys. 71/34 in Park Rapids. West on Hwy 34. Left on Hwy 47, follow South for 1 mile on Hwy 47. Left on Gillian St. to property on left. #54044



Listed By:  
Keller Williams Realty Professionals

Affinity Real Estate Inc. participates in the Regional Multiple Listing Service of Minnesota, Inc Broker Reciprocity (sm) program, allowing us to display other broker's listings on our website. All properties are subject to prior sale, change or withdrawal.



Call Affinity Real Estate

**218-237-3333**

[info@affinityrealestate.com](mailto:info@affinityrealestate.com)



Affinity Real Estate - 600 Park Avenue South - Park Rapids MN 56470





website: [www.AffinityRealEstate.com](http://www.AffinityRealEstate.com) | email: [info@affinityrealestate.com](mailto:info@affinityrealestate.com) | office: 218-237-3333 | fax: 218-237-3377



**\$474,900**  
 MLS 6485106 Residential  
 54044 Gillian Street  
 Osage MN 56570





website: [www.AffinityRealEstate.com](http://www.AffinityRealEstate.com) | email: [info@affinityrealestate.com](mailto:info@affinityrealestate.com) | office: 218-237-3333 | fax: 218-237-3377

**Affinity**  
REAL ESTATE INC

**\$474,900**  
MLS 6485106 Residential  
54044 Gillian Street  
Osage MN 56570





website: [www.AffinityRealEstate.com](http://www.AffinityRealEstate.com) | email: [info@affinityrealestate.com](mailto:info@affinityrealestate.com) | office: 218-237-3333 | fax: 218-237-3377

**Affinity**  
REAL ESTATE INC

**\$474,900**  
MLS 6485106 Residential  
54044 Gillian Street  
Osage MN 56570





website: [www.AffinityRealEstate.com](http://www.AffinityRealEstate.com) | email: [info@affinityrealestate.com](mailto:info@affinityrealestate.com) | office: 218-237-3333 | fax: 218-237-3377

**Affinity**  
REAL ESTATE INC

**\$474,900**  
MLS 6485106 Residential  
54044 Gillian Street  
Osage MN 56570





website: [www.AffinityRealEstate.com](http://www.AffinityRealEstate.com) | email: [info@affinityrealestate.com](mailto:info@affinityrealestate.com) | office: 218-237-3333 | fax: 218-237-3377

**Affinity**  
REAL ESTATE INC

**\$474,900**  
MLS 6485106 Residential  
54044 Gillian Street  
Osage MN 56570





website: [www.AffinityRealEstate.com](http://www.AffinityRealEstate.com) | email: [info@affinityrealestate.com](mailto:info@affinityrealestate.com) | office: 218-237-3333 | fax: 218-237-3377



**\$474,900**  
MLS 6485106 Residential  
54044 Gillian Street  
Osage MN 56570



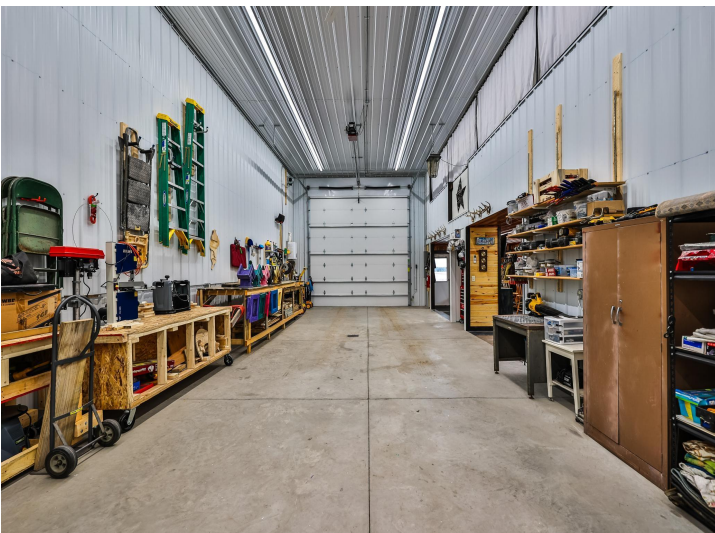


website: [www.AffinityRealEstate.com](http://www.AffinityRealEstate.com) | email: [info@affinityrealestate.com](mailto:info@affinityrealestate.com) | office: 218-237-3333 | fax: 218-237-3377



**\$474,900**  
 MLS 6485106 Residential  
 54044 Gillian Street  
 Osage MN 56570





website: [www.AffinityRealEstate.com](http://www.AffinityRealEstate.com) | email: [info@affinityrealestate.com](mailto:info@affinityrealestate.com) | office: 218-237-3333 | fax: 218-237-3377

**Affinity**  
REAL ESTATE INC

**\$474,900**  
MLS 6485106 Residential  
54044 Gillian Street  
Osage MN 56570





website: [www.AffinityRealEstate.com](http://www.AffinityRealEstate.com) | email: [info@affinityrealestate.com](mailto:info@affinityrealestate.com) | office: 218-237-3333 | fax: 218-237-3377

**Affinity**  
REAL ESTATE INC

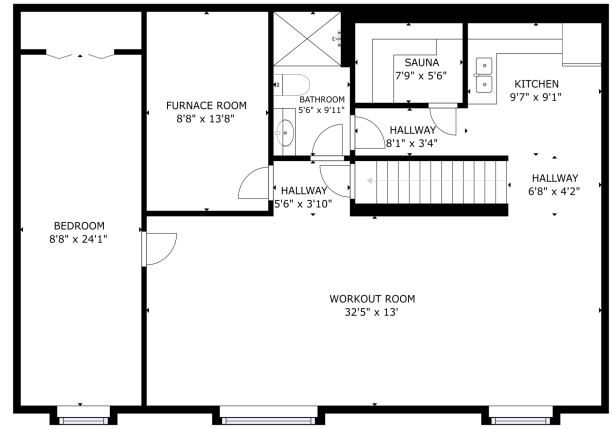
**\$474,900**  
MLS 6485106 Residential  
54044 Gillian Street  
Osage MN 56570





GRAND TOTAL AREA  
FLOOR 1: 12,000 SQ. FT. (12,000 SQ. FT. TOTAL)  
GARAGE: 100 SQ. FT. (100 SQ. FT. TOTAL)  
TOTAL: 12,100 SQ. FT.

Matterport



GRAND TOTAL AREA  
FLOOR 1: 12,000 SQ. FT. (12,000 SQ. FT. TOTAL)  
GARAGE: 100 SQ. FT. (100 SQ. FT. TOTAL)  
TOTAL: 12,100 SQ. FT.

Matterport

website: [www.AffinityRealEstate.com](http://www.AffinityRealEstate.com) | email: [info@affinityrealestate.com](mailto:info@affinityrealestate.com) | office: 218-237-3333 | fax: 218-237-3377



**\$474,900**  
MLS 6485106 Residential  
54044 Gillian Street  
Osage MN 56570